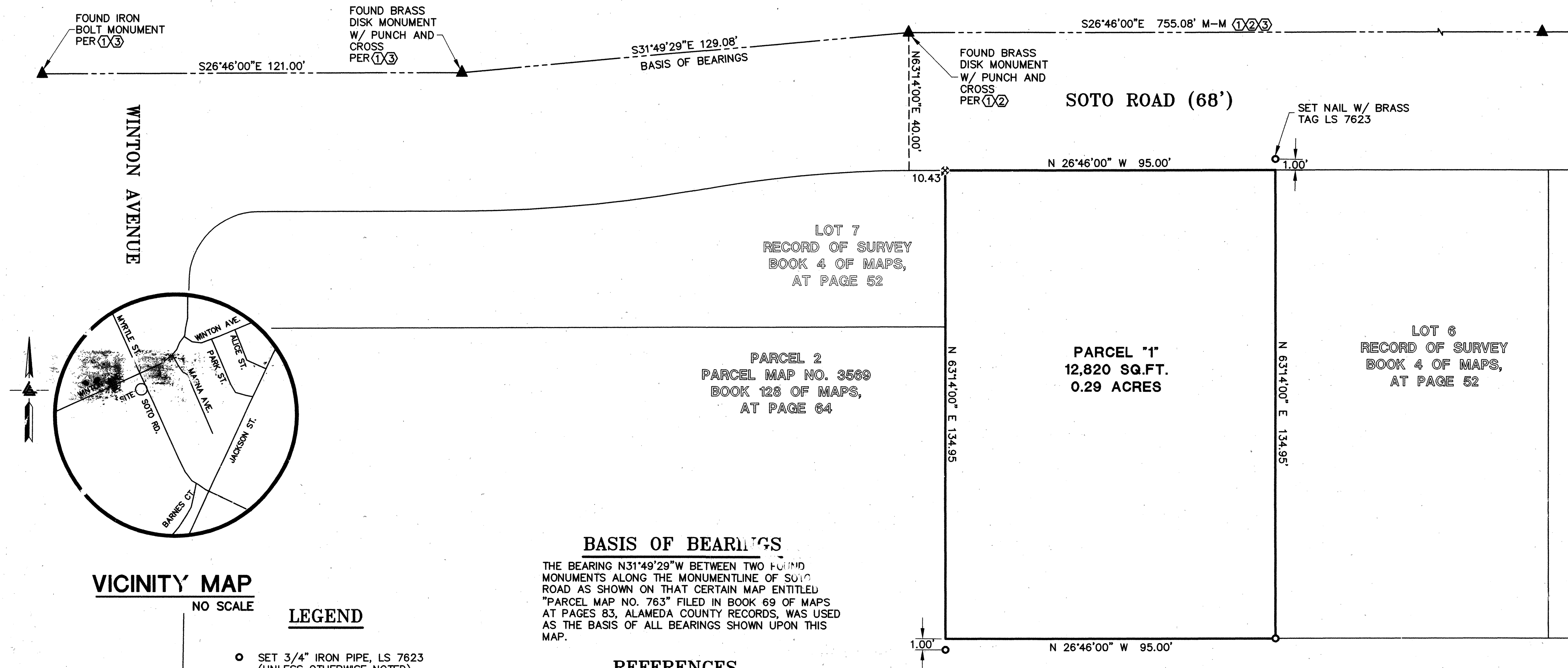


PG 96

MAP BK 3/D

9604

PARCEL MAP



BASIS OF BEARINGS

THE BEARING N31°49'29"W BETWEEN TWO FOUND MONUMENTS ALONG THE MONUMENTLINE OF SOTO ROAD AS SHOWN ON THAT CERTAIN MAP ENTITLED "PARCEL MAP NO. 763" FILED IN BOOK 69 OF MAPS AT PAGES 83, ALAMEDA COUNTY RECORDS, WAS USED AS THE BASIS OF ALL BEARINGS SHOWN UPON THIS MAP.

REFERENCES

- ① PARCEL MAP NO. 763
BOOK 69 OF MAPS, AT PAGE 83
- ② PARCEL MAP NO. 3569
BOOK 128 OF MAPS, AT PAGE 64
- ③ RECORD OF SURVEY
BOOK 4 OF MAPS, AT PAGE 52

LEGEND

- SET 3/4" IRON PIPE, LS 7623
(UNLESS OTHERWISE NOTED)
- ▲ FOUND MONUMENT AS NOTED
- ✱ FOUND CUT CROSS

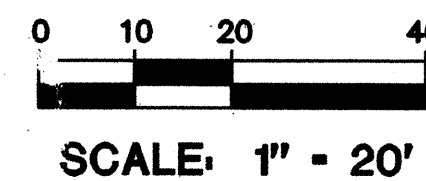
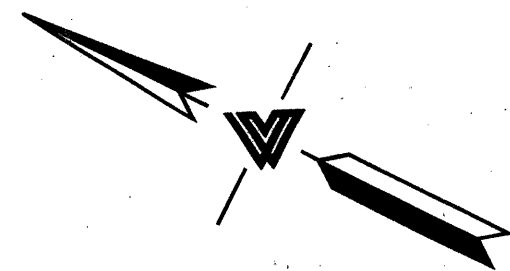
- EXTERIOR BOUNDARY LINE
- - - MONUMENT LINE
- RECORD BOUNDARY LINE

- P.S.D.E. PUBLIC STORM DRAIN EASEMENT
- P.U.E. PUBLIC UTILITY EASEMENT
- S.D.E. STORM DRAIN EASEMENT
- M-M MONUMENT - MONUMENT

- () RECORD BEARING OR DISTANCE IN DISCREPANCY WITH MEASURED

ALL DISTANCES ARE IN FEET AND DECIMALS

NOTE:
PARCEL "1" TO BE DEVELOPED WITH FOUR (4) CONDOMINIUM UNITS AND COMMON AREAS.



PARCEL MAP 9604 FOR CONDOMINIUM PURPOSES (4 UNITS)

BEING A SUBDIVISION OF THE LANDS OF BANDALI & HOLDT
AS DESCRIBED IN
DOCUMENT NUMBERS 2004427935
ALAMEDA COUNTY RECORDS.

CITY OF HAYWARD ALAMEDA COUNTY CALIFORNIA
SCALE 1"=20' OCTOBER 2008



LEA & BRAZE ENGINEERING, INC.

CIVIL ENGINEERS • LAND SURVEYORS

2495 INDUSTRIAL PARKWAY WEST
HAYWARD, CALIFORNIA 94545
(510) 887-4086
FAX (510) 887-3019
WWW.LEABRAZE.COM