

PARCEL MAP No. 32-52

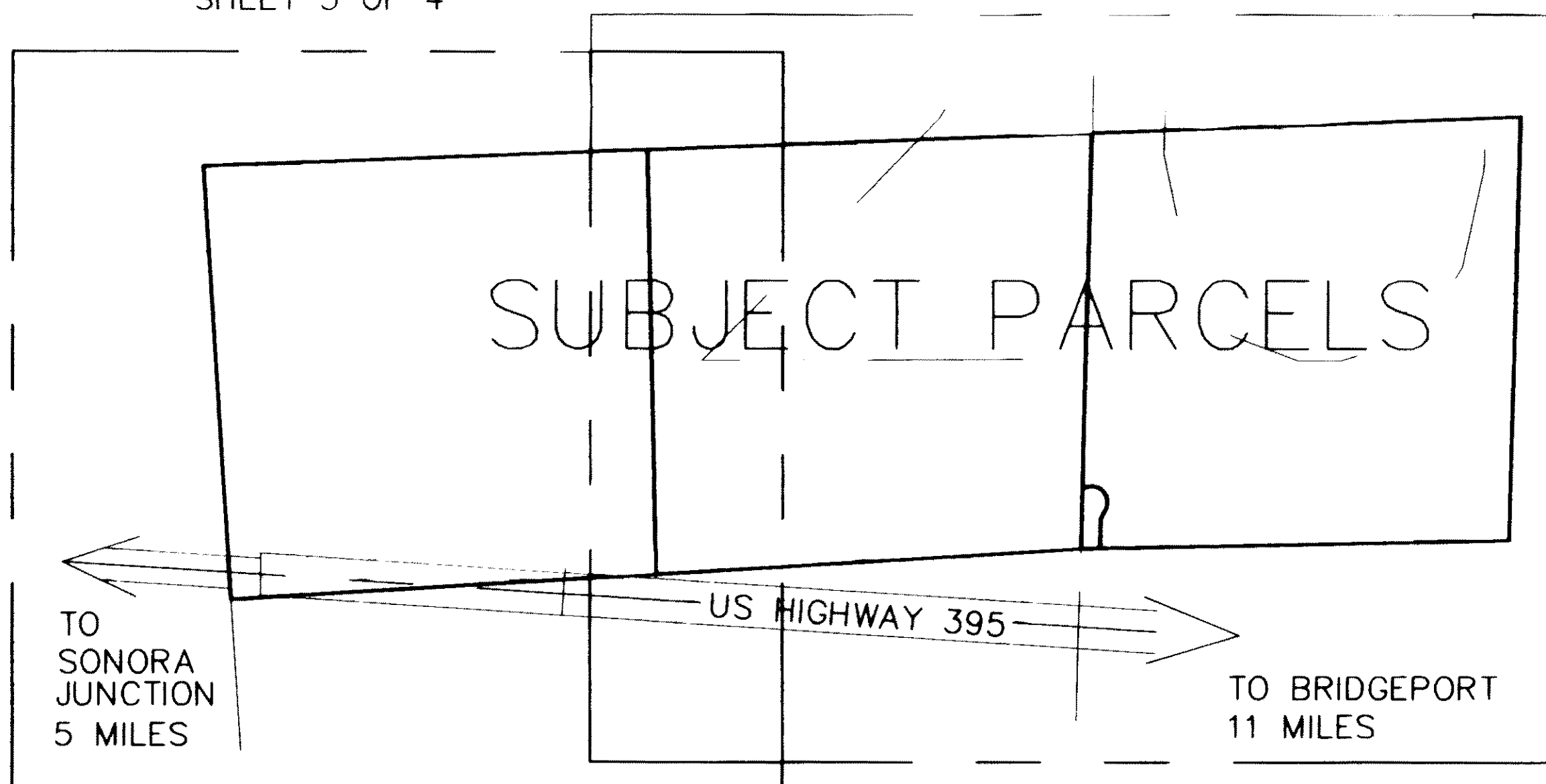
SHEET 2 OF 4

A DIVISION OF A PORTION OF SEC 20, T6N, R24E,
MDB&M, MONO COUNTY, CALIFORNIA



SCALE: 1"=400'

SHEET 3 OF 4



SHEET 4 OF 4

VICINITY MAP

BASIS OF BEARINGS:

NORTH, AS DETERMINED BY A SOLAR OBSERVATION TAKEN IN S24, T6N, R23E, MDB&M
ON JULY 9, 1983 AND JULY 15, 1983.

ALIQUOT CORNERS ESTABLISHED PER RSMB 1/98 ARE ACCEPTED AS NOTED HEREON.

PM Bk 4 p. 106A