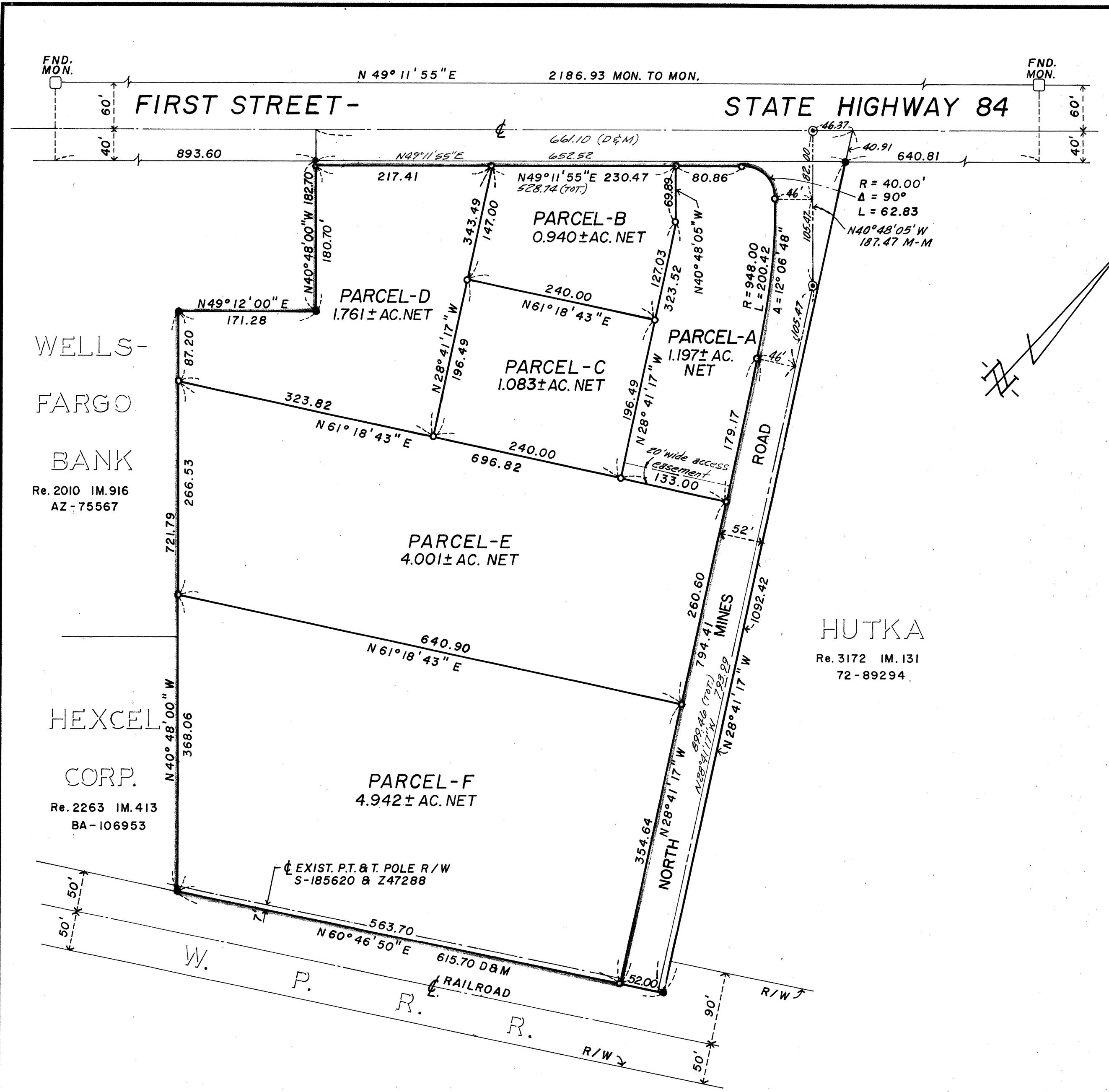


- LEGEND**
- = IRON PIPE FOUND
 - = SET 1" IRON PIPE-TAG L.S. 3344
 - = C.H.C. MONUMENT FOUND
 - D & M = DEED & MEASURE
 - ⊙ = SET CITY MONUMENT



13- 69171

WELLS-
FARGO
BANK
Re. 2010 IM.916
AZ-75567

HUTKA
Re. 3172 IM.131
72-89294

HEXCEL
CORP.
Re. 2263 IM.413
BA-106953

ASSOCIATED PROFESSIONS INC.
ENGINEERS · ARCHITECTS · SURVEYORS · PLANNERS
LIVERMORE CALIFORNIA
SCALE: 1"=100'
OCTOBER 1972

PARCEL MAP 1019
OF A PORTION OF
PARCEL 1 ON PARCEL MAP 966,
FILED OCTOBER 18, 1972
BK. 76 O.R. PG. 44
CITY OF LIVERMORE
ALAMEDA COUNTY
CALIFORNIA

SURVEYOR'S CERTIFICATE

This map was prepared by me or under my direction and is based upon a field survey in conformance with the requirements of the Subdivision Map Act at the request of ED HUTKA on 10/18/1972. I hereby certify that all provisions applicable to State Law & Local Ordinances have been complied with.

Edward M. King L.S. 3344

CITY ENGINEERS CERTIFICATE

This map has been examined this 14TH day of May, 1973 for conformance with the requirements of Section 11575 of the Subdivision Map Act.

Daniel J. Lee
City Engineer

By Deputy: _____

RECORDER'S CERTIFICATE

Filed this 21ST day of May, 1973 at 1:25 p.m. in Book 79 of Parcel Maps at page 38 at the request of Associated Professions, Inc.

JACK G. BLUE
County Recorder

By Deputy: _____

BASIS OF BEARING

The Northwestern line of State Highway 84 between found Monuments taken as N 49° 11' 55" E