

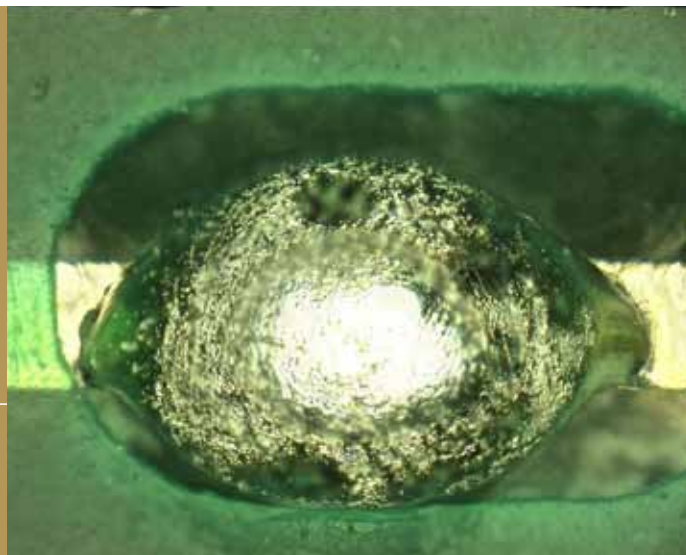


Test Probes · Test Fixtures



Bead Probe Contacting

Best contacting reliability



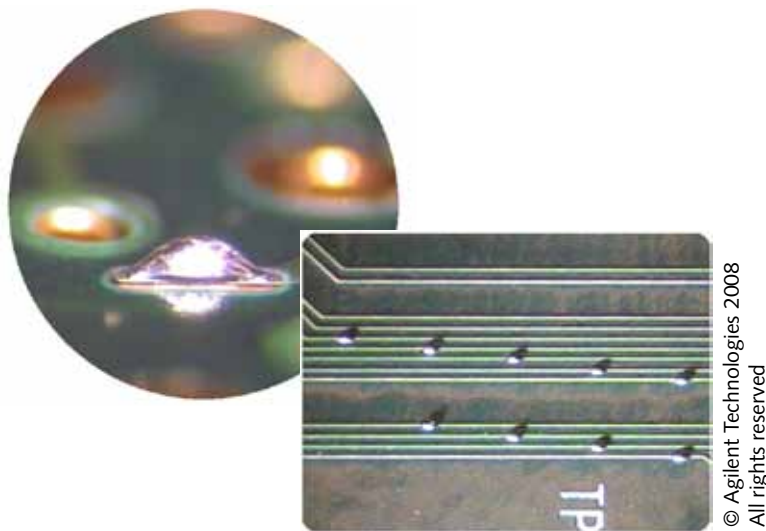
Bead Probe Technology

INGUN: The matching tip style for your bead

For bead probe technology - where small beads of solder are directly applied onto conductors or onto μ -vias - INGUN has developed special tip styles in close cooperation with global customers to be able to provide the ideal solution for the applicable bead.

Experience has shown that there are numerous different bead geometries, compositions and surfaces, which need to be contacted. For this reason, apart from the flat tip style (02), which was designed for contacting solder-resin-free and/or small beads, the fine-serrated tip (60) is also available. The fine, aggressive points of the tip style 60 enable reliable penetration of the surface of those beads that are suitably large enough and are covered with flux deposits. Due to the small distance/pitch between the individual points of the tip style 60, contacting of the beads is guaranteed without hitting/touching the solder-resin-lacquer.

The INGUN bead probes are 100% compatible with the standard series GKS-050/075/100/135/550. Therefore all the related receptacles and tools of these series can be used without exception.



Comment from a leading manufacturer in the field of consumer electronics on the subject of the INGUN tip style 60 when contacting „hard“ bead probe solder:

„I never got a PC board to pass contact-test with the flat style probes, whereas the PC board with the serrated style probes (2.0 N) passed contact-test on serveral PC boards. I never had this happen before.“

ICT Development Engineer, USA

Bead Probe Technology

INGUN recommendations for tip styles

INGUN offers tip styles with a number of variants for bead probe contacting, i.e. the flat tip style 02 with various tip diameters as well as the fine-serrated tip style 60 with various tip diameters and serrated tip pitches from 0,15 to 0,25 mm.


The **tip style 02** – flat tip – is preferably used for flux-free and/or small beads.



Tip Style 02		Series				
		050	075	100	135	550
Tip-Ø	Ø 0,60 mm	x				x
	Ø 0,90 mm		x	x	x	
	Ø 1,50 mm			x		

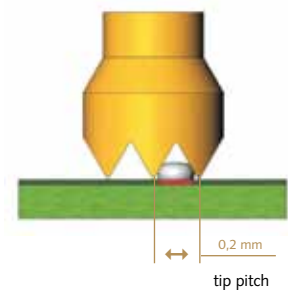
x = standard tip styles

The **tip style 60** – fine-serrated – is recommended for beads, which are bad to contact due to flux deposits and suitably large enough beads. Decisive for the choice of the tip style is the matching up of the tip pitch in relation to the size of the bead.



Tip Style 60				Series				
				050	075	100	135	550
Tip-Ø	Ø 0,50 mm	Tip Pitches	0,15 mm	x				x
	Ø 0,60 mm		0,20 mm	x				x
	Ø 0,64 mm		0,20 mm		x	x		
	Ø 0,90 mm		0,20 mm		x	x	x	
	Ø 0,90 mm		0,25 mm	x				x

x = standard tip styles

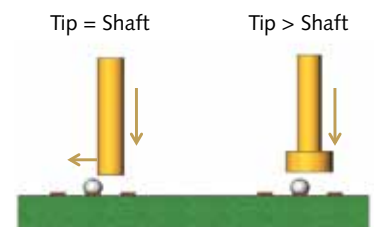


INGUN recommendations for the geometry of the tip style

Tip styles with **tip diameter = shaft diameter** are suitable both for test fixture customizing with a guide plate as well as in the case of beads that need to be contacted close to components and subsequent damage of the components must be avoided. Tip styles with **tip diameter > shaft diameter**, however, are to be recommended for test fixture customizing without a guide plate and/or for larger PC board and test fixture tolerances, e.g. when contacting from the top-side. The larger tip diameter ensures reliable contacting of the beads and subsequently reduces the risk of the bead being sheared off when contacted sidewise.

Recommended Tip Style and Tip Geometry		Tip Style 02		Tip Style 60	
		tip = shaft	tip > shaft	tip = shaft	tip > shaft
Applications	small beads (< 0,15 mm)	+	+	-	-
	large beads (> 0,15 mm)	o	o	+	+
	close to components	+	-	+	-
	test fixture with guide plate	+	-	+	-
	large tolerances on PC board	-	+	-	+
	large tolerances on test fixture	-	+	-	+

+ = good / o = middle / - = bad



The problem of beads being sheared off

Bead Probe Technology

INGUN recommendation for spring forces

The choice of the ideal spring force in combination with the tip style, which has already been chosen, is dependent on the composition of the beads (i.e. contamination / solder hardness) and the intended deformation of the bead. Spring forces from 1,0 N to 3,0 N are available – which are chosen depending on the composition of the beads.

Choice of spring force and tip style depending on the type of contamination and flux deposits:

Recommended Tip Style		Tip Style 02	Tip Style 60
		contamination	contamination
Spring Forces	1,0 N	1	1
	1,5 N	1	1
	2,0 N	1	1 / 2
	2,8 N	1	1 / 2 / 3
	3,0 N	1	1 / 2 / 3

Examples:

No contamination / flux deposits:
Soft, fluid-type flux deposits:
Hard, wax-type flux deposits:

Contamination 1 (good)
Contamination 2 (middle)
Contamination 3 (bad)

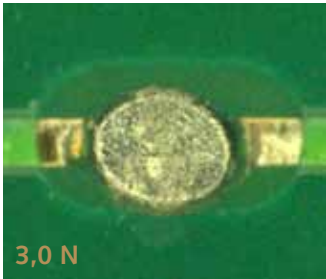
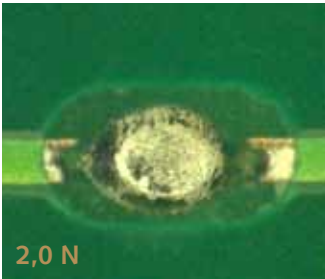
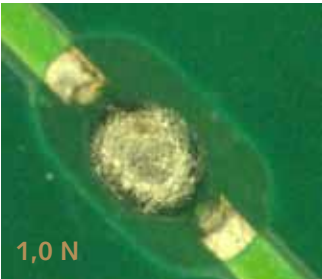
Choice of spring force and tip style depending on the hardness of the solder:

Recommended Tip Style and Spring Force		Tip Style 02	Tip Style 60
		solder	solder
Spring Forces	1,0 N	1	1
	1,5 N	1 / 2	1 / 2
	2,0 N	2	2 / 3
	2,8 N	-	3
	3,0 N	-	3

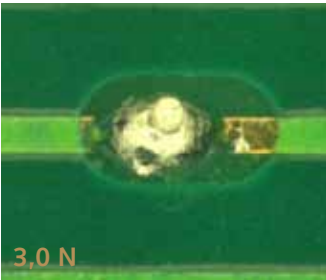
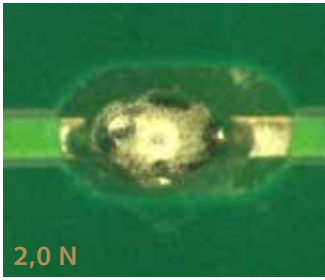
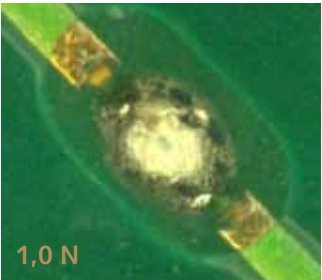
Examples:

Sn 63 = 12.8 HV:
SAC 305 = 17.7 HV:
Innotot = 33.6 HV:

Hardness 1 (soft)
Hardness 2 (middle)
Hardness 3 (hard)



Example: Contacting SAC solder with **tip style 02** and various spring forces



Example: Contacting SAC solder with **tip style 60** and various spring forces

Bead Probe Technology

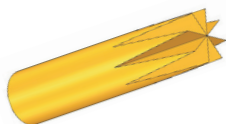
NEW

Tip Style 79 - Star

The 1st Bead Probe Tip Style with self-cleaning function

INGUN Recommendations for Tip Styles

The **tip style 79 - Star** - is recommended (due to the self-cleaning, horizontal arrangement of the knife-type edges) for „elongated/small“ and „large“ beads with flux deposits, that can stick to the tip. Decisive for the choice of the tip style # 79 is the matching up of the bead geometry and the angle of the knife-shaped edges as well as the most suitable contacting area.



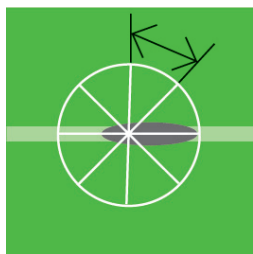
Tip Style 79		Series			
		050	075	100	550
Tip-Ø	Ø 0,50 mm	x			x
	Ø 0,64 mm		x	x	
	Ø 0,90 mm			x	

ingun®
innovation

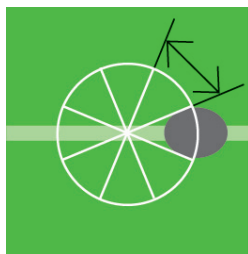
Available Tip Style GKS-050			
Material	Tip Style	Versions	Plating
3	79	 Ø 0,50 (.020)	A

Available Tip Styles GKS-075			
Material	Tip Style	Versions	Plating
3	79	 Ø 0,64 (.025)	A

Available Tip Styles GKS-100			
Material	Tip Style	Versions	Plating
3	79	 Ø 0,64 (.025)	A
3	79	 Ø 0,90 (.035)	A



Good matching up of contacting area and length of bead



Poor matching up of contacting area and angle of knife-edges too large for length of bead.

INGUN Recommendations for Spring Forces

The choice of the ideal spring force in combination with the tip style, which has already been chosen, is dependent on the composition of the beads (i.e. contamination / solder hardness) and the intended deformation of the bead. Spring forces from 1,0 N to 3,0 N are available - which are chosen depending on the composition of the beads.

Choice of spring force depending on the type of contamination and flux deposits:

Recommended Spring Force		Tip Style 79
		contamination
Spring Forces	1,0 N	1
	1,5 N	1 / 2
	2,0 N	1 / 2
	2,8 N	1 / 2 / 3
	3,0 N	1 / 2 / 3

Examples:

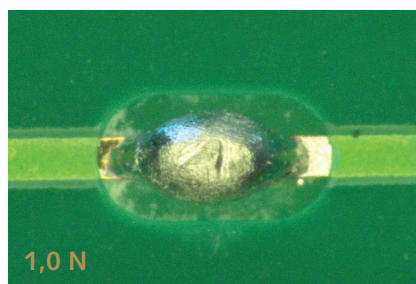
No contamination / flux deposits: Contamination 1 (good)
Soft, fluid-type flux deposits: Contamination 2 (middle)
Hard, wax-type flux deposits: Contamination 3 (bad)

Choice of spring force depending on the hardness of the solder:

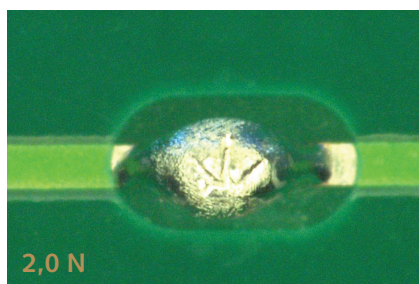
Recommended Spring Force		Tip Style 79
		solder
Spring Forces	1,0 N	1
	1,5 N	1 / 2
	2,0 N	2 / 3
	2,8 N	3
	3,0 N	3

Examples:

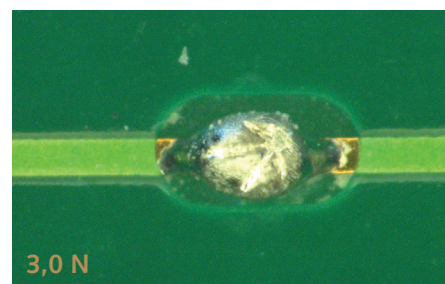
Sn 63 = 12.8 HV: Hardness 1 (soft)
SAC 305 = 17.7 HV: Hardness 2 (middle)
Innot = 33.6 HV: Hardness 3 (hard)



1,0 N



2,0 N



3,0 N

Example: Contacting SAC-solder with **tip style 79** and various spring forces

Bead Probe Technology

NEW

Tip Style 79 - Star

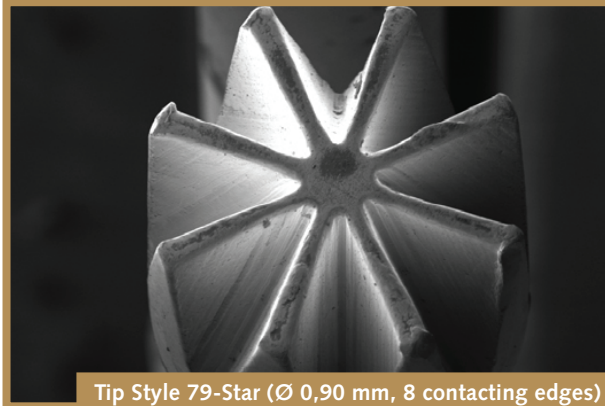
The 1st Bead Probe Tip Style
with self-cleaning function

Customer Production Test Results:

GKS 075 379 090 A 2000

Soldering Paste Type 2 / PCB Surface 1

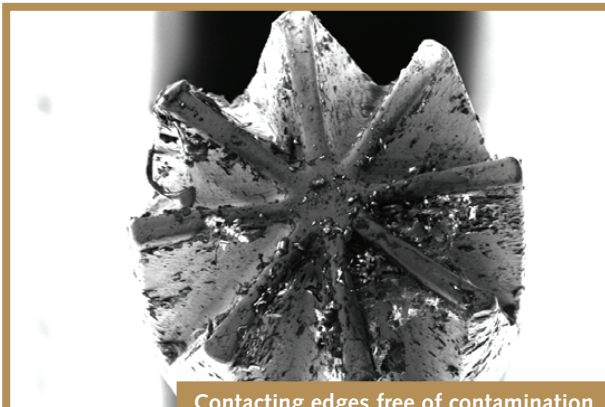
- Maximum test probe durability
- Highest level of contacting reliability
- Optimum process stability



Tip Style 79-Star (Ø 0,90 mm, 8 contacting edges)
Number of contacts: 0



Contacting edges free of contamination
Number of contacts: 12.000



Contacting edges free of contamination
Number of contacts: 72.000



No contamination at the contact zone
Number of contacts: 84.000



Good selfcleaning function with tip style 79
Number of contacts: 200.000



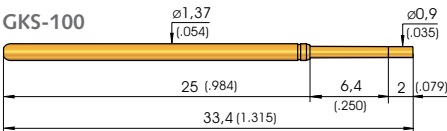
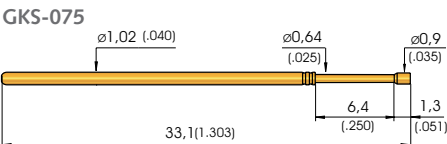
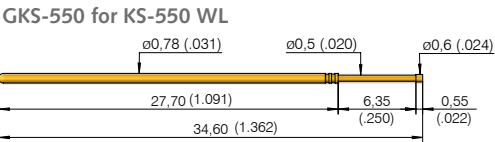
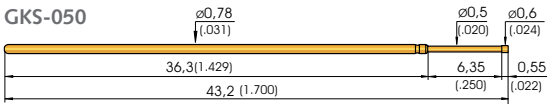
Very little wear recognizable on the tip style 79
Number of contacts: 200.000 (cleaned)

GKS 050/075/100/135/550

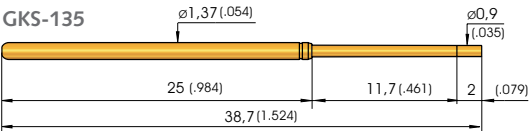
Test Probes for Bead Probe Contacting

Grid:
≥ 1,27 / 1,91 / 2,54 mm
≥ 50 / 75 / 100 Mil

ICT-/FCT test probes



Long-stroke test probe for dual-stage test fixtures



Available Tip Styles GKS-050/550			
Material	Tip Style	Ø (inch)	Plating
3	02	Ø 0,60 (.024)	A
3	60	Ø 0,50 (.020)	A

Available Tip Styles GKS-050/550			
Material	Tip Style	Ø (inch)	Plating
3	60	Ø 0,60 (.024)	A
3	60	Ø 0,90 (.035)	A
3	79	Ø 0,50 (.020)	A

Available Tip Styles GKS-075			
Material	Tip Style	Ø (inch)	Plating
3	02	Ø 0,90 (.035)	A
3	60	Ø 0,64 (.025)	A

Available Tip Styles GKS-075			
Material	Tip Style	Ø (inch)	Plating
3	60	Ø 0,90 (.035)	A
3	79	Ø 0,64 (.025)	A

Available Tip Styles GKS-100			
Material	Tip Style	Ø (inch)	Plating
3	02	Ø 0,90 (.035)	A
3	02	Ø 1,50 (.060)	A
3	60	Ø 0,64 (.025)	A

Available Tip Styles GKS-100			
Material	Tip Style	Ø (inch)	Plating
3	60	Ø 0,90 (.035)	A
3	79	Ø 0,64 (.025)	A
3	79	Ø 0,90 (.035)	A

Available Tip Styles GKS-135			
Material	Tip Style	Ø (inch)	Plating
3	02	Ø 0,90 (.035)	A
3	60	Ø 0,90 (.035)	A

Mechanical Data

Work. stroke 050/075/100/550: 4,3 mm (.169)
Max. stroke 050/075/100/550: 6,35 mm (.250)
Work. stroke GKS-135: 9,3 mm (.366)
Max. stroke GKS-135: 11,35 mm (.448)
Spring force of GKS-050/550:
Spring force at work. stroke: 1,5 N (5.4oz)
Alternative: 1,0 N (3.6oz); 2,0 N (7.2oz) (not for GKS-550)
Spring force of GKS-075:
Spring force at work. stroke: 1,5 N (5.4oz)
Alternative: 1,0 N (3.6oz); 2,0 N (7.2oz)
2,8 N (10.1oz)

Materials

Plunger: BeCu, gold-plated
Barrel: nickel-silver or bronze, gold-plated
Spring: steel, gold-plated
Receptacle: nickel-silver or brass, gold-plated
Spring force of GKS-100:
Spring force at work. stroke: 1,5 N (3.6oz)
Alternative: 2,0 N (7.2oz); 3,0 N (10.8oz)
Spring force of GKS-135:
Spring force at work. stroke: 1,5 N (5.4oz)
Alternative: 2,0 N (7.2oz); 3,0 N (10.8oz)

Operating Temperature

Standard: -40° up to +80° C

Note:
Collar height and installation height, receptacles, electrical data, mounting hole size: see compatible standard probe series in our latest Test Probe Catalogue.

Tools:
Insertion and extraction tools for GKS and KS see page 118 in our latest Test Probe Catalogue.

Ordering Example

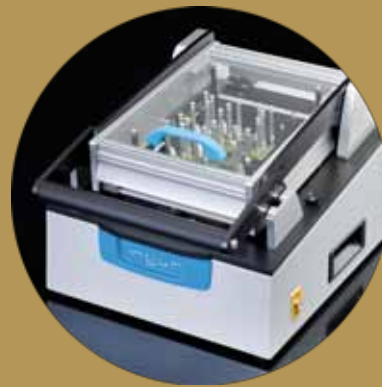
Test Probes:

Series	Tip Material 3 = BeCu	Tip Style	Tip Diameter (1/100 mm)	Plating A = Gold N = Nickel	Spring Force (dN)	Collar Height (mm)
G K S	0 5 0	3	6 0	0 6 0	A	1 5
G K S	5 5 0	3	6 0	0 6 0	A	1 5
G K S	0 7 5	3	6 0	0 9 0	A	2 0
G K S	1 0 0	3	6 0	0 9 0	A	2 0
G K S	1 3 5	3	6 0	0 9 0	A	2 0

All specifications are subject to change without prior notification



Test Probes
and
Test Fixtures
by
INGUN



Headquarters

INGUN Germany

Subsidiaries

INGUN Benelux
INGUN China
INGUN India
INGUN Korea
INGUN Mexico
INGUN España
INGUN Switzerland
INGUN UK
INGUN USA

Europe

Austria
Benelux
Bosnia-Herzegovina
Croatia
Czech Republic
Denmark
Estonia
Finland
France
Germany
Hungary
Italy
Norway
Poland
Portugal
Romania
Serbia
Slovenia
Slovak Republic
Spain
Sweden
Switzerland
Turkey
United Kingdom

Asia

China
Hong Kong
India
Japan
Korea
Malaysia
Taiwan
Thailand
Vietnam

Africa

South Africa
Tunisia

Australia

Australia
New Zealand

America

Argentina
Brazil
Canada
Mexico
USA

The addresses of the
international agencies
can be found under
www.ingun.com

ingun®

INGUN Prüfmittelbau GmbH

Max-Stromeyer-Straße 162

78467 Konstanz

Germany

Tel. +49 7531 8105-0

Fax +49 7531 8105-65

info@ingun.com

www.ingun.com