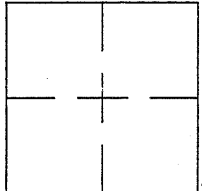


CORNER RECORD

Document Number CR 5711

City of OAKLAND County of ALAMEDA, California

Brief Legal Description IRON PIN MONUMENT LOCATED WITHIN SKYLINE BOULEVARD. (13NE5 BM)



CORNER RECORD

COORDINATES
(Optional)

Government Corner ☐ Control ☒
Meander ☐ Property ☐
Rancho ☐ Other ☐
Date of Survey 05/15/13

N. _____
E. _____
Zone _____ Datum _____
Elev. _____

Corner — Left as found ☒ Found and tagged ☐ Established ☐ Reestablished ☐ Rebuilt ☐

Identification and type of corner found: Evidence used to identify or procedure used to establish or reestablish the corner:
FOUND IRON PIN MONUMENT LOCATED WITHIN SKYLINE BOULEVARD.

AS SHOWN ON CITY OF OAKLAND MONUMENT MAP, PAGE 194.

THIS POINT WAS REFERENCED PRIOR TO A CONSTRUCTION PROJECT IN THE VICINITY.

A description of the physical condition of the monument as found and as set or reset: _____
FOUND AND SET POINTS AS SHOWN ON PAGE 2.

THESE TIES ARE FOR THE PURPOSE OF PERPETUATING THE FOUND MONUMENTATION.

NO CLAIM IS MADE AS TO THE RELATIONSHIP OF THE POINTS OR LINES SHOWN HEREON TO TRUE BOUNDARY LOCATIONS.

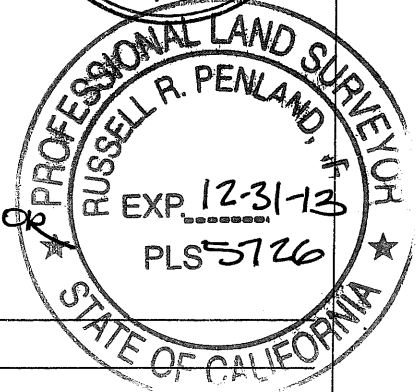
SURVEYOR'S STATEMENT

This Corner Record was prepared by me or under my direction in conformance with the Land Surveyors' Act on JUNE 14, 20 13.
Signed Vincent H. Cunha L.S. Number LS 4520
VINCENT H. CUNHA



COUNTY SURVEYOR'S STATEMENT

This Corner Record was received 6-26-13 and examined
and filed 8-1-2013
Signed Russell R. Penland Title COUNTY SURVEYOR



County Surveyor's Comment _____

SCALE: 1"=30'

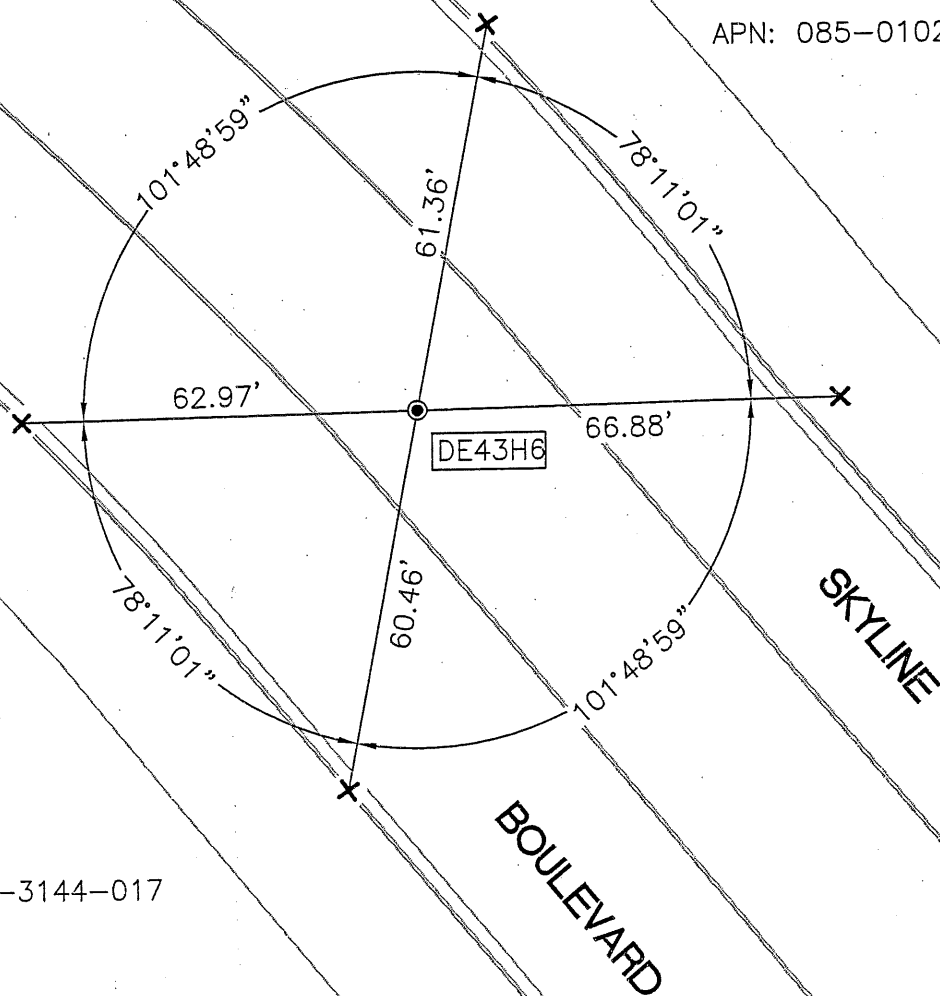
LEGEND

● FOUND IRON PIN IN MONUMENT WELL (13NE5 BM)

✕ SET CUT CROSS IN CONCRETE

AA##A# ALAMEDA COUNTY MONUMENT ID

APN: 085-0102-015-01



APN: 037A-3144-017