

PARCEL MAP 4326

CITY OF PLEASANTON · ALAMEDA COUNTY · CALIFORNIA

CONSISTING OF 2 SHEETS

CREEGAN & D'ANGELO

CONSULTING ENGINEERS

FREMONT, CALIFORNIA 94536

AUGUST 1984

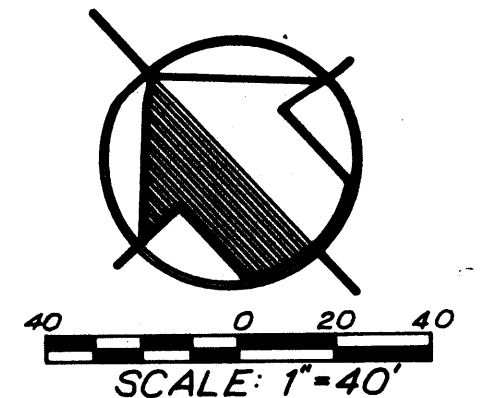
SCALE: 1" = 40'

BASIS OF BEARINGS:

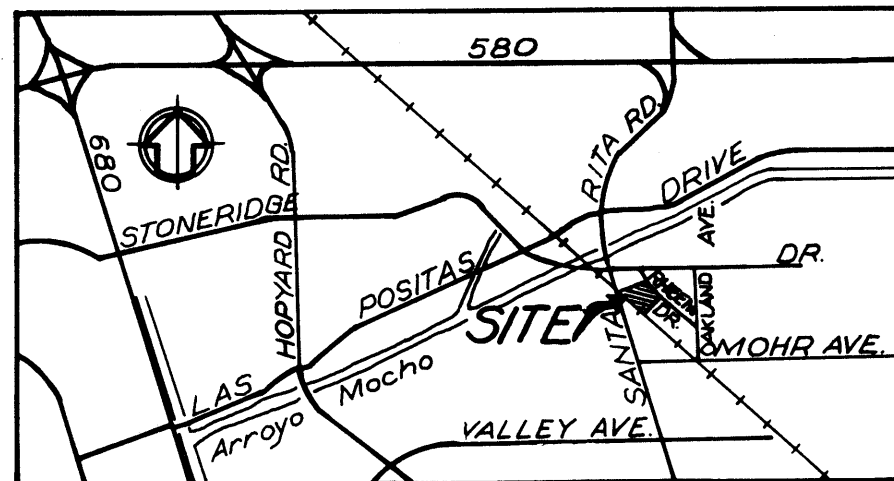
The bearing of N47°44'52"W along the centerline of Rheem Dr as shown on Tract Map 4863 recorded in Book 132 of Maps, Pages 29-32, was taken as the basis of bearing shown hereon.

LEGEND

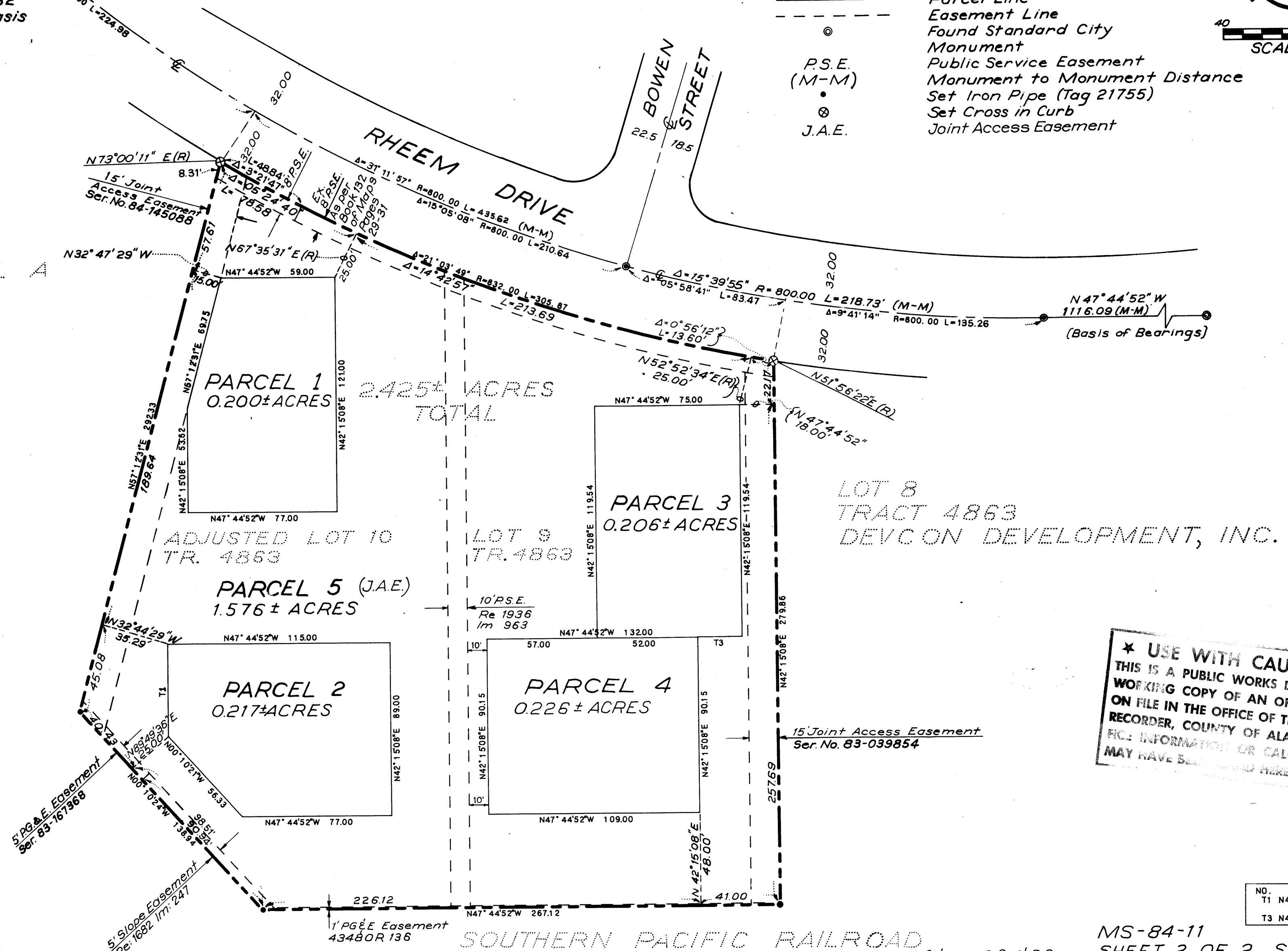
- Boundary Line
- Centerline
- Parcel Line
- Easement Line
- ⊙ Found Standard City Monument
- ⊙ Public Service Easement
- Monument to Monument Distance
- ⊙ Set Iron Pipe (Tag 21755)
- ⊙ Set Cross in Curb
- Joint Access Easement



ADJUSTED PARCEL A
PM 3653
SER. NO. 84-145088
FEB. 8, 1983
W.M. MACCHI



VICINITY MAP
NO SCALE



★ USE WITH CAUTION ★
THIS IS A PUBLIC WORKS DEPARTMENT
WORKING COPY OF AN OFFICIAL MAP
ON FILE IN THE OFFICE OF THE COUNTY
RECORDER, COUNTY OF ALAMEDA. OF-
FICIAL INFORMATION OR CALCULATIONS
MAY HAVE BEEN USED HEREON.

NO.	BEARING	DISTANCE
T1	N42°15'08"E	47.42
T3	N47°44'52"W	23.00

Job No. 384029-C DDP/SDF

SOUTHERN PACIFIC RAILROAD

MS-84-11
SHEET 2 OF 2 SHEETS

filed 12-26-84

149/73

MAP BK 149 PG 73

EC/641 P M 4326