

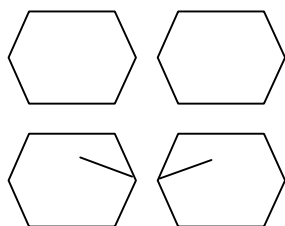


FLATHEADS Series 5 - Chest Burster

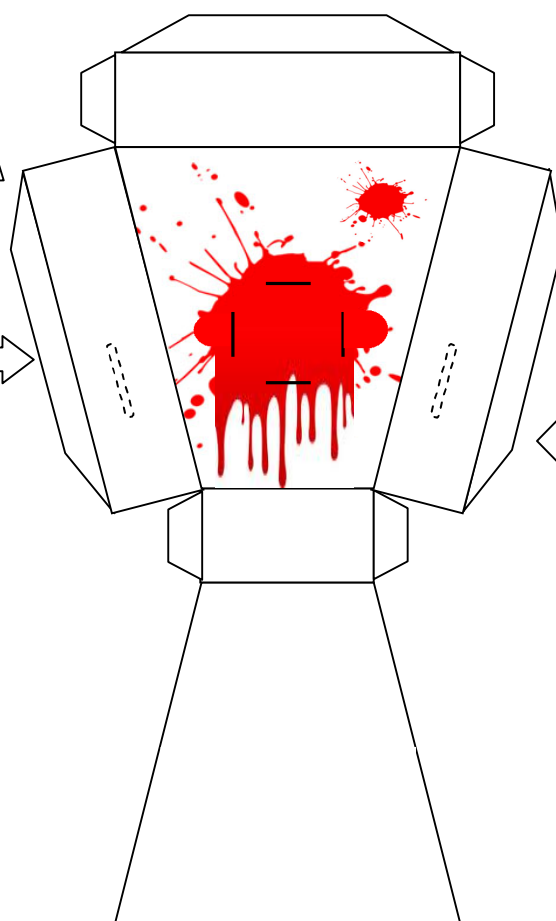
littleplasticman.blogspot.com

Cut the black lines
to insert the chest
burster.

Paste arm at the top
of slit

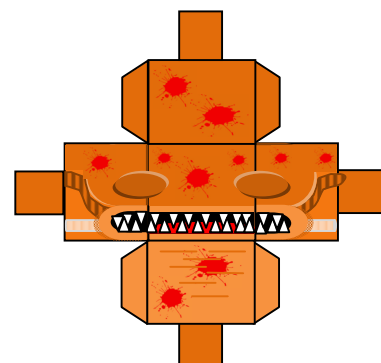


HANDS



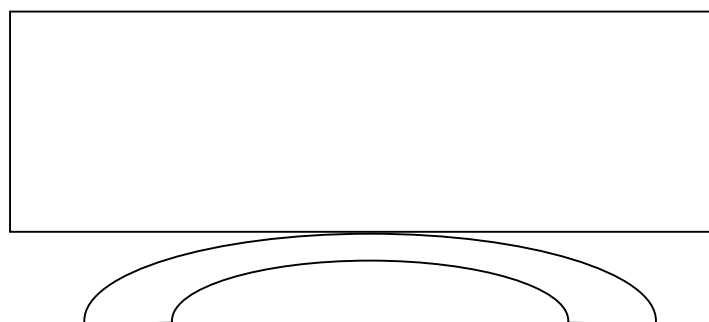
BODY

Chest Burster



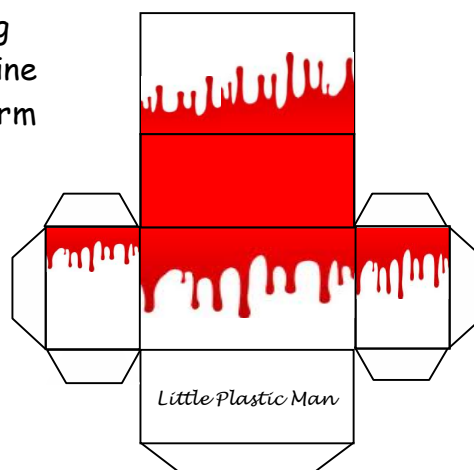
Cut along the dotted
lines. The opening is
for the arm to go in

Fold along the black
lines



ARM

Fold and
cut along
the outline
of the arm



LEGS

Little Plastic Man



**FLAT
HEADS**

By Little Plastic Man