

# RECORD OF SURVEY

34 - 76

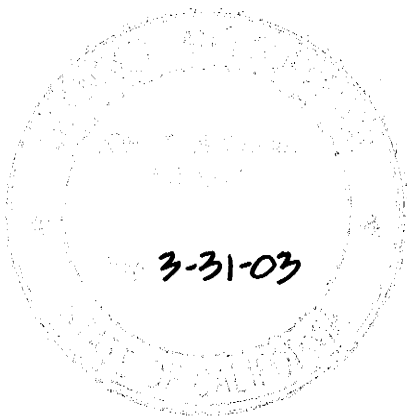
OF THE RIGHT-OF-WAY OF STATE ROUTE MNO 395  
THROUGH PORTIONS OF SECTIONS 3 & 10, T. 1 S.,  
R. 26 E., M.D.M., AND SECTIONS 9, 15, 16, 22, 27 & 34, T. 1 N.,  
R. 26 E., M.D.M., IN THE UNINCORPORATED TERRITORY  
OF THE COUNTY OF MONO, STATE OF CALIFORNIA.

## SURVEYOR'S STATEMENT

THIS MAP CORRECTLY REPRESENTS A SURVEY MADE BY ME OR UNDER MY DIRECTION IN CONFORMANCE WITH THE REQUIREMENTS OF THE LAND SURVEYORS' ACT AT THE REQUEST OF THE CALIFORNIA DEPARTMENT OF TRANSPORTATION. THE BASIC CONTROL SURVEY WAS PERFORMED IN OCTOBER AND NOVEMBER OF 1991. THE RIGHT-OF-WAY MONUMENTS WERE SET IN JANUARY THROUGH MARCH OF 2000.

*John F. Beischel*  
JOHN F. BEISCHEL  
LS 6461  
EXP. 3/31/03

DATE: 2-25-02



## COUNTY SURVEYOR'S STATEMENT

THIS MAP HAS BEEN EXAMINED IN ACCORDANCE WITH SECTION 8766 OF THE LAND SURVEYORS' ACT THIS 2 DAY OF MARCH, 2002

*Richard C. Boardman*  
RICHARD C. BOARDMAN, L.S. 4686  
MONO COUNTY SURVEYOR  
LICENSE EXPIRES: 9-30-03



## RECORDER'S STATEMENT

FILED THIS 1st DAY OF APRIL, 2002, AT 2:21 P.M. IN BOOK 3 OF RECORD OF SURVEY MAPS AT PAGE 91-91U, AT THE REQUEST OF THE CALIFORNIA DEPARTMENT OF TRANSPORTATION.

RENN NOLAN  
MONO COUNTY RECORDER

BY: *Solene Kwas*  
DEPUTY COUNTY RECORDER

INSTRUMENT No.: 26202392

FEE: NO FEE



GRID NORTH  
GEODETIC AZ. - GRID AZ. CONVERGENCE

SCALE  
1:24000  
METERS

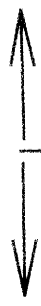
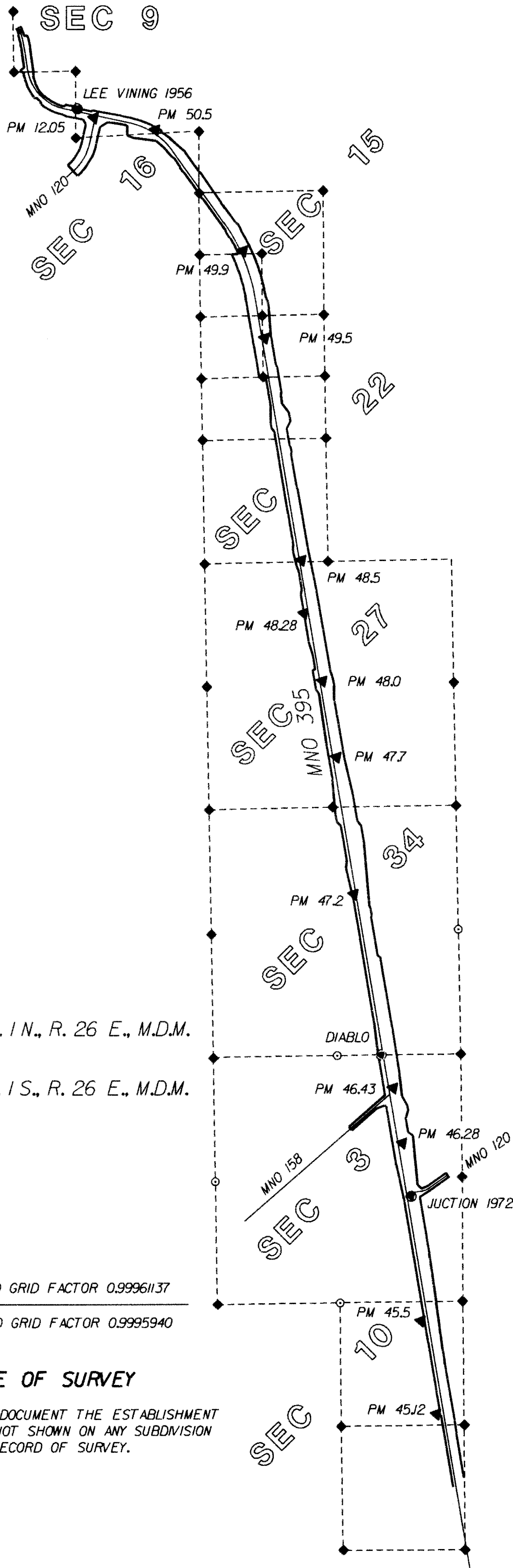


## LEGEND

- ◆ FOUND LAND NET CORNER, AS NOTED
- FOUND MONUMENT, AS NOTED
- ▲ PROJECT CONTROL MONUMENT, 3/4 INCH REBAR WITH CALTRANS ALUMINUM CAP, MARKED AS SHOWN
- ⊙ SET R/W MONUMENT, 3/4 INCH REBAR WITH CALTRANS ALUMINUM CAP, MARKED AS SHOWN
- CALCULATED POINT, NOTHING SET.
- SIX INCH SQUARE, CONCRETE, TYPE "C" RIGHT-OF-WAY MONUMENT.
- RIGHT-OF-WAY PER CALTRANS RIGHT-OF-WAY RECORD MAPS.
- N.G.S. MONUMENT, AS NOTED.
- ⊙ BENCH MARK, AS NOTED.

## BASIS OF BEARINGS

COORDINATES, DISTANCES AND BEARINGS SHOWN ON THIS MAP ARE BASED ON THE N.G.S. PUBLISHED CALIFORNIA COORDINATE SYSTEM 1983 (1986), ZONE 3, COORDINATES FOR STATIONS LAKE 1956, PIT CADH 1972, DIABLO, DAM CADH 1975, JUNCTION CADH 1972 AND AEOLIAN CADH 1975, AND WERE DETERMINED BY A COMBINATION OF G.P.S. AND CONVENTIONAL METHODS. THE N.G.S. PUBLISHED VALUES FOR STATION LEE VINING 1956 DO NOT FIT WITH OTHER CONTROL AND WERE NOT USED. ALL DISTANCE VALUES SHOWN ARE IN GRID METERS. TO CONVERT METERS TO U.S. SURVEY FEET, MULTIPLY DISTANCES BY 3937/1200. TO OBTAIN A GROUND LEVEL DISTANCE, DIVIDE THE GRID DISTANCE BY THE COMBINED GRID FACTOR. ALL ELEVATIONS SHOWN ARE N.G.V.D. 1929 ELEVATIONS.



COMBINED GRID FACTOR 0.99961137  
COMBINED GRID FACTOR 0.9995940

## PURPOSE OF SURVEY

THIS MAP IS FILED TO DOCUMENT THE ESTABLISHMENT OF POINTS AND LINES NOT SHOWN ON ANY SUBDIVISION MAP, OFFICIAL MAP OR RECORD OF SURVEY.