

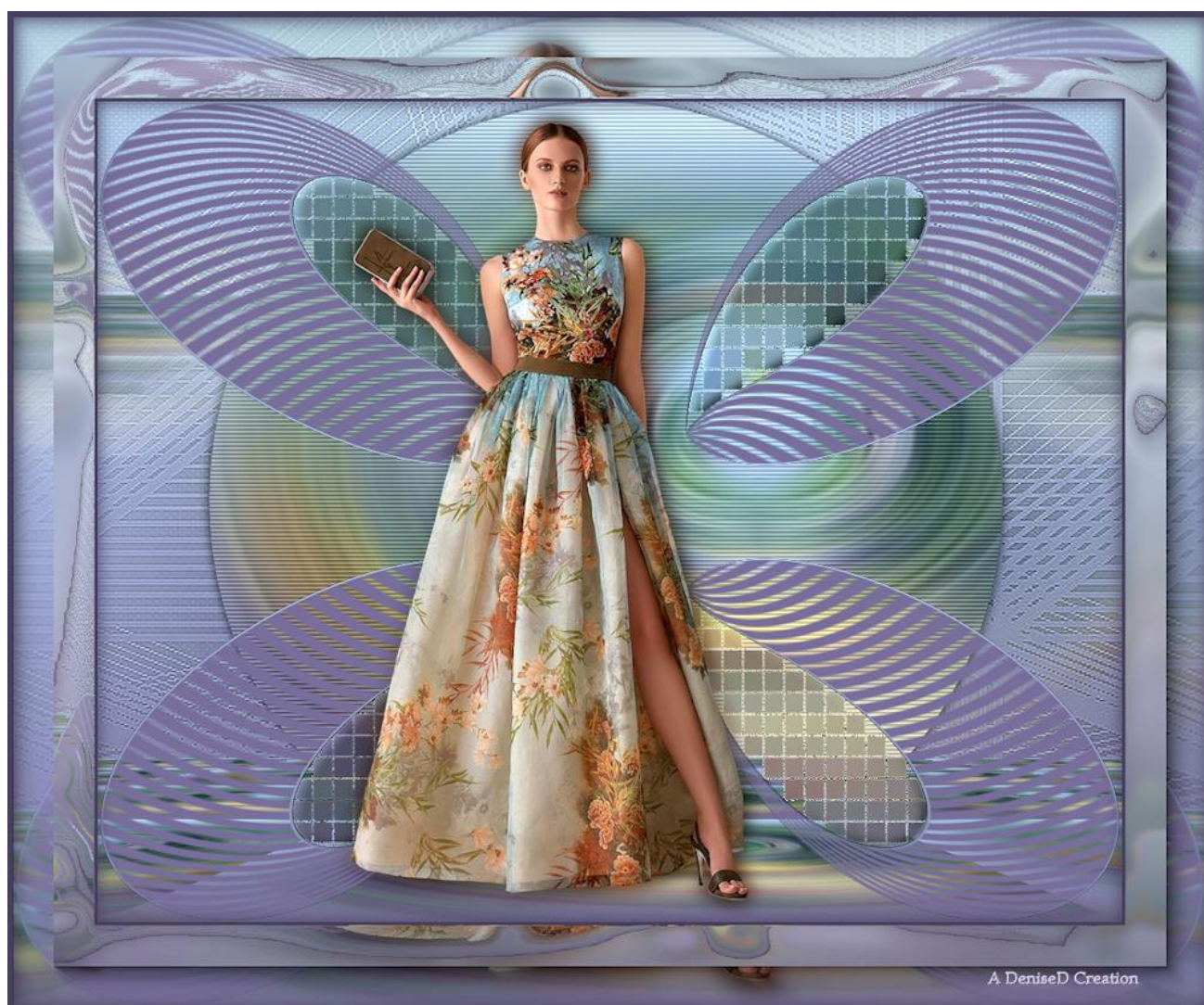
This tutorial is written by Denise D. on 14th February, 2021
from my own ideas.

Any resemblance to other tutorials is co-incidental and unintentional.
If you wish to share my Tutorials, you **MUST** obtain my permission first.
All I ask is that you advise me and credit for the tutorial is given to me and
linked to

<http://escapingtopsp2.altervista.org/Home/homeb.html>

Please do not upload any of my completed Tutorial images onto sites
such as Fotki, Pinterest, Photobucket or similar

MADAM BUTTERFLY





Thank you Inge-Lore for this German Translation



Thank you Marion for this French Translation



Click on the Box to download Supplies

Supplies

Images:

Sorensen_Designs Mist Sept 111-11.pspimage

You can join this Group at:

<https://groups.yahoo.com/neo/groups/SorensenDesignsMistsandTubes/info>

KamilTubes-572.png

You can join this Group at:

<https://kamiltubes.blogspot.com/>

Some of these image were obtained from the Internet
If you are the owner of this image, please contact me
so that credit can be given to you

Alpha Channel

Preset:

Flexify 2 Madam Butterfly Preset q2q
(place this in your Flexify 2 Folder)


Mask:

lines2.mpg

Signature:

DeniseD signature.png

Colour Swatch

Double Click on the  icon in your supplies folder to install this Preset in your Plugin.

Plugins:

Caroline & Sensibility
Flaming Pear
AAA Frames
AAA Filters
MuRa's Meister
Simple

VM Extravaganza
Toadies
(Import into Filters Unlimited 2.0)

Found here:



AND



Notes:

This Tutorial was created in Corel 2020.... **other versions may need adjustment**

Some of the graphics may be from Free to Use sites or Share Groups.

If you are the creator of one of these please let me know so that appropriate credit can be given.

No infringement of copyright is intended or intentional.

Before opening PSP, download plugins and install

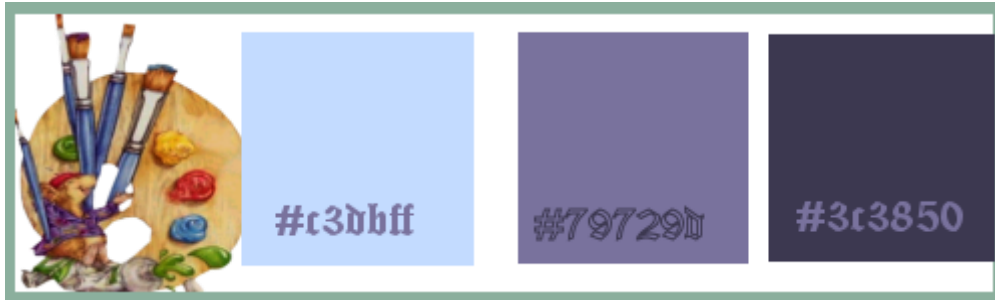
Please Note: Offset settings provided in this tutorial may vary according to size of your image.

Please adjust to suit.

The settings remain the same throughout this Tutorial unless otherwise stated.

Set your Foreground colour to #c3dbff

Set your Background colour to #79729d



Step One:

Place Mask in PSP Mask Folder

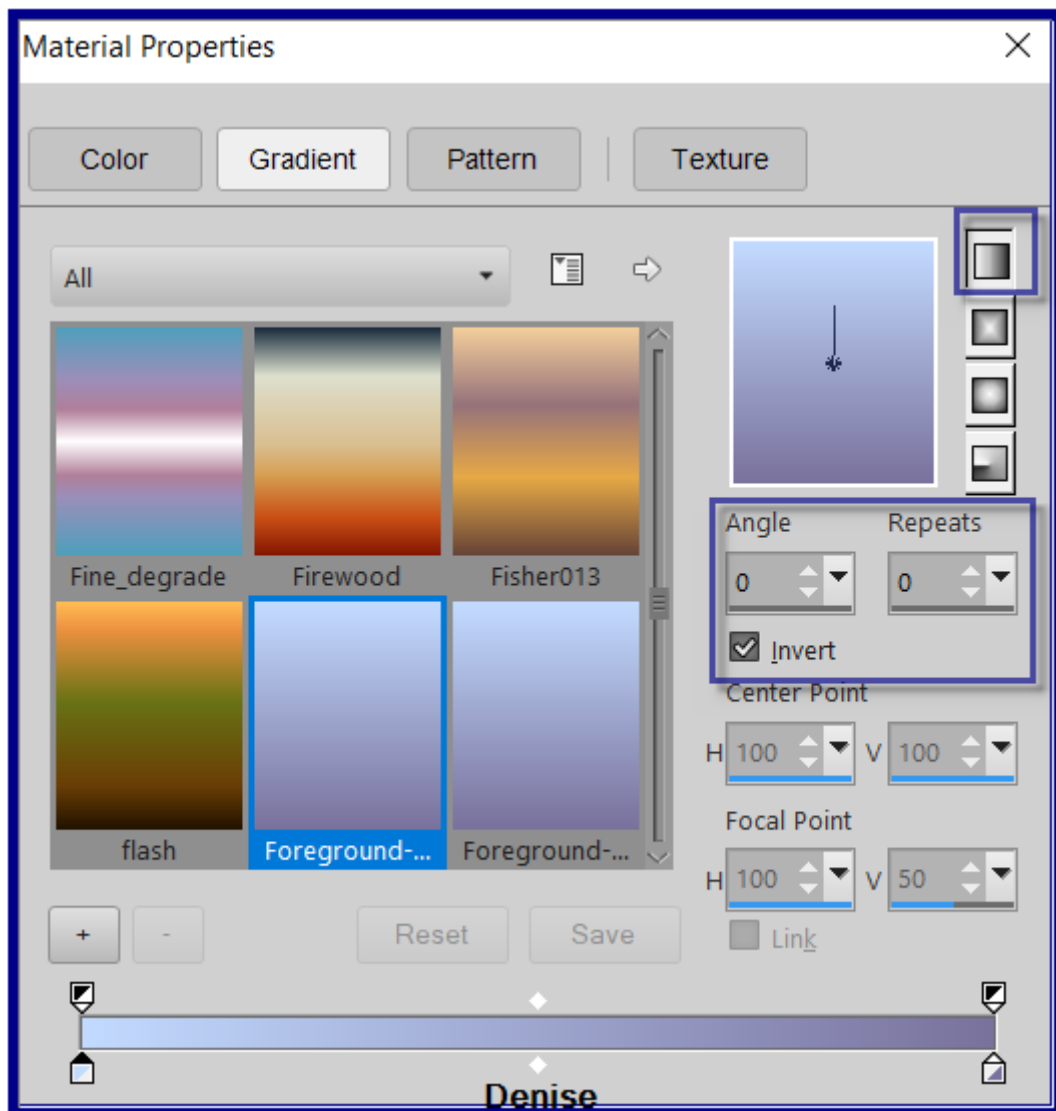
Open graphics in PSP, duplicate (Shift D) and close the original.

Open Alpha Channel

Duplicate and close Original Alpha Channel

We will work on the copy which contains the invisible selections

Change Foreground Colour to Foreground/Background/Linear Gradient as follows:



Flood fill with Gradient

Step Two:

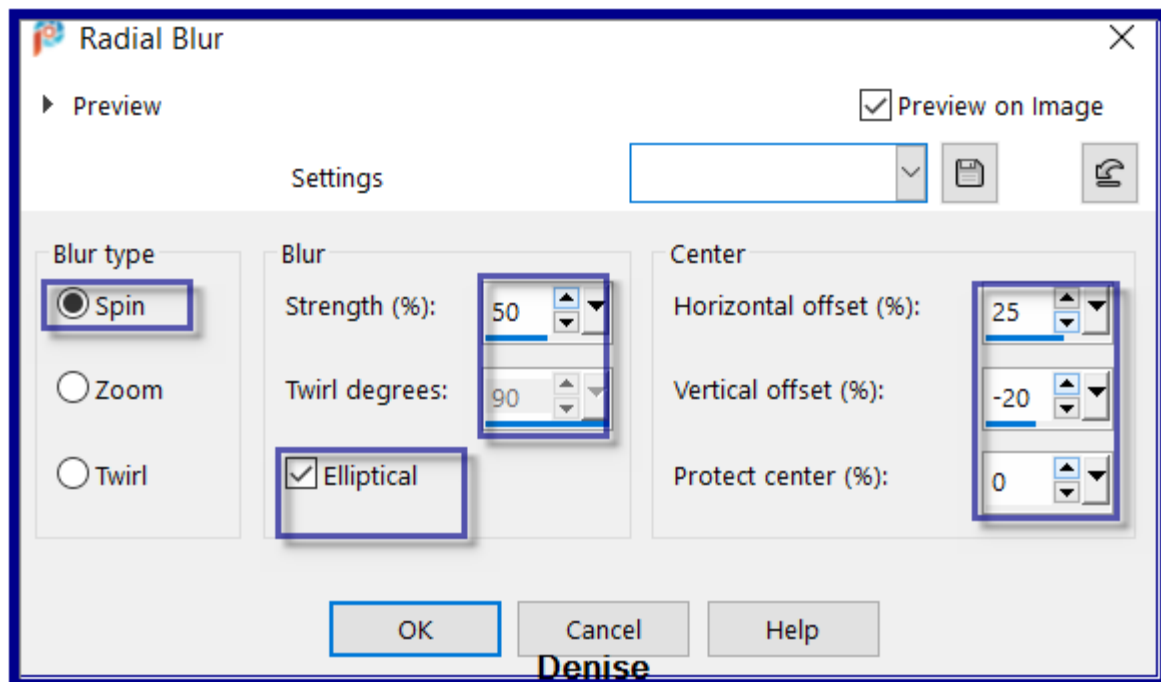
Selections/Select All

Maximise Sorensen_Designs Mist Sept 111-11.png

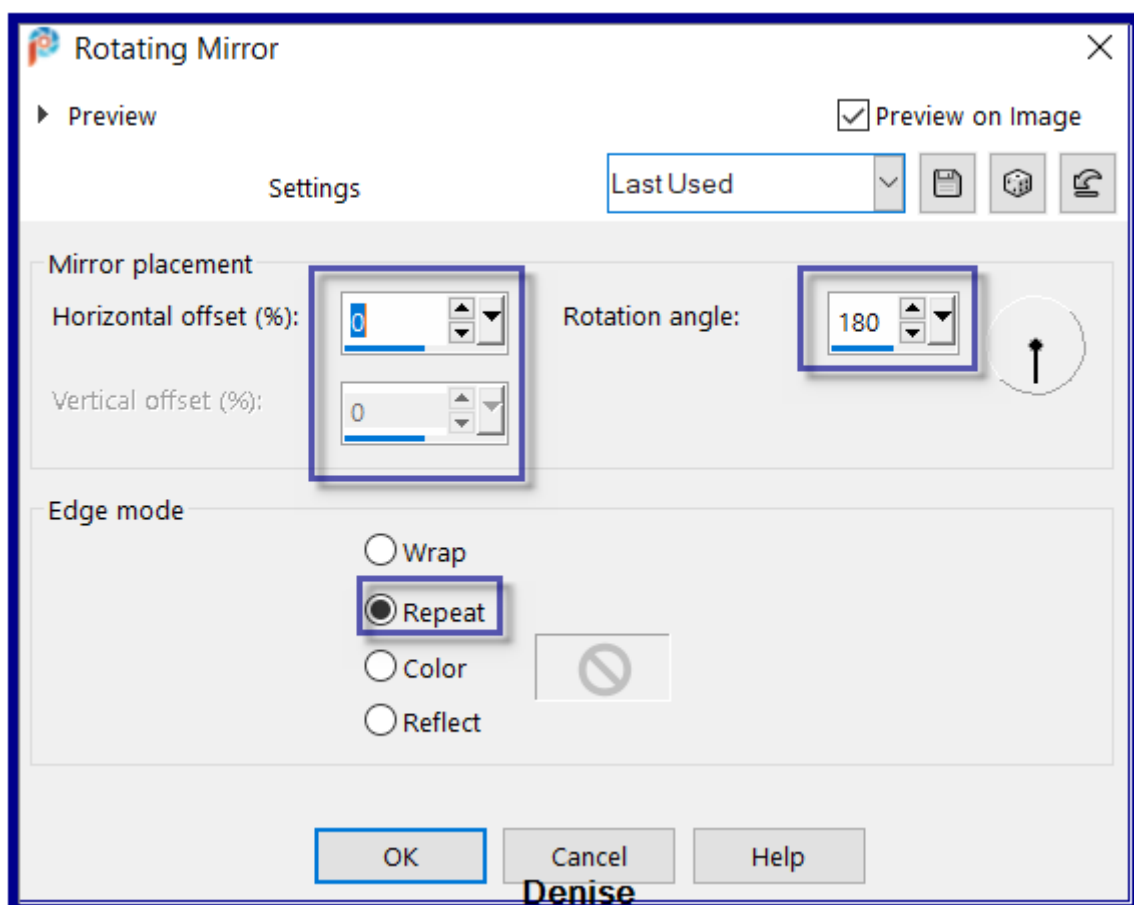
Edit/Copy Edit/Paste into Selection

Selection/Select None

Adjust/Blur/Radial Blur/Spin as follows:



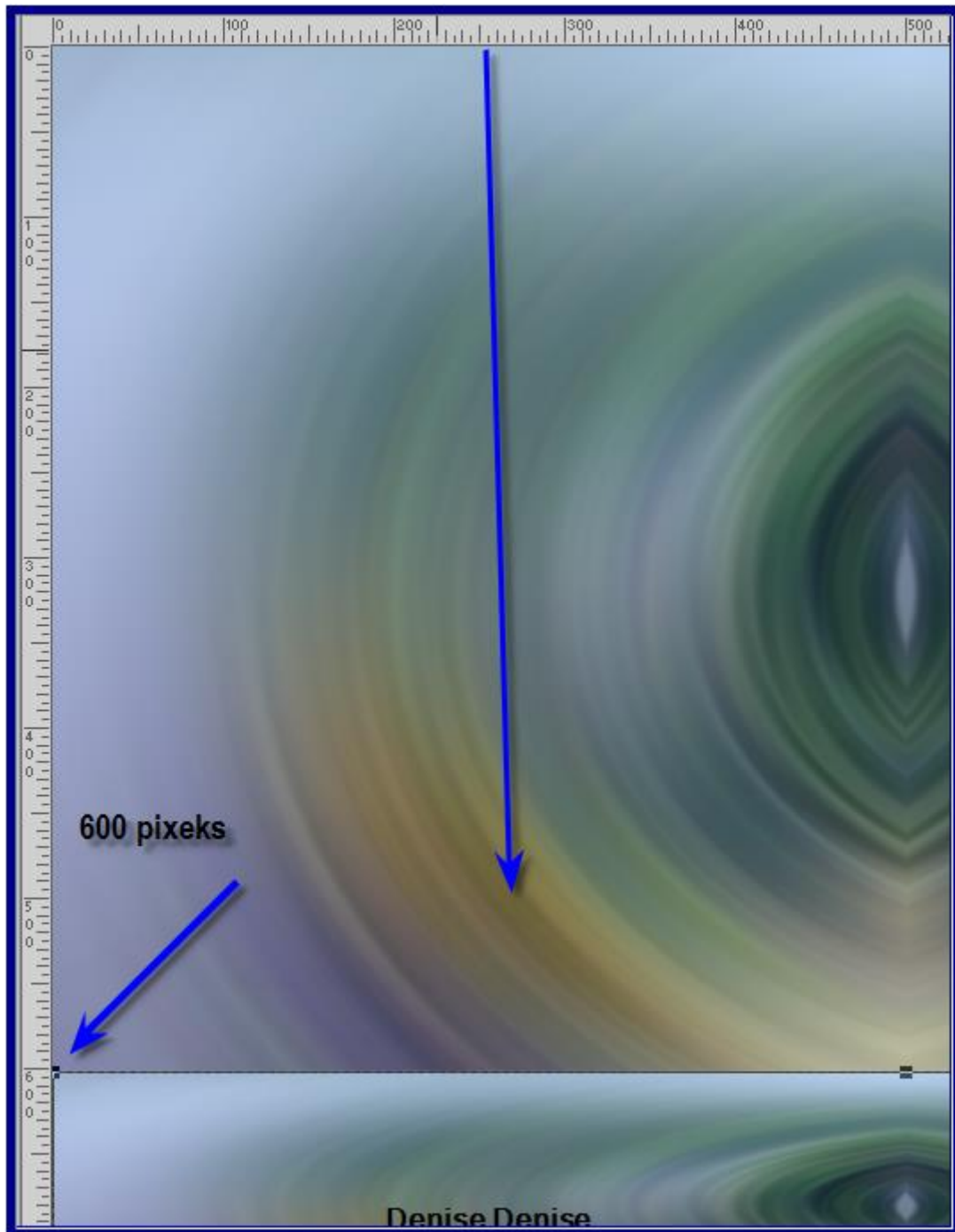
Effects/Reflection Effects/Rotating Mirror as follows:



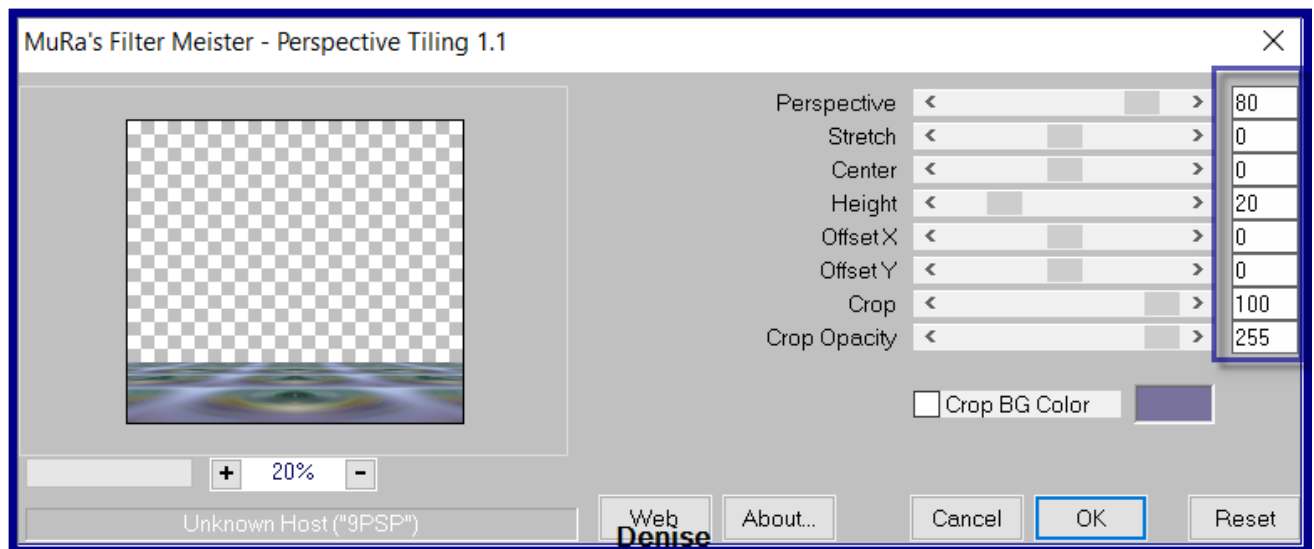
Adjust/Sharpness/Sharpen More
Layers/Duplicate

Step Three:

Using Deform/Pick Tool, pull the layer down from the top to 600 pixels as shown below:



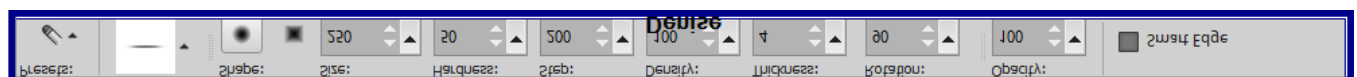
Deselect Deform/Pick Tool
Effects/Plugins/MuRa's Meister/Perspective Tiling as follows:



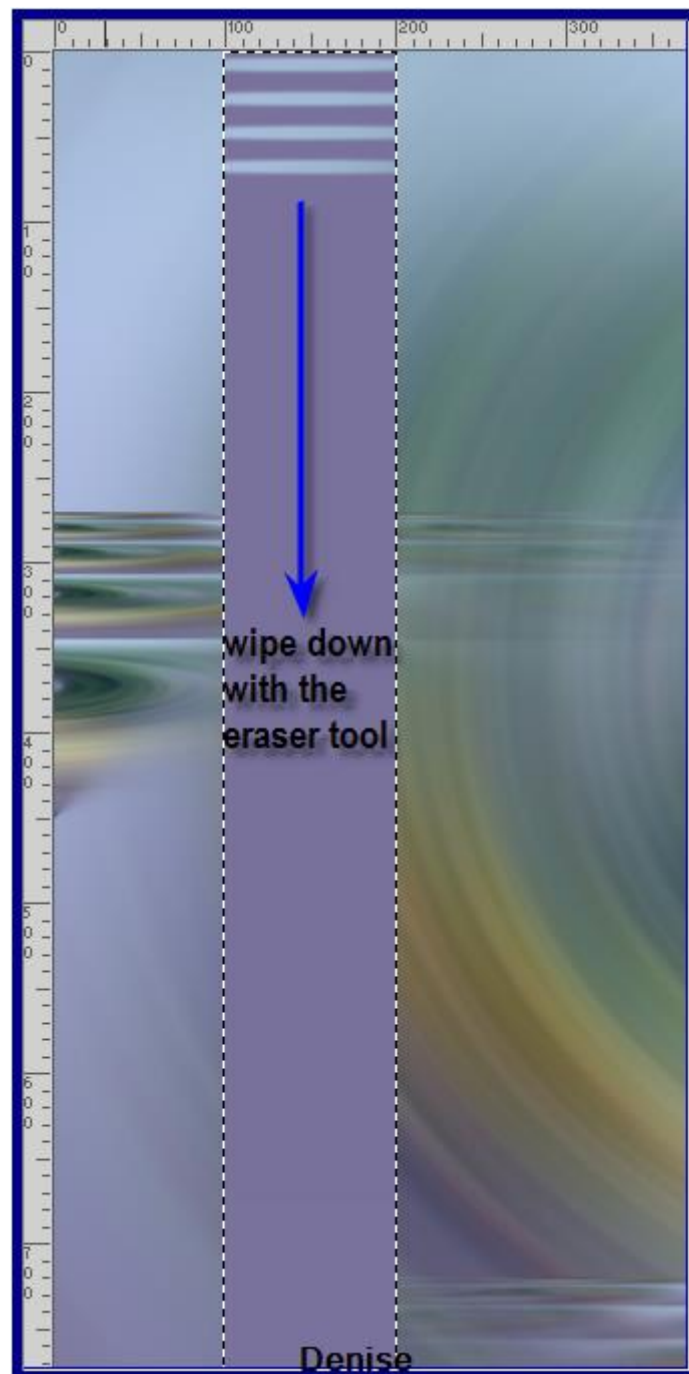
Selections/Select None
 Layers/Duplicate
 Effects/Image Effects/Seamless Tiling/Default Settings
 Effects/Plugins/Filters Unlimited 2.0/Toadies/What Are you/Default Settings
 Layers/Arrange/Move Down
 Select Copy of Raster 2 Layer
 Layers/Merge/Merge Down

Step Four:

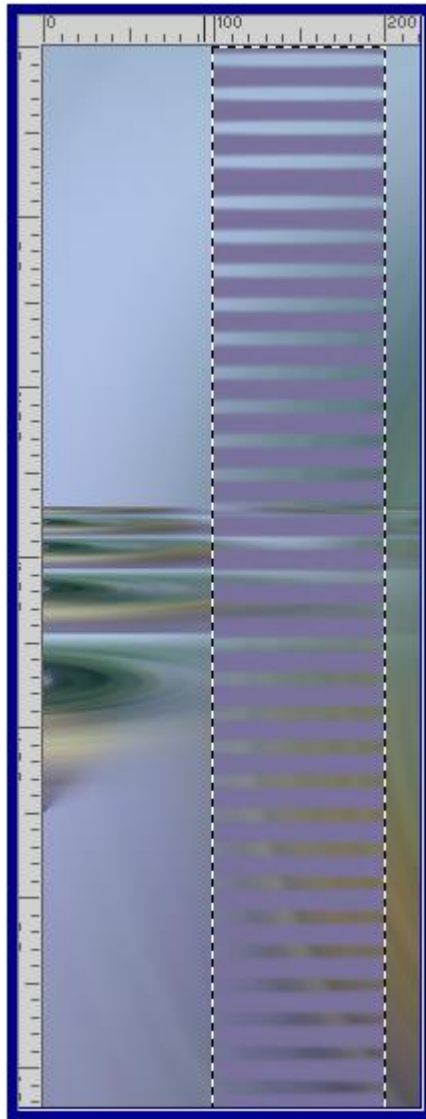
Layers/New Raster Layer
 Selections/Load/Save Selection/Load Selection #1 from Alpha Channel
 Flood fill with Background Colour
 Tools/Eraser Tool with the following settings:



Using the Eraser Tool and the left button on the Mouse, wipe down the selection in one movement as follows:



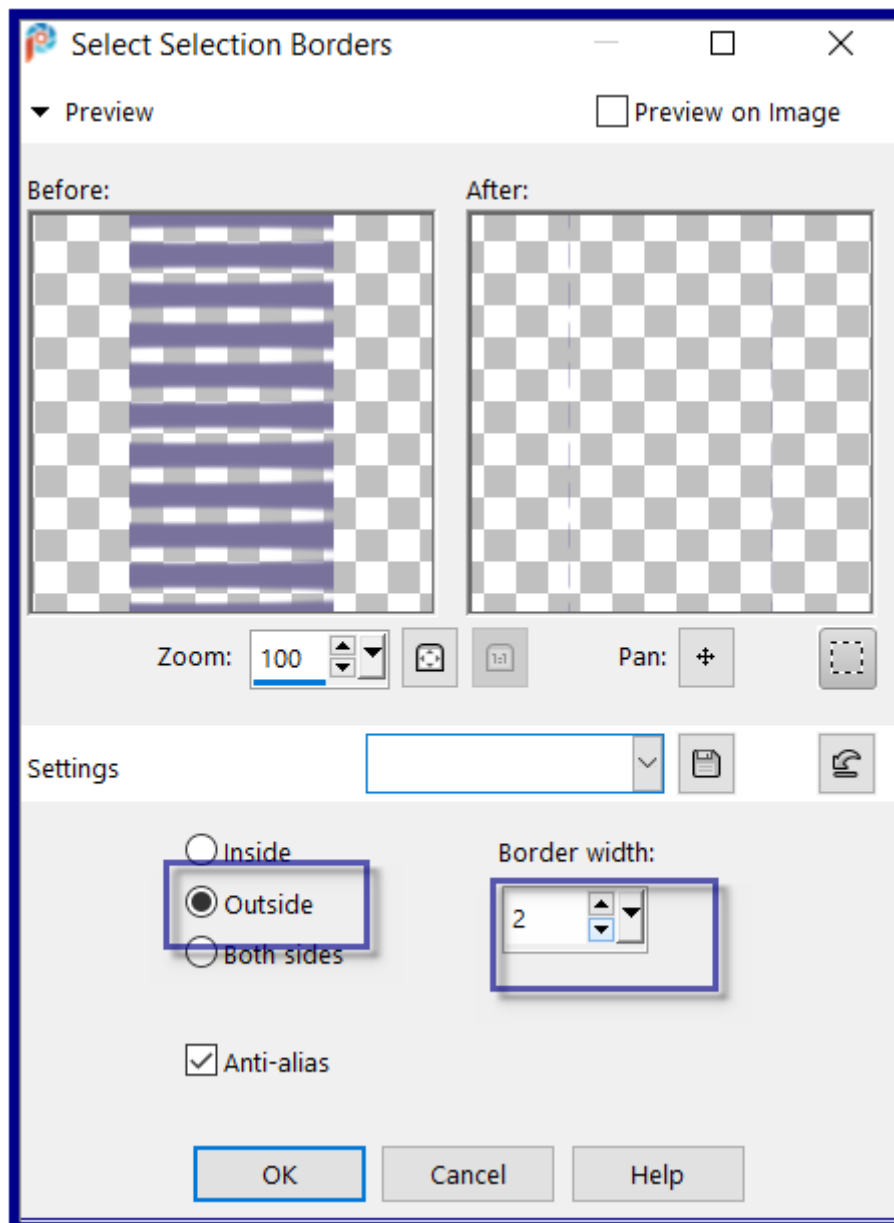
THIS IS THE RESULT



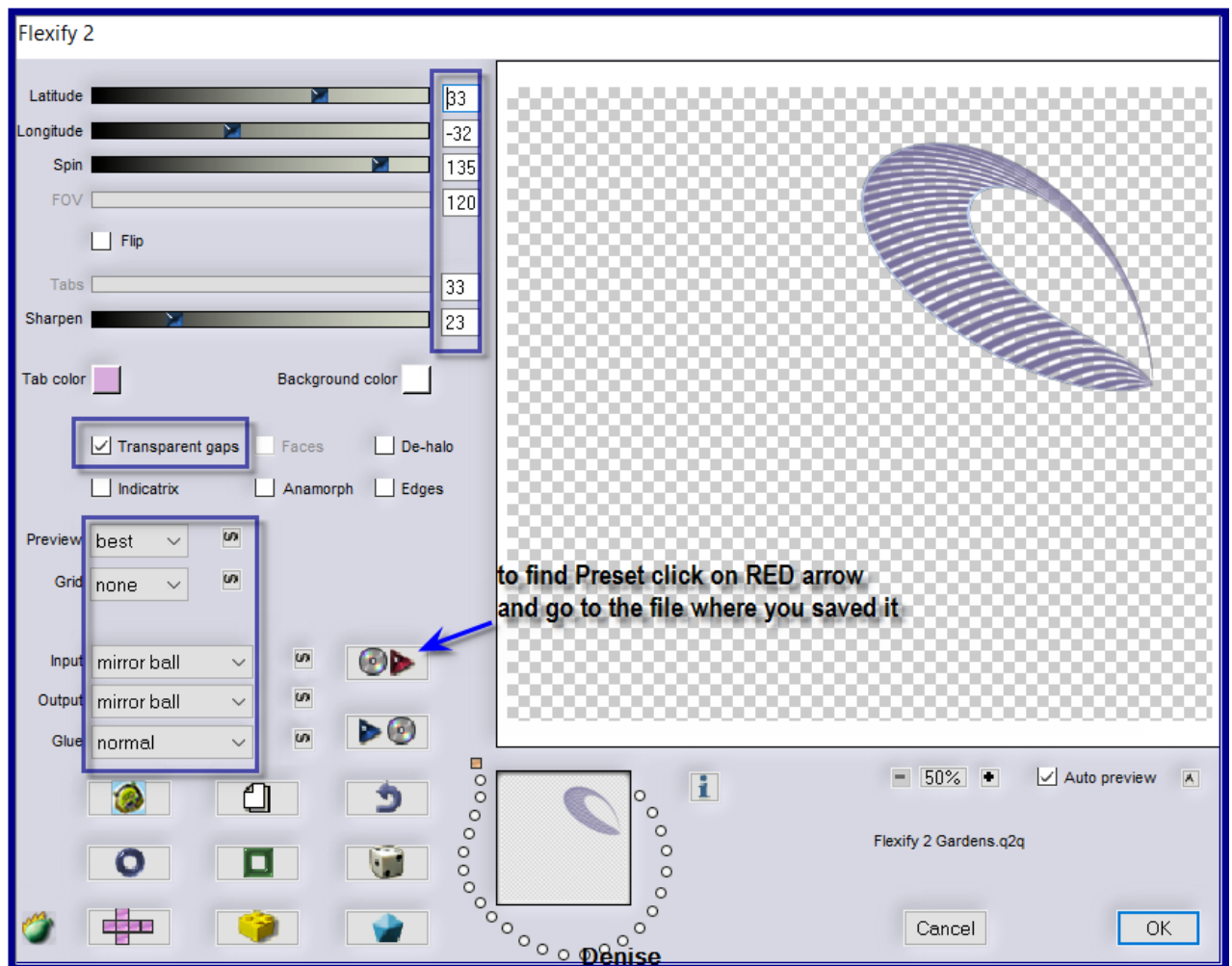
Deselect Eraser Tool

Step Five:

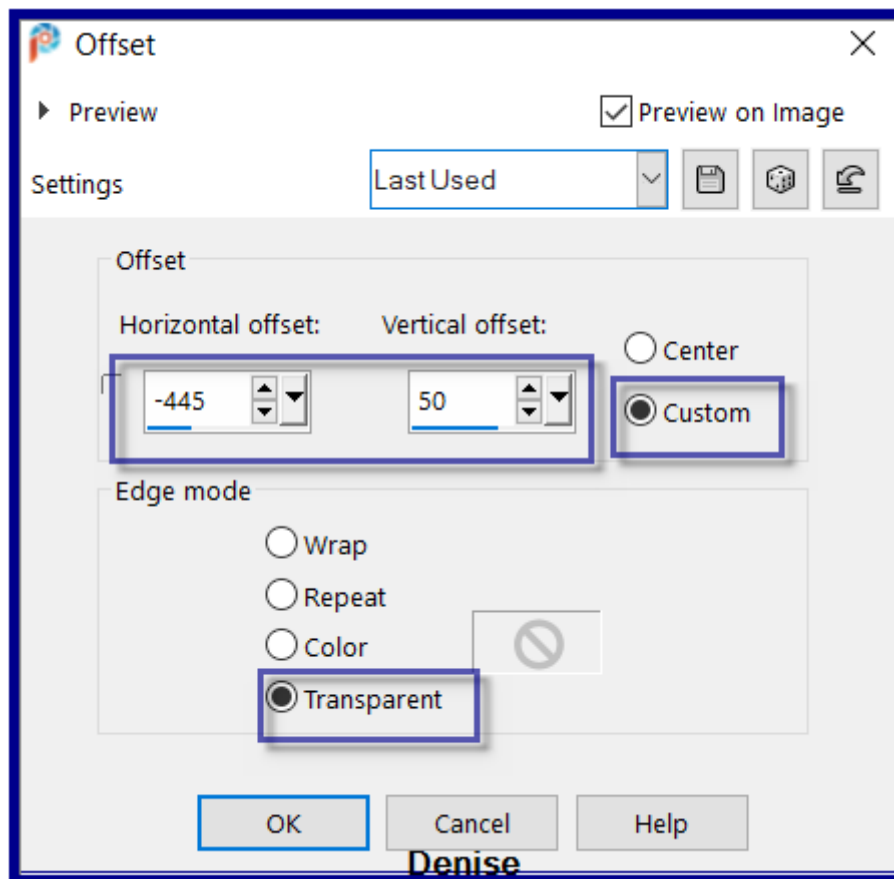
Selections/Modify/Select Selection Borders/2 pixels outside as follows:



Flood fill with Foreground Gradient
Selections/Select None
Effects/Plugins/Flaming Pear/Flexify 2 Madam Butterfly Preset q2q OR as follows:



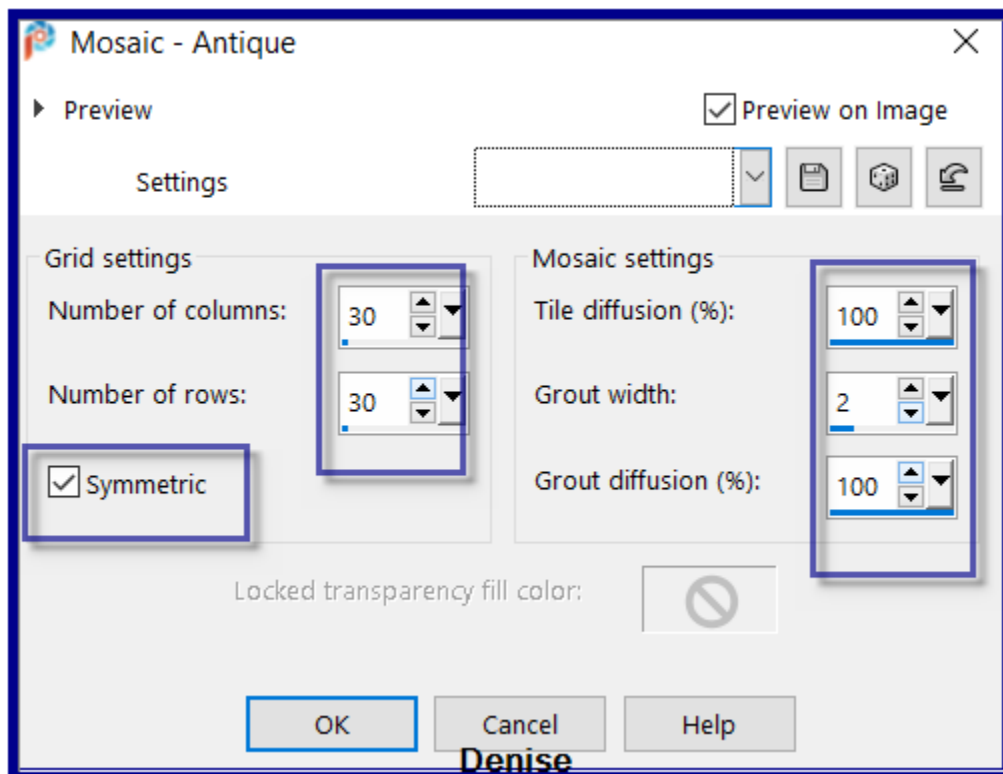
Effects/Image Effects/Offset as follows:



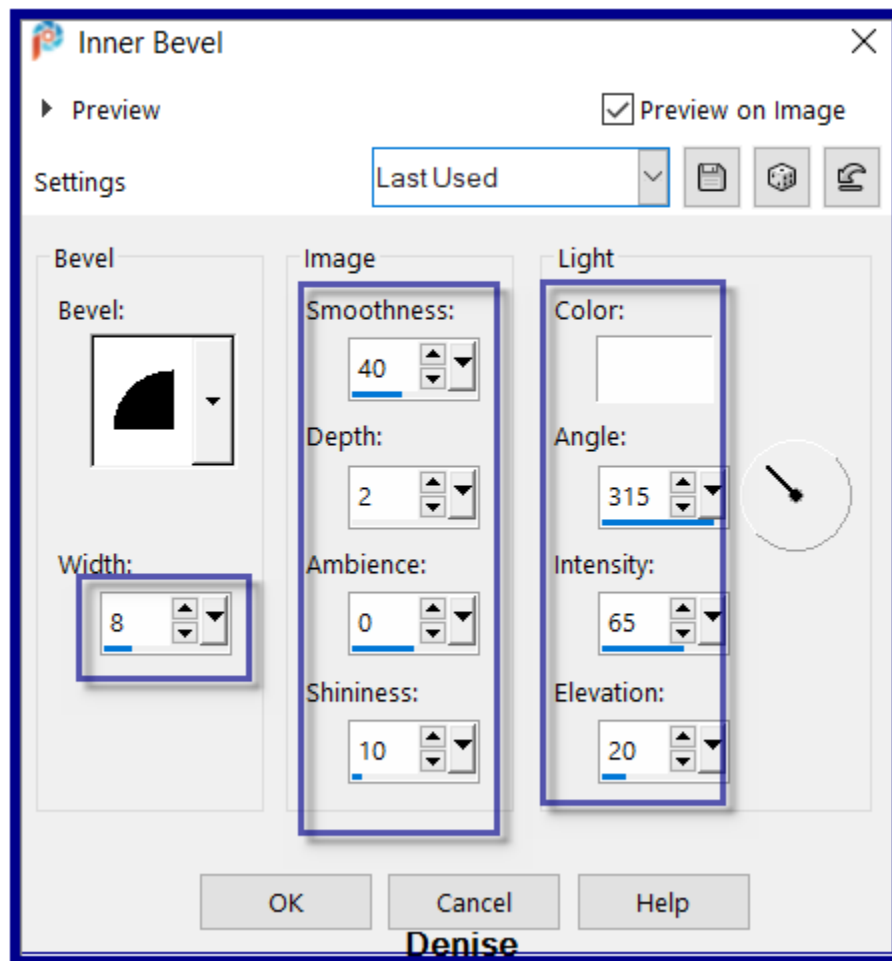
Effects/Plugins/Simple/Top Left Mirror

Step Six:

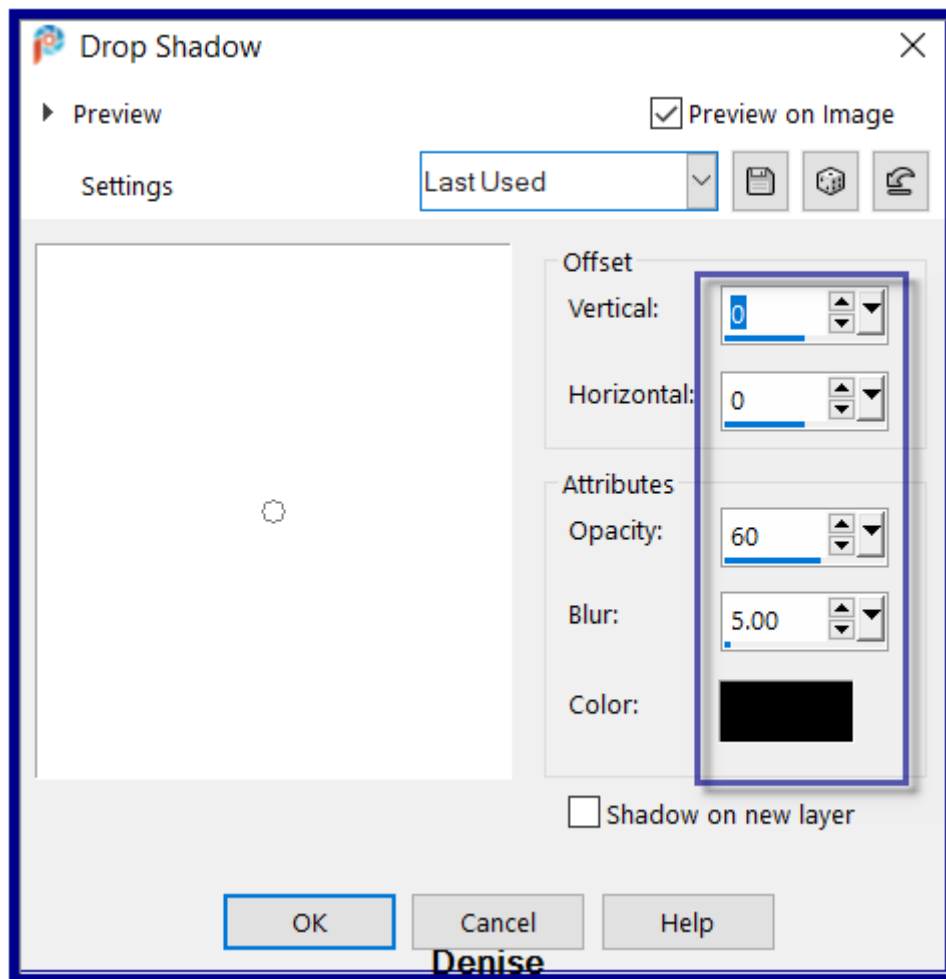
Layers/New Raster Layer
Selections/Load/Save Selection/Load Selection#2 from Alpha Channel
Select Raster 1
Promote Selection to Layer
Layers/Arrange/Bring to Top
Effects/Texture Effects/Mosaic Antique as follows:



Adjust/Sharpness/Sharpen
Effects/3D Effects/Inner Bevel as follows:



Effects/3D Effects/Drop Shadow as follows:



Selections/Select None

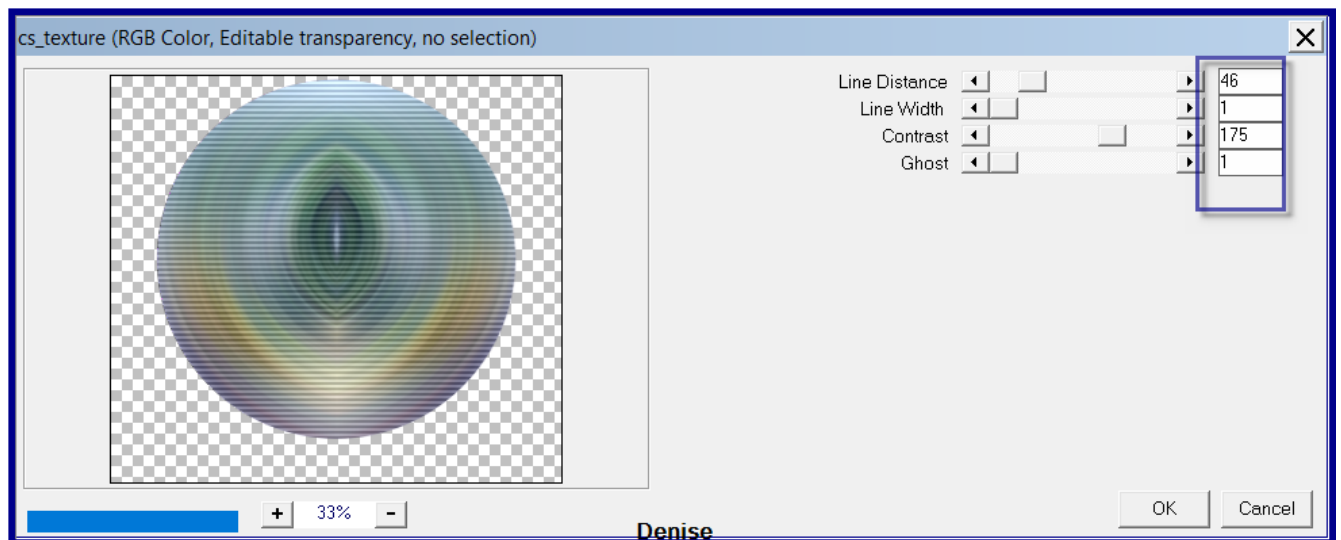
Step Seven:

Select Raster 1

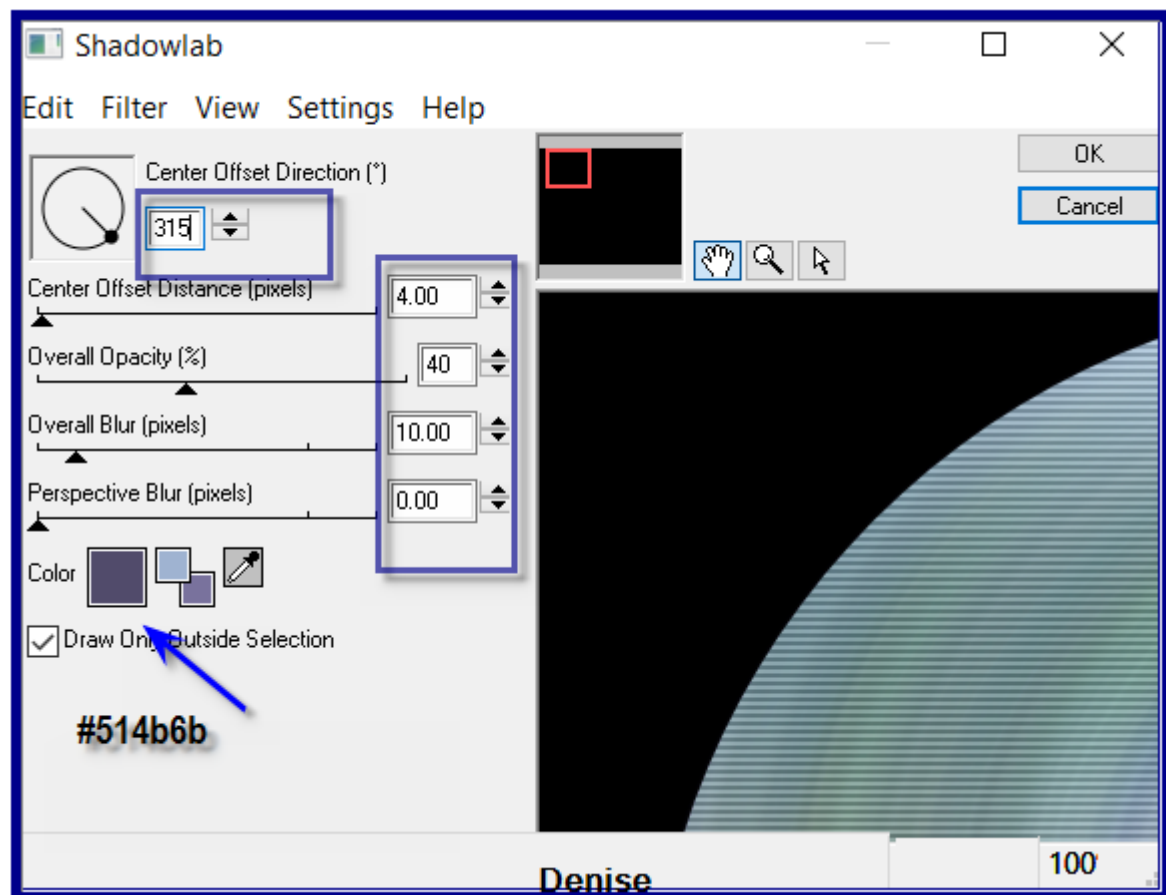
Selections/Load/Save Selection/Load Selection #3 from Disk

Promote Selection from Layer

Effects/Plugins/Caroline & Sensibility/cs_Texture as follows:



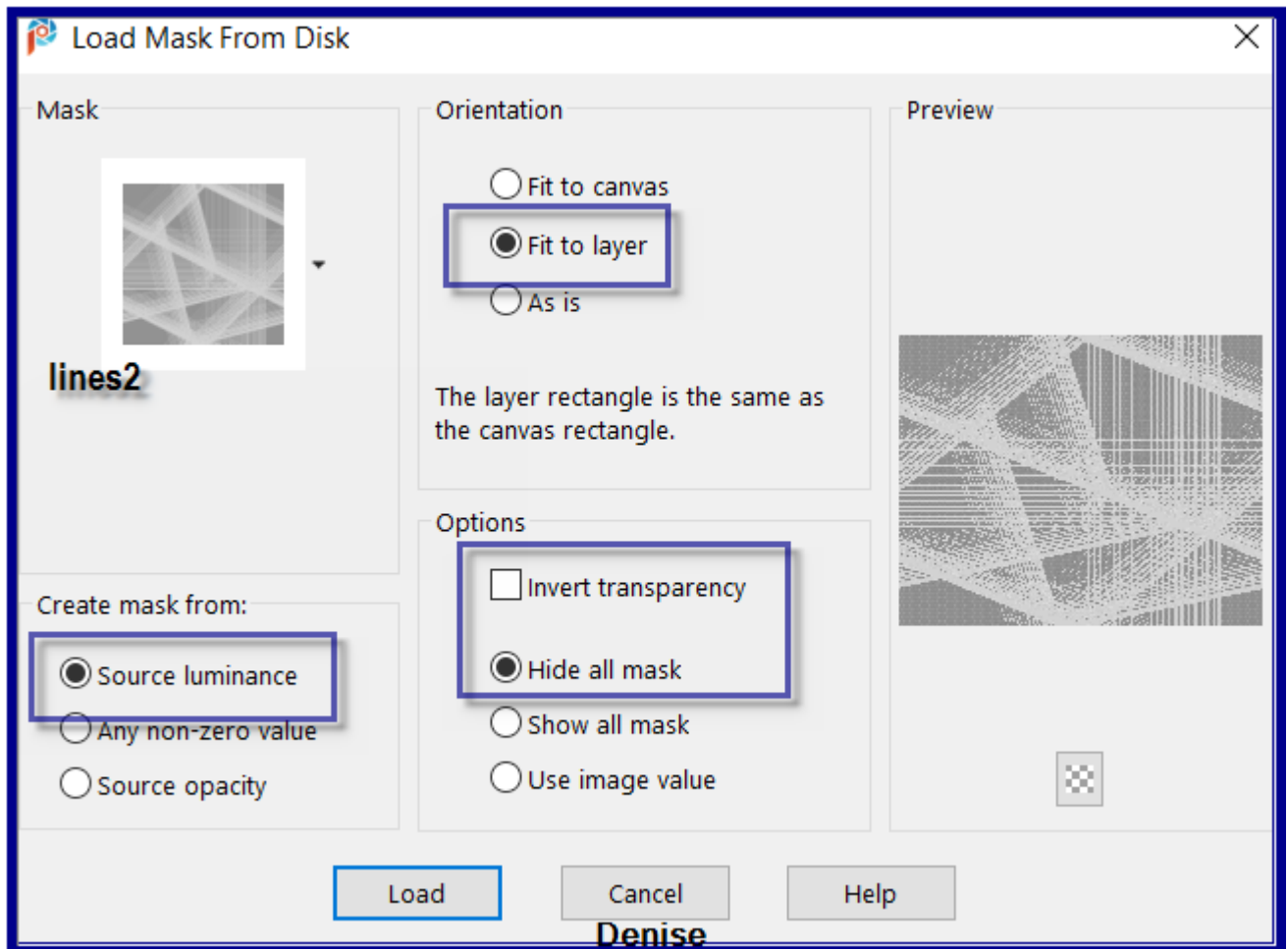
Effects/Plugins/Eye Candy 4000/Shadowlab as follows:



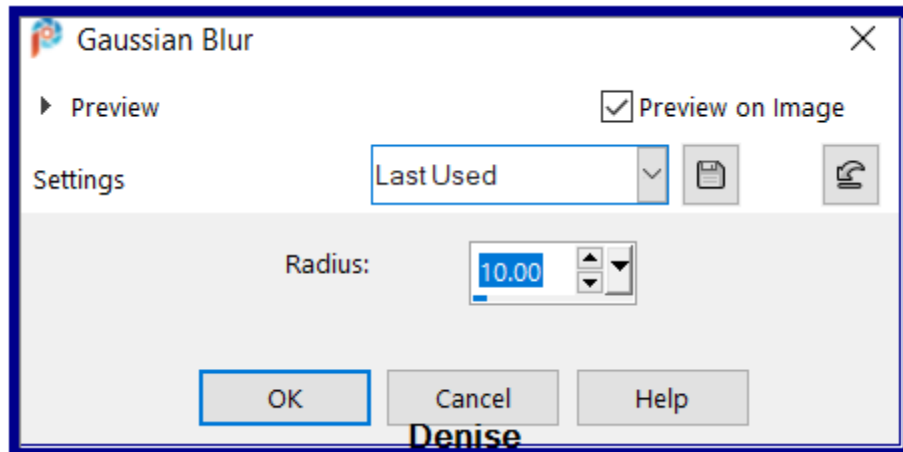
Repeat Shadowlab/Direction 135
Selections/Select None

Step Eight:
Select Raster 1
Layers/New Raster Layer

Flood fill with Foreground Gradient
Layers/Load/Save Mask/Load Mask lines2.jpg as follows:



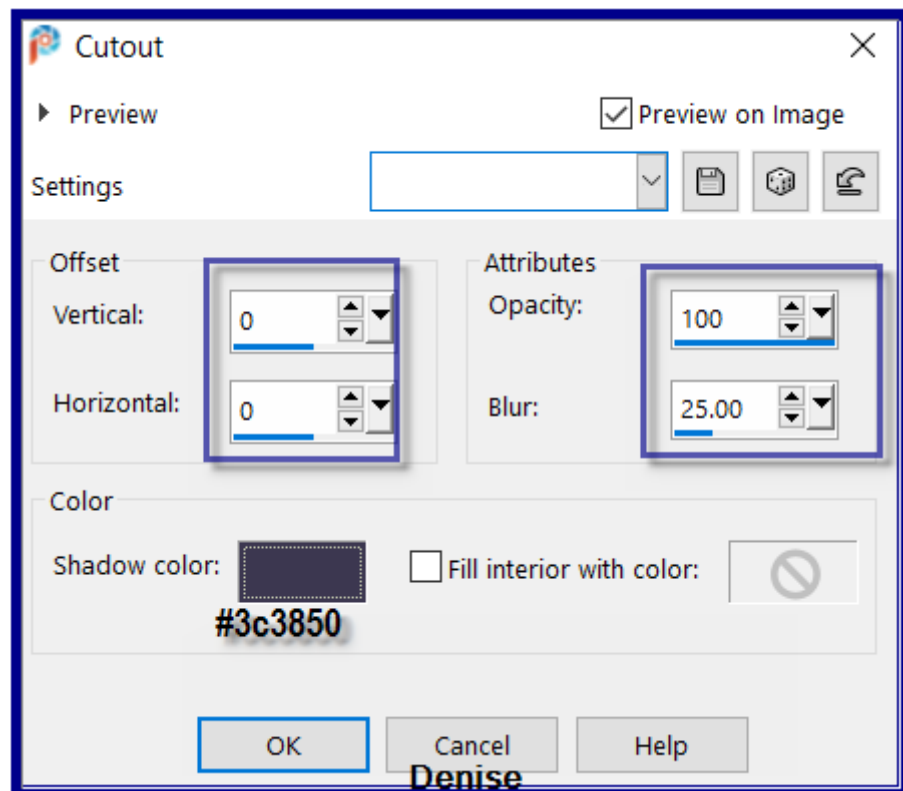
Layers/Merge/Merge Group
Effects/Edge Effects/Enhance
Select Layer at top of pile
Maximise KamilTubes-572.png
Edit/Copy Edit/Paste as New Layer
Carefully remove the tuber's watermark
leave image where it is
Layers/Duplicate
Select Raster 4
Adjust/Blur/Gaussian Blur as follows:



Change Blend Mode to Multiply or blend of your choice
Layers/Merge/Merge Visible

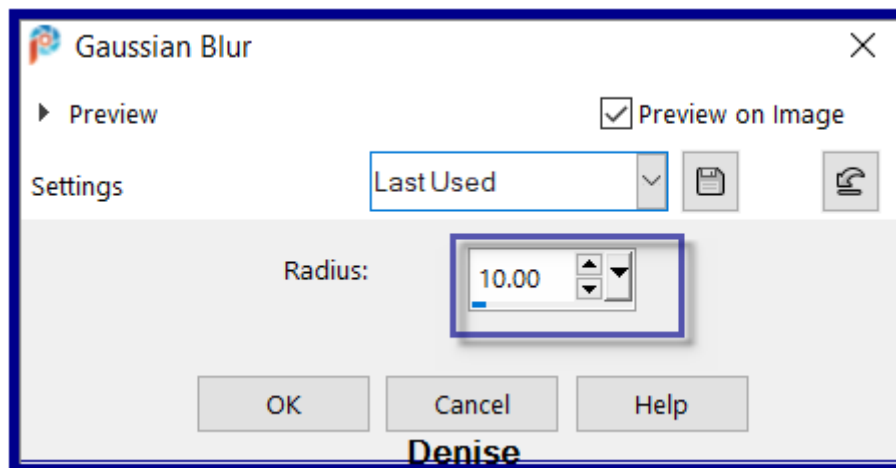
Step Nine:

Edit/Copy Edit/Paste as New Image
Minimise for now
Back to original work
Selections/Select All
Layers/New Raster Layer
Effects/3D Effects/Cutout as follows:

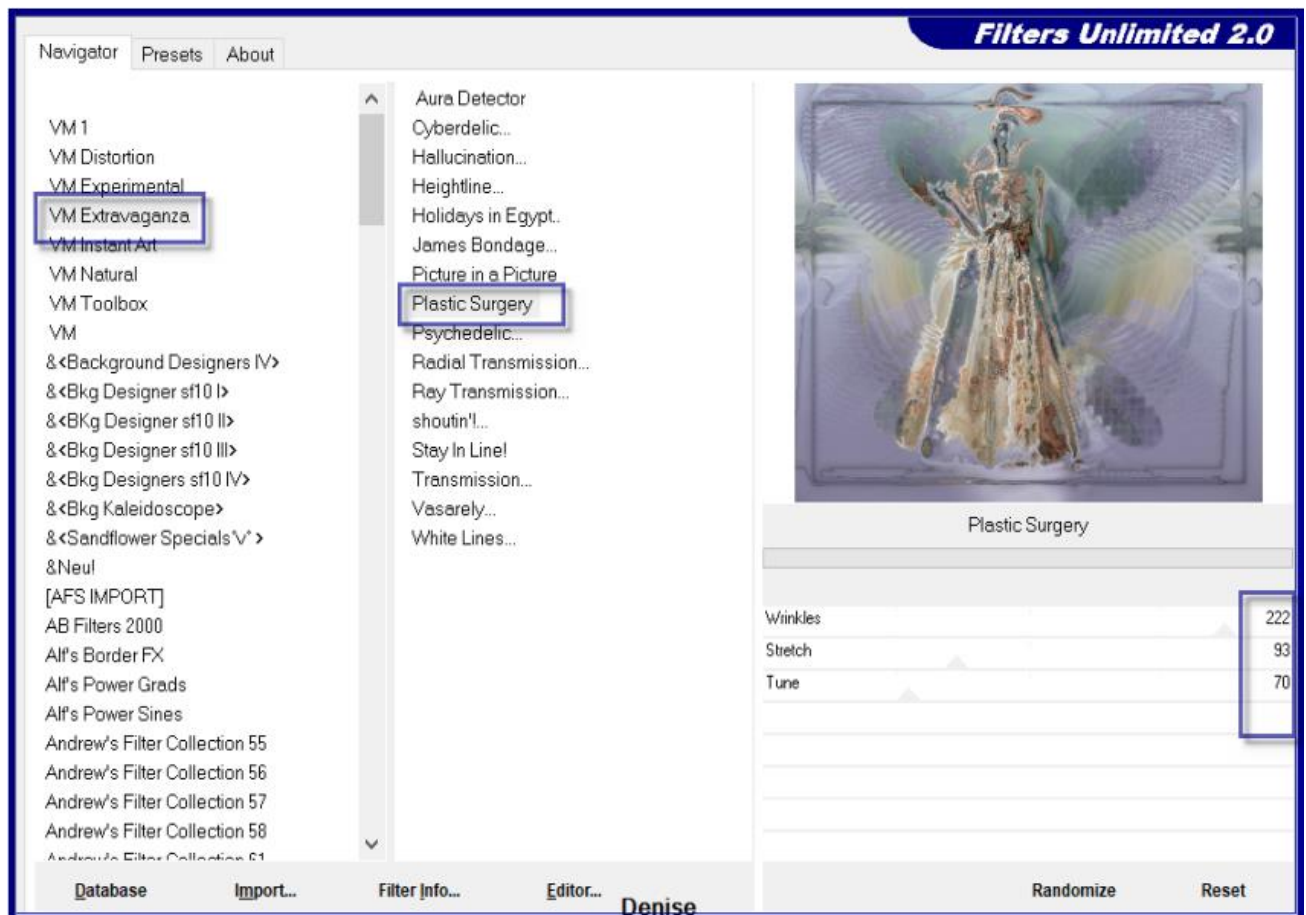


Selections/Select None

Image/Add Borders/3 pixels/#3c3850
Selections/Select All
Image/Add Borders/40 pixels/White
Selections/Invert
Maximise the image made earlier
Edit/Copy Edit/Paste into Selection
Adjust/Blur/Gaussian Blur as follows:



Effects/Plugins/Filters Unlimited 2.0/VM Extravaganza/Plastic Surgery as follows:



Selections/Select All

Step Ten:

Image/Add Borders/40 Pixels/White

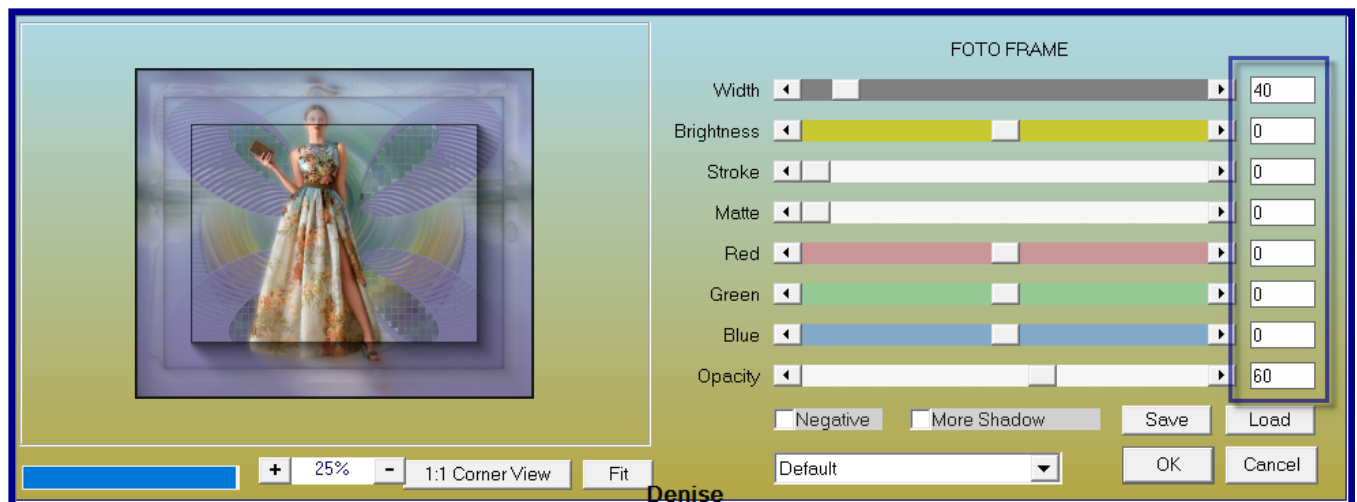
Selections/Invert

Edit/Paste into Selection (image should still be saved)

Adjust/Blur/Gaussian Blur

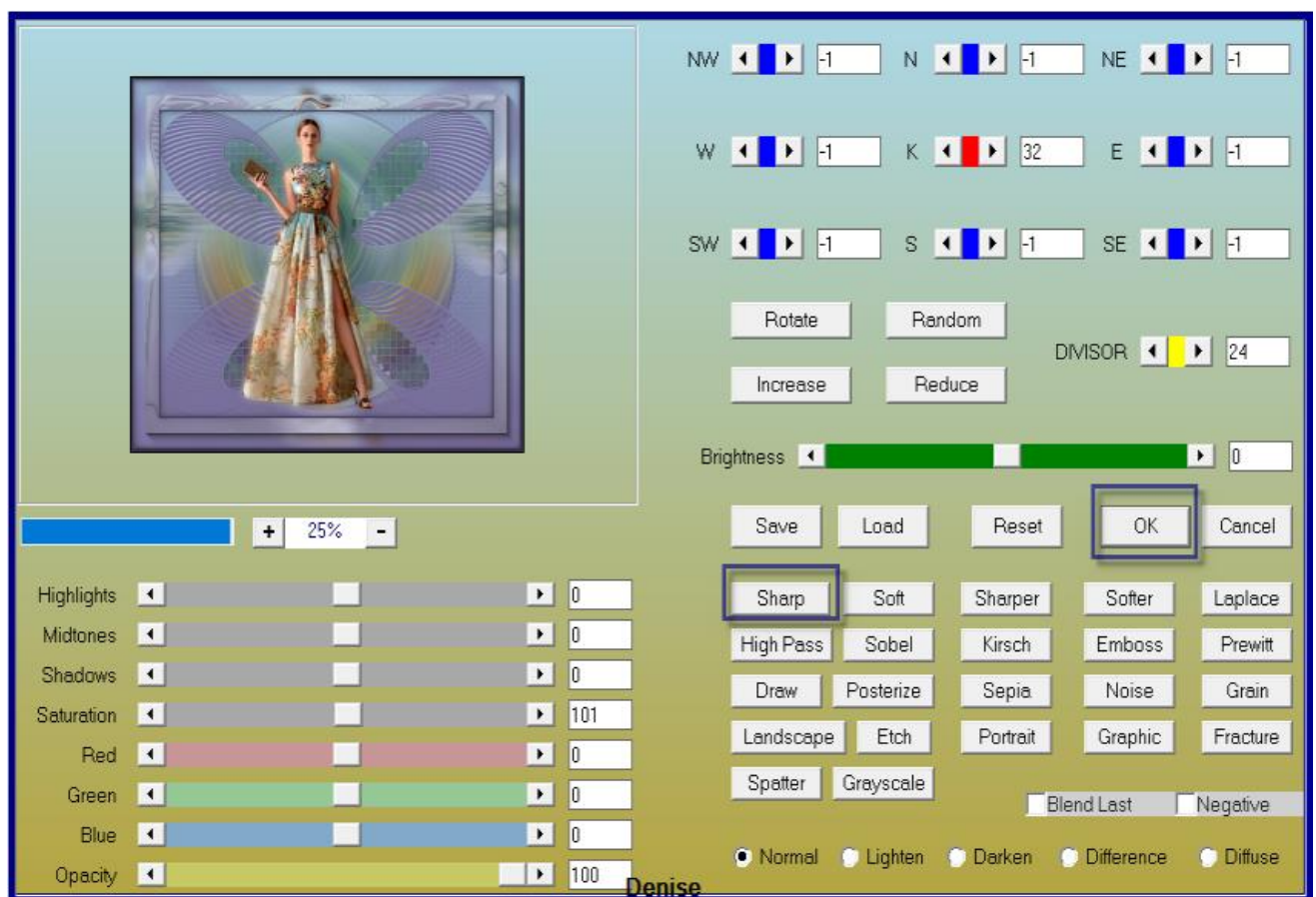
Selections/Select None

Effects/Plugins/AAA Frames/Foto Frame as follows:



Selections/Select All
Effects/3D Effects/Cutout
Selections/Select None
Image/Add Borders/5 pixels/#3c3850

Step Eleven:
This next step is optional
Effects/Plugins/AAA Filters/Custom/Sharp as follows:



Layers/New Raster Layer
Maximise Signature.png
Edit/Copy Edit/Paste as New Layer
Place at bottom of Layer
Add your Watermark
Layers/Merge All Flatten
Image/Resize/1000 pixels wide - height will adjust itself
File/Export/JPEG Optimiser/Compression Value 20

I hope you have enjoyed this tutorial
A big thank you to the ladies who test my Tutorials

TESTERS' RESULTS



BETTY



FRAN



SJOERTDJE



LILLIAN

Other Versions:



Other Groups:

<https://escapingtopsp2.blogspot.com/>