

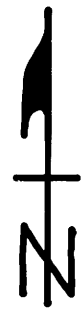
LOT 18, BLOCK P, TWIN LAKES SUB'D, NORTH PORTION, MB 1/52,
SE 1/4, SEC 32, T4N, R24E, MDB&M, MONO COUNTY, CALIFORNIA.

THIS MAP CORRECTLY REPRESENTS A SURVEY
MADE BY ME OR UNDER MY DIRECTION IN
CONFORMANCE WITH THE REQUIREMENTS OF
THE LAND SURVEYOR'S ACT AT THE REQUEST
OF LOU CAMERON IN OCTOBER, 1982.

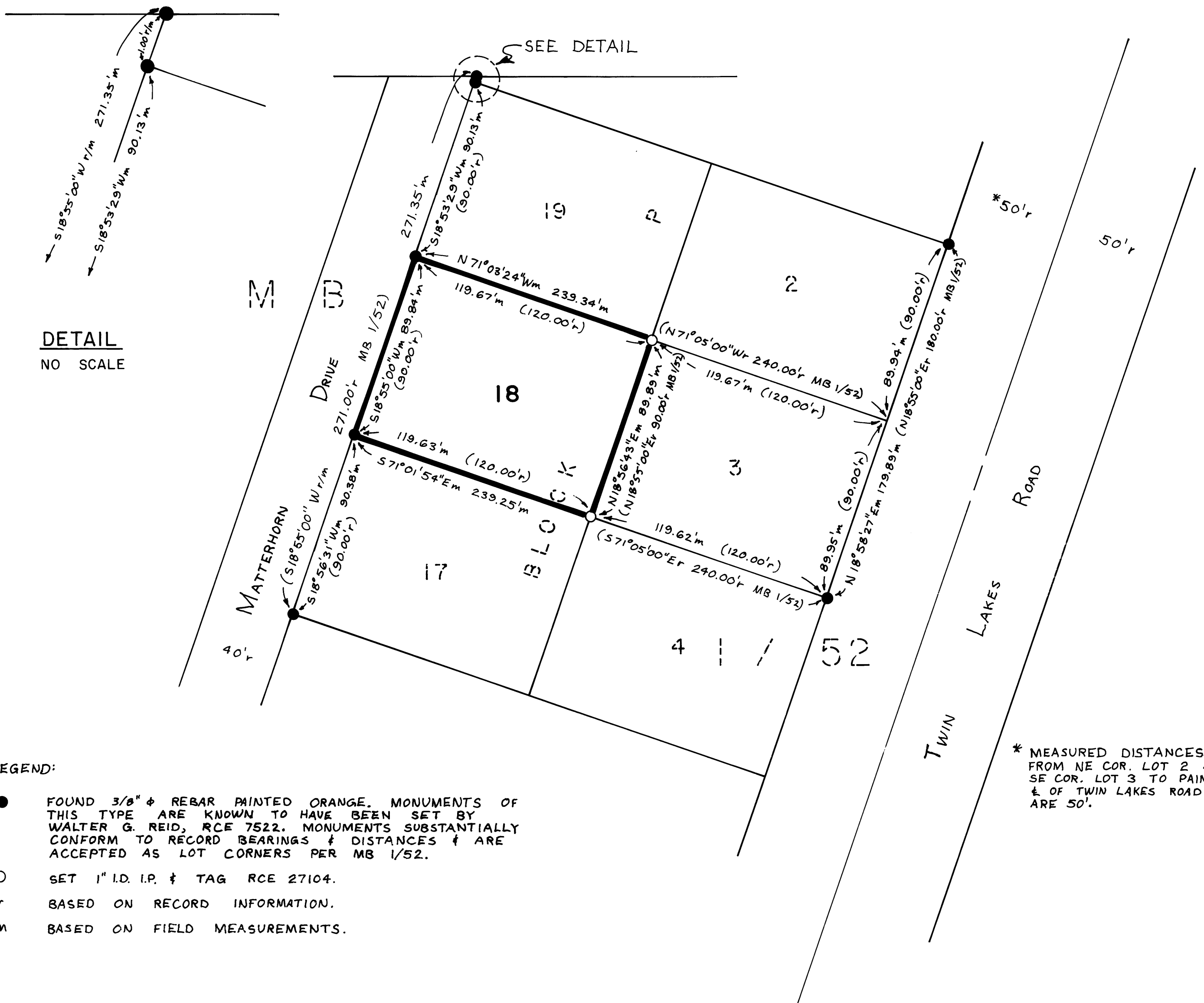
THIS MAP HAS BEEN EXAMINED FOR CONFORMANCE
WITH THE REQUIREMENTS OF THE LAND
SURVEYORS ACT THIS 23rd DAY OF MARCH,
1983.

FILED THIS 25th DAY OF MARCH, 1983,
AT 4:55 P.M. IN BOOK 1 OF 215 MAPS,
AT PAGE 91, AT THE REQUEST OF
LOU CAMERON.

KENN. McLAN
 COUNTY RECORDER,
 BY: Adam J. Bishop



SCALE: 1"= 40'



FOUND 3/8" ϕ REBAR PAINTED ORANGE. MONUMENTS OF THIS TYPE ARE KNOWN TO HAVE BEEN SET BY WALTER G. REID, RCE 7522. MONUMENTS SUBSTANTIALLY CONFORM TO RECORD BEARINGS & DISTANCES & ARE ACCEPTED AS LOT CORNERS PER MB 1/52.

○ SET 1" I.D. I.P. ‡ TAG RCE 27104.

BASED ON RECORD INFORMATION.

M BASED ON FIELD MEASUREMENTS.

* MEASURED DISTANCES
FROM NE COR. LOT 2 &
SE COR. LOT 3 TO PAINTED
& OF TWIN LAKES ROAD
ARE 50'.

BASIS OF BEARINGS: S 18° 55' 00" W, THE EASTERLY LINE OF MATTERHORN DRIVE AS SHOWN ON MB 1/52.

Dec 21