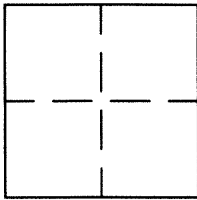


**CORNER RECORD**

APN No. \_\_\_\_\_ (Optional)

Document Number **CR 6409**Unincorporated Murray TownshipCounty of Alameda, CaliforniaBrief Legal Description In Christiansen Road, B-803-1**CORNER TYPE**

Government Corner ☐ Control ☐  
 Meander ☐ Property ☐  
 Rancho ☐ Other ☐  
 Date of Survey 06/23/2014

**COORDINATES (Optional)**

N. 2,111,710.9  
 E. 6,242,248.1  
 Zone 3 NAD27 ☐ NAD83 ☒  
 NAD 83 Epoch 2014.25  
 Elev. \_\_\_\_\_

Corner - Left as found ☐ Found and tagged ☐ Established ☐ Reestablished ☐ Not Found ☐

In compliance with Section 8771 of the Professional Land Surveyors' Act, this corner record is being filed to  
 ESTABLISH \_\_\_\_\_ / REESTABLISH ☒ the position of an existing monument PRIOR ☐ / SUBSEQUENT ☒  
 to street or highway reconstruction. (Use this portion only when applicable.)

Identification and type of corner found: Evidence used to identify or procedure used to establish or reestablish the corner:  
 Found buried non-standard monuments were exposed and straddled so that standard Alameda County monuments  
 could be set at the original monument locations. No prior corner record was filed. See Page 2.

A description of the physical condition of the monument as found and as set or reset: \_\_\_\_\_

The above coordinates are sufficient only for establishing the calculated record location for the subject monument.

**SURVEYOR'S STATEMENT**

This Corner Record was prepared by me or under my direction in conformance with  
 the Land Surveyors' Act on 8/27 20 14.

Signed Robert A. Machado L.S. or R.C.E. Number 7380

**COUNTY SURVEYOR'S STATEMENT**

This Corner Record was received 8-11 20 14 and examined  
 and filed 9-24 20 14.

Signed [Signature] Title County Surveyor



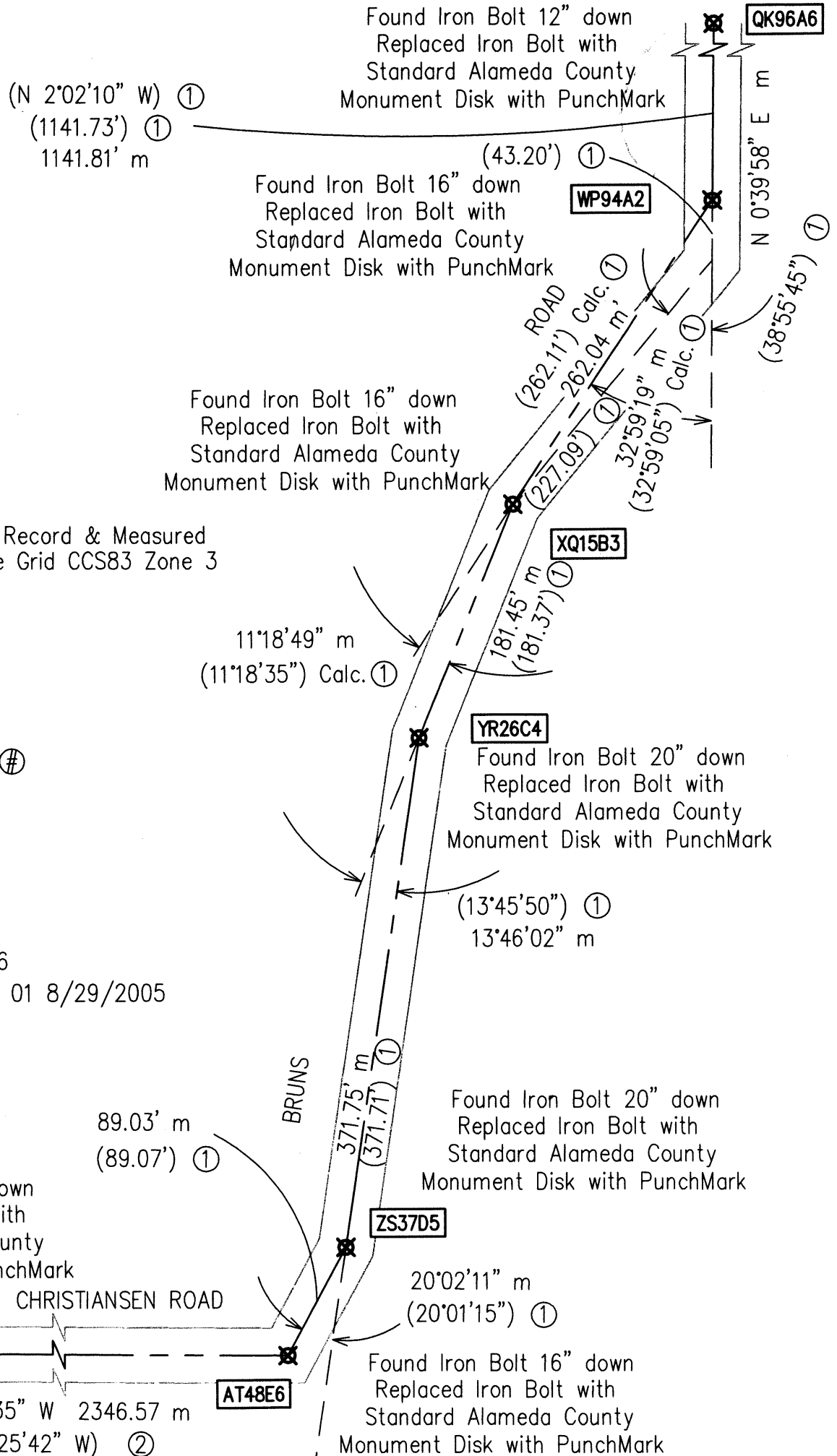
County Surveyor's Comment \_\_\_\_\_

Job Number: R 23417

Spec No: 2232



Scale: 1"=100'



#### Note:

Distances are Ground Record & Measured  
Measured Bearings are Grid CCS83 Zone 3  
Epoch 2014.25

#### LEGEND

- ⊗ As Noted
- ( ) Record Data Per #
- m Measured
- Calc. Calculated

#### REFERENCES

- ① B 803-1 9/1956
- ② R/S 1968 30 RS 01 8/29/2005