

PG 5  
MAP BK 326  
MAP 9393  
PARCEL MAP  
AMENDED

INTERSTATE HWY 580

FREISMAN ROAD (R/W 48') 3/4" IP OPEN



0 50 100 200 300  
Scale 1" = 100 ft

LEGEND

- BOUNDARY LINE
- ADJOINING PROPERTY LINE
- RELINQUISHMENT OF ABUTTERS RIGHTS
- EASEMENT LINE
- MONUMENT LINE
- CITY LIMIT LINE
- FOUND CITY MONUMENT
- CITY MONUMENT TO BE SET
- FOUND MONUMENT AS NOTED
- SET COTTON SPINDLE W/ 1/2" DIAMETER ALUMINUM WASHER STAMPED "PLS 7393"
- A.C.F.C.&W.C.D. ALAMEDA COUNTY FLOOD CONTROL & WATER CONSERVATION DISTRICT
- D.S.R.S.D. DUBLIN SAN RAMON SERVICES DISTRICT
- ESMT. EASEMENT
- I.O.D. IRREVOCABLE OFFER OF DEDICATION
- IP IRON PIPE
- LLA LOT LINE ADJUSTMENT
- M MAPS
- (M-M) MONUMENT TO MONUMENT
- O.R. OFFICIAL RECORD
- PG&E PACIFIC GAS & ELECTRIC
- PT&T PACIFIC TELEPHONE & TELEGRAPH
- PM PARCEL MAP
- RE: IM REEL: IMAGE
- (R) RADIAL BEARING
- RS RECORD OF SURVEY
- R/W RIGHT-OF-WAY
- S.F. SQUARE FEET
- W.L.E. WATER LINE EASEMENT

**BASIS OF BEARINGS:**  
THE BEARING OF NORTH 88° 33' 15" WEST OF THE SOUTHERLY LINE OF FREISMAN ROAD AS SHOWN ON THAT CERTAIN PARCEL MAP 9539 FILED IN BOOK 312 OF MAPS AT PAGE 46, ALAMEDA COUNTY RECORDS, WAS USED AS THE BASIS OF BEARINGS SHOWN UPON THIS MAP.

THE BEARINGS SHOWN ARE BASED UPON THE CALIFORNIA COORDINATE SYSTEM OF 1927 (CCS27, ZONE 3). MULTIPLY THE DISTANCES SHOWN BY 1.0000973 TO OBTAIN GROUND LEVEL DISTANCES. THE AREAS SHOWN ARE GRID MEASURE.

- REFERENCES:**
- (R1) PM 6332, 213 MAPS 6
  - (R2) PM 9539, 312 MAPS 46
  - (R3) RS 667, 12 RS 17
  - (R4) LLA 03-004, 2003342274 O.R.
  - (R5) EL CHARRO SPECIFIC PLAN, 2007337632 O.R., 2009118294 O.R., AND 2009179790 O.R.

AMENDED  
PARCEL MAP 9393

BEING A SUBDIVISION OF THE LANDS DESCRIBED IN THE GRANT DEEDS TO PARAGON OUTLETS LIVERMORE VALLEY LLC, RECORDED JULY 29, 2011, AS DOCUMENT NO. 2011218558, ALAMEDA COUNTY RECORDS, AND RECORDED AUGUST 8, 2012, AS DOCUMENT NO. 2012259625, ALAMEDA COUNTY RECORDS.

CITY OF LIVERMORE - ALAMEDA COUNTY - CALIFORNIA

AUGUST 2012

KIER & WRIGHT

CIVIL ENGINEERS & SURVEYORS, INC.  
2850 Collier Canyon Road Phone (925) 245-8788  
Livermore, California 94551 Fax (925) 245-8796

JOB NO. A01523-15

SHEET 2 OF 3 SHEETS

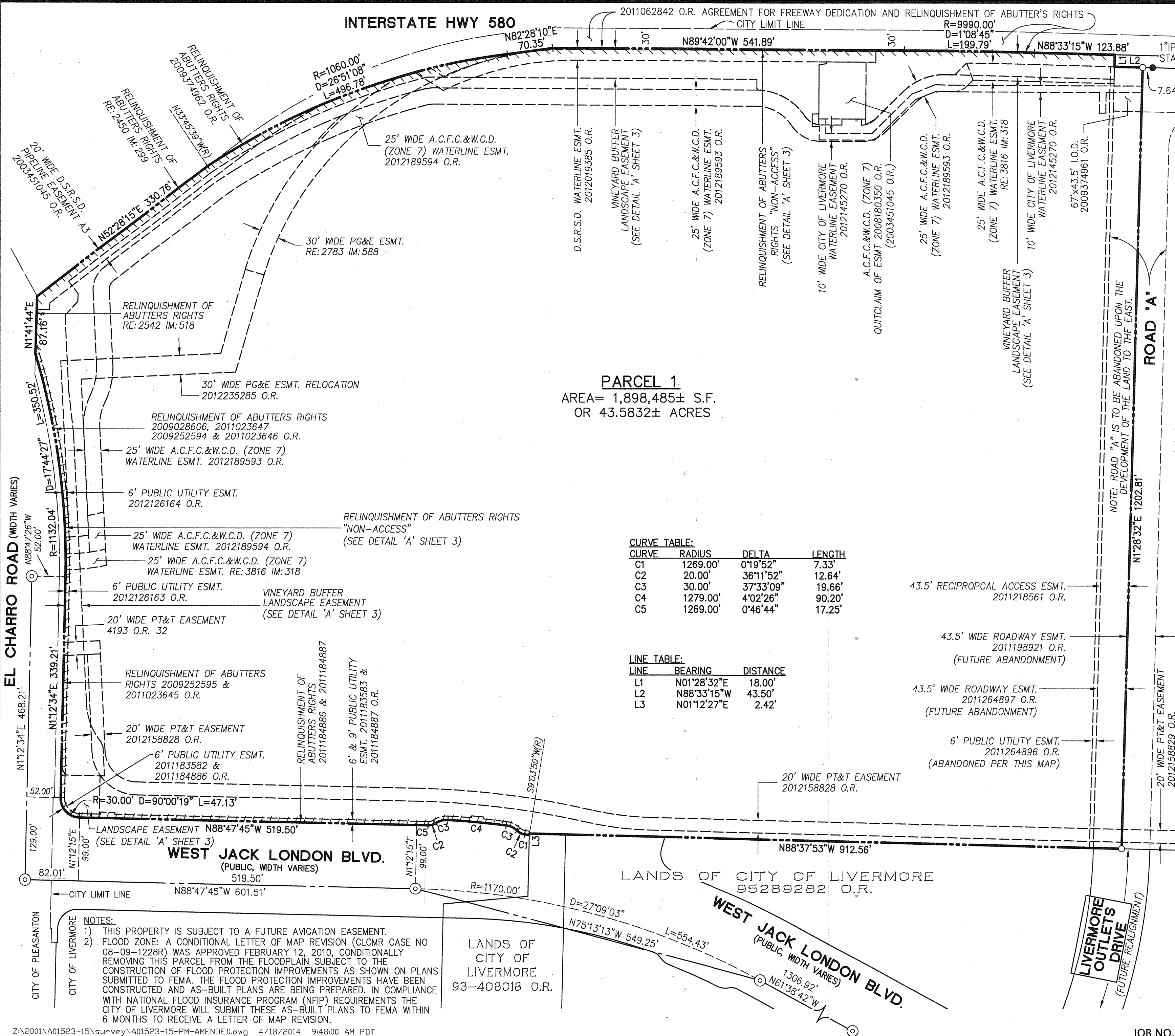
**PARCEL 1**  
AREA= 1,898,485± S.F.  
OR 43.5832± ACRES

**CURVE TABLE:**

CURVE	RADIUS	DELTA	LENGTH
C1	1269.00'	0°19'52"	7.33'
C2	20.00'	36°11'52"	12.64'
C3	30.00'	37°33'09"	19.66'
C4	1279.00'	4°02'26"	90.20'
C5	1269.00'	0°46'44"	17.25'

**LINE TABLE:**

LINE	BEARING	DISTANCE
L1	N01°28'32"E	18.00'
L2	N88°33'15"W	43.50'
L3	N01°12'27"E	2.42'



**NOTES:**

- THIS PROPERTY IS SUBJECT TO A FUTURE AVIGATION EASEMENT.
- FLOOD ZONE: A CONDITIONAL LETTER OF MAP REVISION (CLOMR CASE NO 08-09-1228R) WAS APPROVED FEBRUARY 12, 2010, CONDITIONALLY REMOVING THIS PARCEL FROM THE FLOODPLAIN SUBJECT TO THE CONSTRUCTION OF FLOOD PROTECTION IMPROVEMENTS AS SHOWN ON PLANS SUBMITTED TO FEMA. THE FLOOD PROTECTION IMPROVEMENTS HAVE BEEN CONSTRUCTED AND AS-BUILT PLANS ARE BEING PREPARED. IN COMPLIANCE WITH NATIONAL FLOOD INSURANCE PROGRAM (NFIP) REQUIREMENTS THE CITY OF LIVERMORE WILL SUBMIT THESE AS-BUILT PLANS TO FEMA WITHIN 6 MONTHS TO RECEIVE A LETTER OF MAP REVISION.