
**TECHNICAL MANUAL
ORGANIZATIONAL, DIRECT SUPPORT
AND GENERAL SUPPORT MAINTENANCE
REPAIR PARTS AND SPECIAL TOOLS LIST
(INCLUDING DEPOT MAINTENANCE REPAIR PARTS AND SPECIAL TOOLS)**

**PUMPING ASSEMBLY, FLAMMABLE LIQUID, BULK TRANSFER:
GASOLINE ENGINE DRIVEN; 350 GPM CAPACITY AT 190
FEETHEAD; WHEEL MOUNTED (GORMAN-RUPP MODEL 84C15-4A084)
NSN 4320-00-916-9172 and (BARNES MODEL US36ACG)
NSN 4320-00-407-2583**

**This copy is a reprint which includes current
pages from Changes I and 2.**

**HEADQUARTERS, DEPARTMENT OF THE ARMY
28 MAY 1982**

CHANGE

No. 2



HEADQUARTERS
DEPARTMENT OF THE ARMY
WASHINGTON, D.C., 30 September 1987

Organizational, Direct Support and General Support Maintenance
Repair Parts and Special Tools List
(Including Depot Maintenance Repair Parts and Special Tools)

PUMPING ASSEMBLY, FLAMMABLE LIQUID, BULK TRANSFER:
GASOLINE ENGINE DRIVEN; 350 GPM CAPACITY AT 190
FEETHEAD: WHEEL MOUNTED (GORMAN-RUPP MODEL 84C15-4A084)
NSN 4320-00-916-9172 and (BARNES MODEL US36ACG)
NSN 4320-00-407-2583

TM 5-4320-242-24P, 28 May 1982, is changed as follows:

1. Remove and insert pages as indicated below. New or changed text material is indicated by a vertical bar in the margin. An illustration change is indicated by a miniature pointing hand.

Remove pages
i and ii
19 and 20
51 and 52

Insert pages
i and ii
19 and 20
51 and 52

2. Retain this sheet in front of manual for reference purposes.

By Order of the Secretary of the Army:

OFFICIAL:

R. L. DILWORTH
Brigadier General, United States Army
The Adjutant General

CARL E. VUONO
General, United States Army
Chief of Staff

DISTRIBUTION:

To be distributed in accordance with DA Form 12-25A, Unit and Direct Support and General Support Maintenance requirements for Pump Assembly, Flammable Liquid, Bulk Transfer, Gas Driven, Wheel Mounted, 350GPM/190 FT Head (84C15-4A084) (US36ACG).

CHANGE

No. 1



HEADQUARTERS
DEPARTMENT OF THE ARMY
WASHINGTON, D.C., 6 December 1986

Organizational, Direct
Support and General Support Maintenance
Repair Parts and Special Tools List
(Including Depot Maintenance Repair Parts and Special Tools)

PUMPING ASSEMBLY, FLAMMABLE LIQUID, BULK TRANSFER:
GASOLINE ENGINE DRIVEN; 350 GPM CAPACITY AT 190
FEETHEAD: WHEEL MOUNTED (GORMAN-RUPP MODEL 84C15-4A084)
NSN 4320-00-916-9172 and (BARNES MODEL US36ACG)
NSN 4320-00-407-2583

TM 5-4320-242-24P, 28 May 1982, is changed as follows:

1. Remove and insert pages as indicated below. New or changed text material is indicated by a vertical bar in the margin. An illustration change is indicated by a miniature pointing hand.

Remove pages

17 through 20
31 and 32
45 and 46

Insert pages

17 through 20
31 and 32
45 and 46

2. Retain this sheet in front of manual for reference purposes.

By Order of the Secretary of the Army:

JOHN A. WICKHAM, JR.
General, United States Army
Chief of Staff

Official:

R. L. DILWORTH
Brigadier General, United States Army
The Adjutant General

DISTRIBUTION:

To be distributed in accordance with DA Form 12-25A, Organizational, Direct Support and General Support Maintenance Requirements for Pump Assembly, Flammable Liquid, Bulk Transfer, Gas Driven, Wheel Mounted, 350GPM/190 FT Head (84C15-4A084) (US36ACG)

ORGANIZATIONAL, DIRECT SUPPORT AND GENERAL SUPPORT
MAINTENANCE REPAIR PARTS AND SPECIAL TOOLS LIST
(INCLUDING DEPOT MAINTENANCE REPAIR PARTS
AND SPECIAL TOOLS)

**PUMPING ASSEMBLY, FLAMMABLE LIQUID, BULK TRANSFER:
GASOLINE ENGINE DRIVEN; 350 GPM CAPACITY AT 190 FEETHEAD;
WHEEL MOUNTED (GORMAN-RUPP MODEL 84 C1S-4A084)
NSN 4320-00-916-9172 and (BARNES MODEL US36ACG)
NSN 4320-00-407-2583**

REPORTING ERRORS AND RECOMMENDING IMPROVEMENTS

You can help improve this manual. If you find any mistake or if you know of a way to improve the procedures, please let us know. Mail your letter, DA Form 2028 (Recommended Changes to Publications and Blank Forms), or DA Form 2028-2 located in the back of this manual direct to: Commander, U.S. Army Troop Support Command, ATTN: AMSTR-MCTS, 4300 Goodfellow Boulevard, St. Louis, MO 63120-1798. A reply will be furnished directly to you.

TABLE OF CONTENTS

			Page	Illus Fig
Section	I.	INTRODUCTION	1	
Section	II.	REPAIR PARTS	8	
Group	01	ENGINE AND EXHAUST SYSTEM	8	
		Muffler and Attaching Parts	8	1
		Engine and Mounting Hardware	10	2
Group	02	FUEL SYSTEM	12	
		Tank, Fuel and Components.....	12	3
Group	03	BATTERY BOX AND CABLES	14	
		Battery Box and Cables	14	4
Group	04	CONTROL PANEL AND GAGES	16	
		Plates	16	5
		Control Panel and Gages.....	18	6
		Control Panel	20	7

***This manual supersedes TM 5-4320-242-24P, , 5 October 1972 Including all changes.**

TABLE OF CONTENTS - Continued

		Page	Illus Fig
Group 05	PUMP, STRAINER, GATE VALVE CHECK VALVE ASSY AND MANIFOLD	22	
	Gate Valve	22	8
	Gate Valve	24	9
	Check Valve	26	10
	Strainer.....	30	11
	Manifold	34	12
	Pump	36	13
Group 06	AIR ELIMINATOR	40	
	Air Eliminator	40	14
Group 07	WHEELS, AXLE, FRAME AND LIFTING COMPONENTS	42	
	Lifting Components	42	15
	Frame and Components	44	16
	Wheels and Axles.....	48	17
Section III.	SPECIAL TOOLS LIST (Not Applicable)		
Section IV.	NATIONAL STOCK NUMBER - PART NUMBER INDEX	51	

ORGANIZATIONAL, DIRECT SUPPORT, AND GENERAL SUPPORT
MAINTENANCE REPAIR PARTS AND SPECIAL TOOLS LIST
(INCLUDING DEPOT MAINTENANCE REPAIR PARTS AND SPECIAL TOOLS)

Section I. INTRODUCTION

1. Scope.

This manual lists spares and repair parts; special tools; special test, measurement, and diagnostic equipment (TMDE), and other special support equipment required for performance of organizational, direct support, general support, and depot maintenance of the pump assembly. It authorizes the requisitioning and issue of spares and repair parts as indicated by the source and maintenance codes.

2. General.

This Repair Parts and Special Tools List is divided into the following sections:

a. Section II. Repair Parts List. A list of spares and repair parts authorized for use in the performance of maintenance. The list also includes parts which must be removed for replacement of the authorized parts. Parts lists are composed of functional groups in numeric sequence, with the parts in each group listed in figure and item number sequence. Bulk materials are listed in NSN sequence.

b. Section III. Special Tools List. A list of special tools, special TMDE, and other special support equipment authorized for the performance of maintenance. (Not Applicable.)

c. Section IV. National Stock Number and Part Number Index. A list, in National item identification number (NIIN) sequence, of all National stock numbers (NSN) appearing in the listings, followed by a list in alphanumeric sequence of all part numbers appearing in the listings. National stock numbers and part numbers are cross-referenced to each illustration figure and item number appearance. This index is followed by a cross-reference list of reference designators to figure and item numbers.

3. Explanation of Columns.

a. Illustration. This column is divided as follows:

(1) Figure Number. Indicates the figure number of the illustration on which the item is shown.

(2) Item Number. The number used to identify item called out in the illustration.

b. Source, Maintenance, and Recoverability (SMR) Codes.

(1) Source Code. Source codes indicate the manner of acquiring support items for maintenance, repair, or overhaul of end items.

Source codes are entered in the first and second positions of the Uniform SMR Code format as follows:

Code	Definition
PA -	Item procured and stocked for anticipated or known usage.
PB -	Item procured and stocked for insurance purpose because essentiality dictates that a minimum quantity be available in the supply system.
PC -	Item procured and stocked and which otherwise would be coded PA except that it is deteriorative in nature.
PD -	Support item, excluding support equipment, procured for initial issue or outfitting and stocked only for subsequent or additional initial issues or outfittings. Not subject to automatic replenishment.
PE -	Support equipment procured and stocked for initial issue or outfitting to specified maintenance repair activities.
PF -	Support equipment which will not be stocked but which will be centrally procured on demand.
PG -	Item procured and stocked to provide for sustained support for the life of the equipment. It is applied to an item peculiar to the equipment which, because of probable discontinuance or shutdown of production-facilities, would prove uneconomical to reproduce at a later time.
KD -	An item of a depot overhaul/repair kit and not purchased separately. Depot kit defined as a kit that provides items required at the time of overhaul or repair.
KF -	An item of a maintenance kit and not purchased separately. Maintenance kit defined as a kit that provides an item that can be replaced at organizational or intermediate levels of maintenance.
KB -	Item included in both a depot overhaul/repair kit and a maintenance kit.
MO -	Item to be manufactured or fabricated at organizational level.
MF -	Item to be manufactured or fabricated at the direct support maintenance level.
MH -	Item to be manufactured or fabricated at the general support maintenance level.
MD -	Item to be manufactured or fabricated at the depot maintenance level.
AO -	Item to be assembled at organizational level.
AF -	Item to be assembled at direct support maintenance level.
AH -	Item to be assembled at general support maintenance level.
AD -	Item to be assembled at depot maintenance level.
XA -	Item is not procured or stocked because the requirements for the item will result in the replacement of the next higher assembly.
XB -	Item is not procured or stocked. If not available through salvage, requisition.
XC -	Installation drawing, diagram, instruction sheet, field service drawing, that is identified by manufacturer's part number.
XD -	A support item that is not stocked. When required, item will be procured through normal supply channels.

NOTE

Cannibalization or salvage may be used as a source of supply for any items coded above except those coded XA and support items as restricted by AR 700-42.

(2) Maintenance Code. Maintenance codes are assigned to indicate the levels of maintenance authorized to USE and REPAIR support items. The maintenance codes are entered in the third and fourth positions of the Uniform SMR Code format as follows:

(a) The maintenance code entered in the third position will indicate the lowest maintenance level authorized to remove, replace, and use the support item. The maintenance code entered in the third position will indicate one of the following levels of maintenance:

Code	Application/Explanation
C	- Crew or operator maintenance performed within organizational maintenance.
O	- Support item is removed, replaced, used at the organizational level.
F	- Support item is removed, replaced, used at the direct support level.
H	- Support item is removed, replaced, used at the general support level.
D	- Support items that are removed, replaced, used at depot, mobile depot, or specialized repair activity only.

(b) The maintenance code entered in the fourth position indicates whether the item is to be repaired and identifies the lowest maintenance level with the capability to perform complete repair (i.e., all authorized maintenance functions). This position will contain one of the following maintenance codes.

Code	Application/Explanation
O	- The lowest maintenance level capable of complete repair of the support item is the organizational level.
F	- The lowest maintenance level capable of complete repair of the support item is the direct support level.
H	- The lowest maintenance level capable of complete repair of the support item is the general support level.
D	- The lowest maintenance level capable of complete repair of the support item is the depot level.
L	- Repair restricted to designated, Specialized Repair Activity.
Z	- Nonreparable. No repair is authorized.

- B - No repair is authorized. The item may be reconditioned by adjusting, lubricating, etc., at the user level. No parts or special tools are procured for the maintenance of this item.

(3) Recoverability Code. Recoverability codes are assigned to support items to indicate the disposition action on unserviceable items. The recoverability code is entered in the fifth position of the Uniform SMR Code format as follows:

Recoverability Codes	Definition
Z -	Nonreparable item. When unserviceable, condemn and dispose at the level indicated in position 3.
O -	Reparable item. When uneconomically reparable, condemn and dispose at organizational level.
F -	Reparable item. When uneconomically reparable, condemn and dispose at the direct support level.
H -	Reparable item. When uneconomically reparable, condemn and dispose at the general support level.
D -	Reparable item. When beyond lower level repair capability, return to depot. Condemnation and disposal not authorized below depot level.
L -	Reparable item. Repair, condemnation, and disposal not authorized below depot/specialized repair activity level.
A -	Item requires special handling or condemnation procedures because of specific reasons (i.e., precious metal content, high dollar value, critical material or hazardous material). Refer to appropriate manuals/directives for specific instructions.

c. National Stock Number. Indicates the National stock number assigned to the item and which will be used for requisitioning.

d. Part Number. Indicates the primary number used by the manufacturer (individual, company, firm, corporation, or Government activity), which controls the design and characteristics of the item by means of its engineering drawings, specifications, standards, and inspection requirements to identify an item or range of items.

NOTE

When a stock numbered item is requisitioned, the item received may have a different part number than the part being replaced.

e. Federal Supply Code for Manufacturer (FSCM). The FSCM is a 5-digit numeric code listed in SB 708-42; which is used to identify the manufacturer, distributor, or Government agency, etc.

f. Description. Indicates the Federal item name and, if required, a minimum description to identify the item. (Items that are included in kits and sets are listed below the name of the kit or set with the quantity of each item in the kit or set indicated in the quantity incorporated in unit-column.)

g. Unit of Measure (U/M). Indicates the standard of the basic quantity of the listed item as used in performing the actual maintenance function. This measure is expressed by a two-character alphabetical abbreviation (e.g., ea, in, pr, etc). When the unit of measure differs from the unit of issue, the lowest unit of issue that will satisfy the required units of measure will be requisitioned.

h. Quantity Incorporated in Unit. Indicates the quantity of the item used in the breakout shown on the illustration figure, which is prepared for functional group, subfunctional group, or an assembly. A "V" appearing in this column in lieu of a quantity indicates that no specific quantity is applicable, (e.g., shims, spacers, etc).

4. Special Information.

a. Usable on codes are shown in the description column. Uncoded items are applicable to all models and/or serial number range. Identifications of the usable codes used in this publication are:

Code	Used On	
AGY	Gorman-Rupp	Model 84C15-4A084
BYJ	Barnes	Model US36ACG

b. Detailed assembly instructions for items source coded to be assembled are found in TM 5-4320-242-14 and assembly components are listed immediately following the item to be assembled.

c. Repair parts kits and gasket sets appear as the last entries in the repair parts listing for the figure in which its parts are listed as repair Darts.

d. The following publications pertain to the pump assembly and its components:

TM 5-4320-242-14	Operator, Organizational, Direct and General Support Maintenance Manual.
TM 5-2805-259-14	Operator, Organizational, Direct Support and General Support Maintenance Manual for MIL Standard Engine.
TM 5-2805-204-24P	Organizational, Direct Support and General Support Maintenance Repair Parts and Special Tools List, for MIL Standard Engine.

e. In the parts list, some items are indented to show that they are a component or components of the item under which they are indented.

5. How to Locate Repair Parts.

a. When National Stock Number or Part Number is Unknown:

(1) Using the table of contents determine the assembly group within which the repair part belongs. This is necessary since illustrations are prepared for assembly groups; and listings are divided into the same groups.

(2) Find the illustration covering the assembly group to which the repair part belongs.

(3) Identify the repair part on the illustration and note the illustration figure number and item number of the repair part.

(4) Using the repair parts listing, find the assembly group to which the repair part belongs and locate the illustration figure and item number noted on the illustration.

b. When National Stock Number or Part Number is Known:

(1) First. Using the Index of National Stock Numbers and Part Numbers, find the pertinent National stock number or part number. This index is in NIIN sequence followed by a list of part numbers in alphameric sequence, cross-referenced to the illustration figure number and item number.

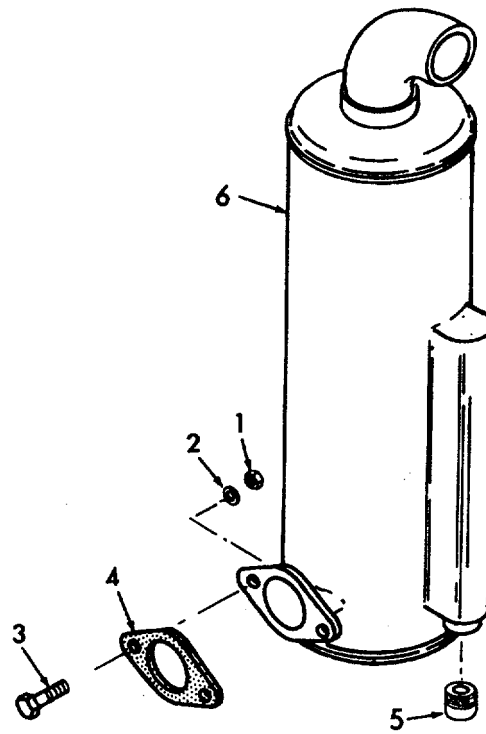
(2) Second. After finding the figure and item number, locate the figure and item number in the repair parts list.

6. Abbreviations.

Abbreviations

Explanation

CD	Cadmium
CE	Commutator End
HD	Head
HEX	Hexagon
IN.	Inch(es)
INSTR	Instrument
LG	Long
LH	Left Hand
MTG	Mounting
NO.	Number
OD	Outside Diameter
PLTD	Plated
RD	Round
RH	Right Hand
SPEC	Specification
SQ	Square
SST	Stainless Steel
THD	Thread
THK	Thick



TS 4320-242-24P/I

Figure 1. Muffler and Attaching Parts.

SECTION II

TM 5-4320-242-24P

(1) ILLUSTRATION		(2) SMR CODE	(3) NATIONAL STOCK NUMBER	(4) FSCM	(5) PART NUMBER	(6) DESCRIPTION USABLE ON CODE	(7) U/M	(8) QTY INC IN UNIT
(a) FIG NO.	(b) ITEM NO.							
						GROUP 01 ENGINE AND EXHAUST SYSTEM		
1	1	PAOZZ	5310-00-732-0558	96906	MS51967-8	NUT, PLAIN, HEXAGON. MUFFLER MTG	EA	2
1	2	PAOZZ	5310-00-637-9541	96906	MS35338-46	WASHER, LOCK, MUFFLER MTG.....	EA	2
1	3	PAOZZ	5305-00-269-3213	96906	MS9025-62	SCREW, CAP, HEXAGON, MUFFLER MTG	EA	2
1	4	PAOZZ	5330-00-066-2494	97403	13206E0642	GASKET, MANIFOLD TO MUFFLER	EA	1
1	5	PAOZZ		05748	37578	PLUG, PIPE.....	EA	1
1	6	PAOZZ	299-00-407-6393	97403	13214E6103	MUFFLER	EA	1
9								

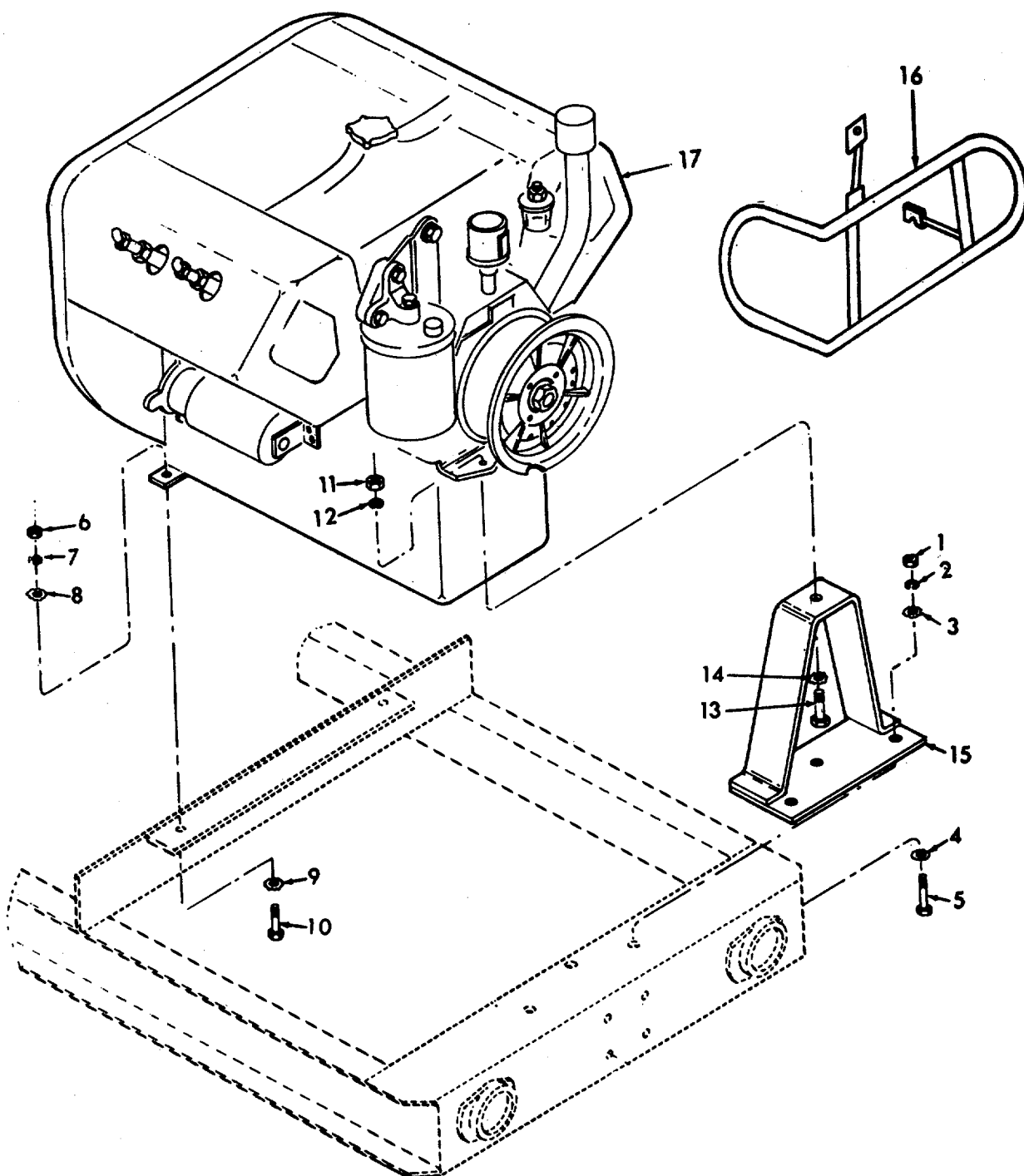


Figure 2. Engine and Mounting Hardware.

TS 4320-242-24P/2

SECTION II

TM 5-4320-242-24P

(1) ILLUSTRATION		(2)	(3)	(4)	(5)	(6) DESCRIPTION	(7)	(8)
(a) FIG NO.	(b) ITEM NO.	SMR CODE	NATIONAL STOCK NUMBER	FSCM	PART NUMBER	USABLE ON CODE	U/M	QTY INC IN UNIT
2	1	PAOZZ	5310-00-732-0558	96906	MS51967-8	NUT, PLAIN, HEXAGON, BRACKET MTG	EA	3
2	2	PAOIZ	5310-00-637-9541	96906	MS35338-46	WASHER, LOCK BRACKET MTG.....	EA	3
2	3	PAOZZ	5310-00-627-6128	96906	MS35335-35	WASHER, LOCK, BRACKET MTG.....	EA	3
2	4	PAOZZ	5310-00-627-6128	96906	MS35335-35N	ASHE, LOCK, BRACKET MTG.....	EA	3
2	5	PAOZZ	5305-00-269-3213	96906	MS90725-62	SCREW, CAP, HEXAGON, BRACKET MTG	EA	3
2	6	PAOZZ	5310-00-732-0558	96906	MS51196-8	NUTPLAIN, HEXAGON, ENGINE MTG	EA	2
2	7	PAOZZ	5310-00-6137-9541	96906	MS3338-46	WASHER, LOCK, ENGINE MTG.....	EA	2
2	8	PAOZZ	5310-00-627-6128	96906	MS35335-35	WASHER, LOCK, ENGINE MTG.....	EA	2
2	9	PAOZZ	5310-00-627-6128	96906	MS35335-35	WASHER, LOCK	EA	2
2	10	PAOZZ	5310-00-269-3213	96906	MS90725-62	SCREW, CAP, HEXAGON, ENGINE MTG	EA	2
2	11	PAOZZ	5310-00-768-0318	96906	MS51967-14	NUT, PLAIN, HEXAGON, ENGINE MTG	EA	1
2	12	PAOZZ		96906	MS35338-48	WASHER, LOCK, ENGINE MTG	EA	1
2	13	PAOZZ	5305-00-042-6417	96906	MS90725-113	SCREW, CAP, HEXAGON, ENGINE MTG	EA	1
2	14	PAOZZ	5310-00-209-5114	96906	MS35335-37	WASHER, LOCK, BRACKET TO ENGINE MTG	EA	1
2	15	XBFZZ		97403	13213E9827	BRACKET, ENGINE.....	EA	1
2	16	XBFZZ		97403	13216E8178	GUARD.....	EA	1
2	17	PAFHZ		81349	4A084-3	ENGINE, GASOLINE	EA	1

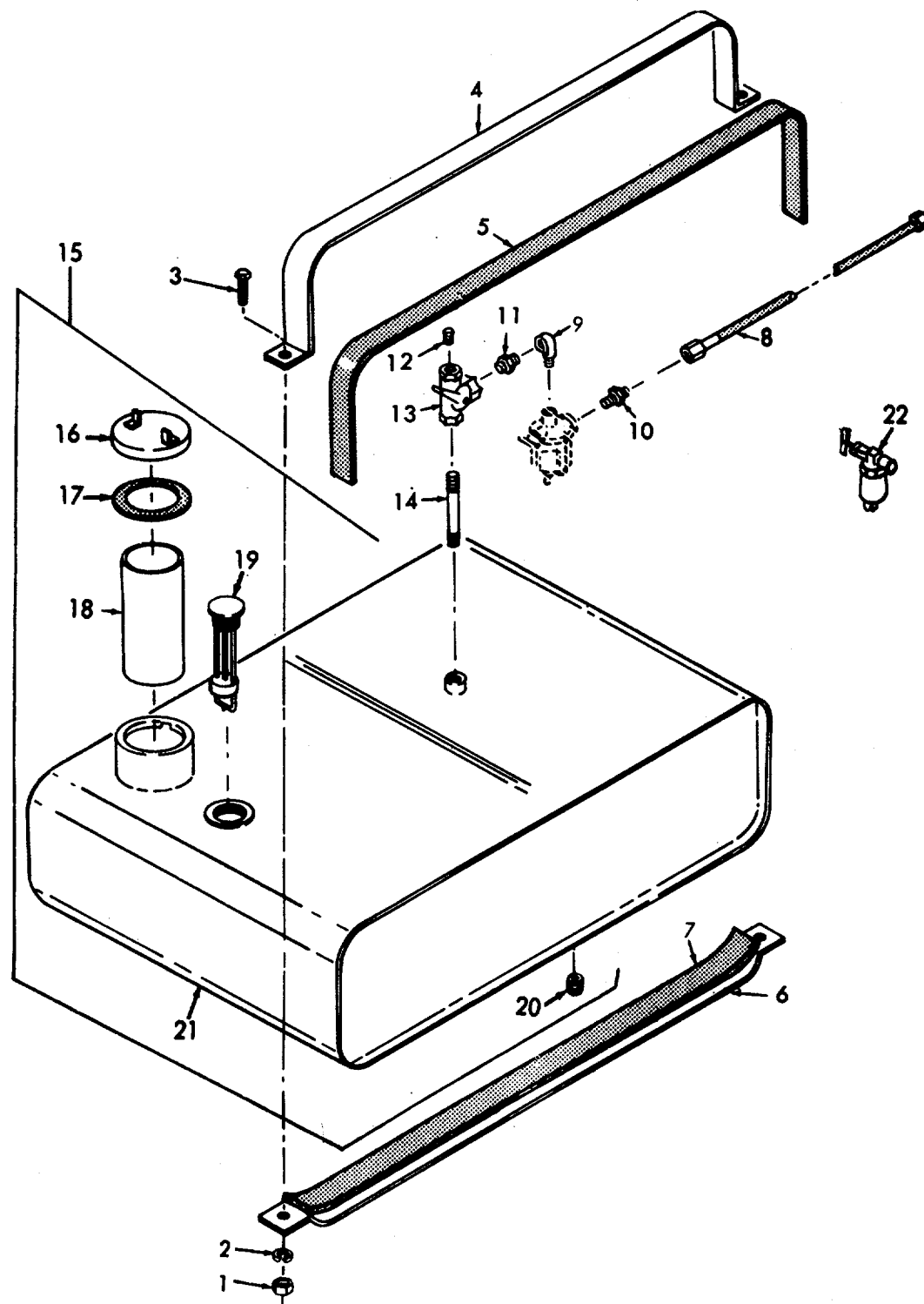


Figure 3. Tank, Fuel and Components.

TS 4320-242-24P/3

SECTION II

TM 11-4320-242-24P

(1) ILLUSTRATION		(2)	(3)	(4)	(5)	(6)	(7)	(8)	
(a) FIG NO.	(b) ITEM NO.	SMR CODE	NATIONAL STOCK NUMBER	FSCM	PART NUMBER	DESCRIPTION USABLE ON CODE	U/M	QTY INC IN UNIT	
						GROUP 02 FUEL SYSTEM			
3	1	PAOZZ	5310-00-732-0558	96906	MS5196-8	NUTPLAIN,HEXAGON,TANK STRAP HTG	EA	4	
3	2	PAOZZ	5310-00-637-9541	96906	MS35338-46	WASHER,LOCK STRAP	EA	4	
3	3	PAOZZ	5305-00-269-3213	96906	MS90725-62	SCREW,CAP,HEXAGON, TANK STRAP MOUNTING	EA	4	
3	4	XDOZZ		97403	13213E9822	STRAP,FUEL TANK UPPER	EA	2	
3	5	XAOZZ		97403	13213E9822-2	STRIP,RUBBER, GAS TANK MTG,UPPER	FT	V	
3	6	XDOZZ		97403	13213E9823	STRAP,BOTTOM.....	EA	2	
3	7	XAOZZ		97403	13213E9823-2	STRIP,RUBBER GAS TANK MTG.BOTTOM....	FT	V	
3	8	PAOZZ	4720-00-071-7967	81349	MIL-H-13444	HOSE ASSEMBLY,FUEL FILTER TO ENGINE, TYZ.25ID W/FTG 37 DEG FLARE STL CD PLD 1/2-20 UNF-2B BOTH ENDS.....	EA	1	
3	9	XBOZZ		25567	S2048	ELBOW, FUEL FILTER TO REDUCER	AGY	EA	1
3	10	XBOZZ		25561	S2049	CONNECTOR, FUEL FILTER TO HOSE ASSEMBLY.....	AGY	EA	1
3	11	XBOZZ		25567	S2047	REDUCER,NIPPLE, COCK TO ELBO	AGY	EA	1
3	12	XDOZZ	4730-00-136-1119	25567	P04	PLUG,PIPE, FUEL TANK COCK	AGY	EA	1
3	13	XBOZZ	4820-00-639-9224	96906	MS35932-2	COCK,PLUG, FUEL FILTER TO GAS TANK....	AGY	EA	1
3	14	XB0ZZ		25567	13053	NIPPLE,PIPE, TANK TO COCK	AGY	EA	1
3	15	PBFZH	2910-00-138-8274	35748	37396SA	FUEL TANK ASSEMBLY	EA	1	
3	16	PAOZZ	2910-00-141-9758	96906	MS35645-1	• CAP AND CHAIN	EA	1	
3	17	PAOZZ	5330-00-684-7851	96906	MS35643-1	• GASKET, FUEL TANK CAP	EA	1	
3	18	PAOZZ	2910-00-893-2592	6906	MS35644-1	• STRAINER,FUEL TANK.....	EA	1	
3	19	PAOZZ	6680-00-775-5779	97403	13213E9826	• GAGE,LEVEL	EA	1	
3	20	PAOZZ	4730-00-132-4625	25567	S2046	• PLUG,PIPE,. FUEL DRAIN(USED ON SERIAL RANGE 405143 THRU... 405365,415480 THRU 415493 2ND 419501 THRU 419959	AGY	EA	1
3	21	XAFZZ		97403	13213E9825	• TANK,FUEL	EA	1	
3	22	PAOZZ	2910-00-905-9792	96906	MS51086-1	• FILTER,FUEL	BYJ	EA	1

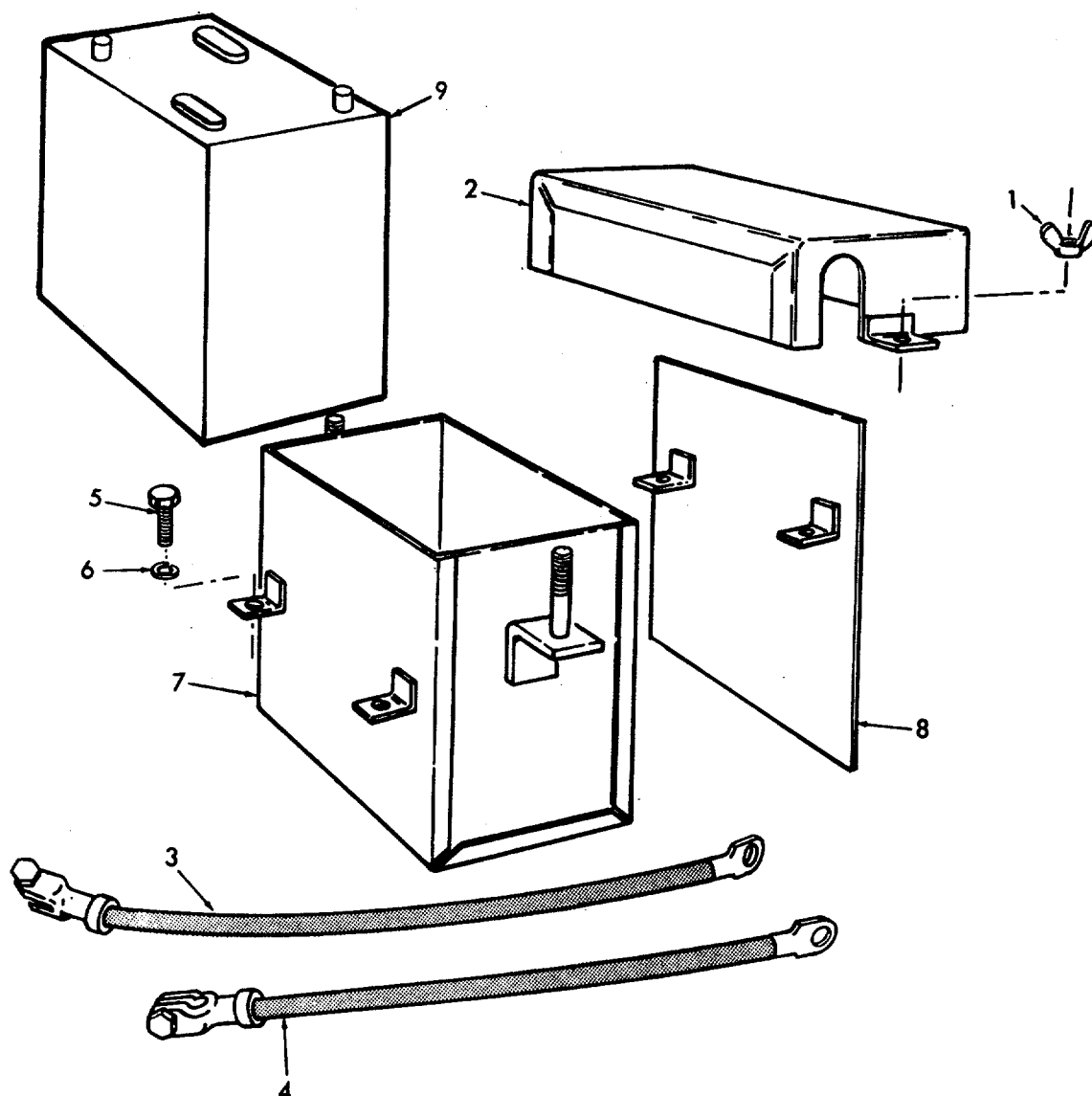
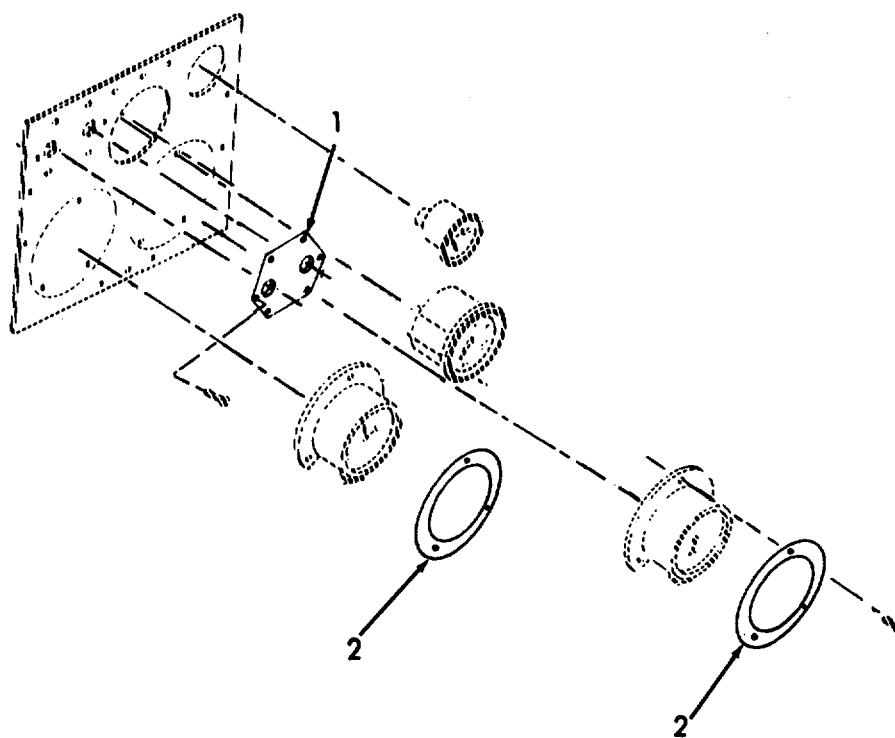


Figure 4. Battery Box and Cables.

SECTION II

TM 11-4320-242-24P

(1) ILLUSTRATION		(2)	(3)	(4)	(5)	(6)	(7)	(8)
(a) FIG NO.	(b) ITEM NO.	SMR CODE	NATIONAL STOCK NUMBER	FSCM	PART NUMBER	DESCRIPTION USABLE ON CODE	U/M	QTY INC IN UNIT
						GROUP 03 BATTERY BOX AND CABLES		
4	1	PAOZZ	5310-00-889-2606	96906	NS35425-42	NUT,WING	EA	2
4	2	PAOZZ	6140-00-134-O028	97403	13213E9832	COVER,BATTERY BOX.....	EA	1
4	3	PAOZZ	6140-00-935-2586	97403	13213E9854-2	CABLE,NEGATIVE	EA	1
4	4	PAOZZ	6140-00-935-2585	9403	132L3E9854-1	CABLEB POSITIVE.....	EA	1
4	5	PAOZZ	5305-00-068-0502	96906	NS90725-6	SCRENCAP,HEXAGON.....	EA	4
4	6	PAOZZ	5310-00-582-5965	96906	NS353381-	WASHER LOCK	EA	4
4	7	PAOZZ		97403	13213E9829	BOX BATTERY	EA	1
4	8	PAOZZ		97403	13213E9864	SHIELD BATTERY	EA	1
4	9	PAOZZ	6140-00-059-3528	96906	MS75047-1	BATTERY,STORAGE	EA	1
15								



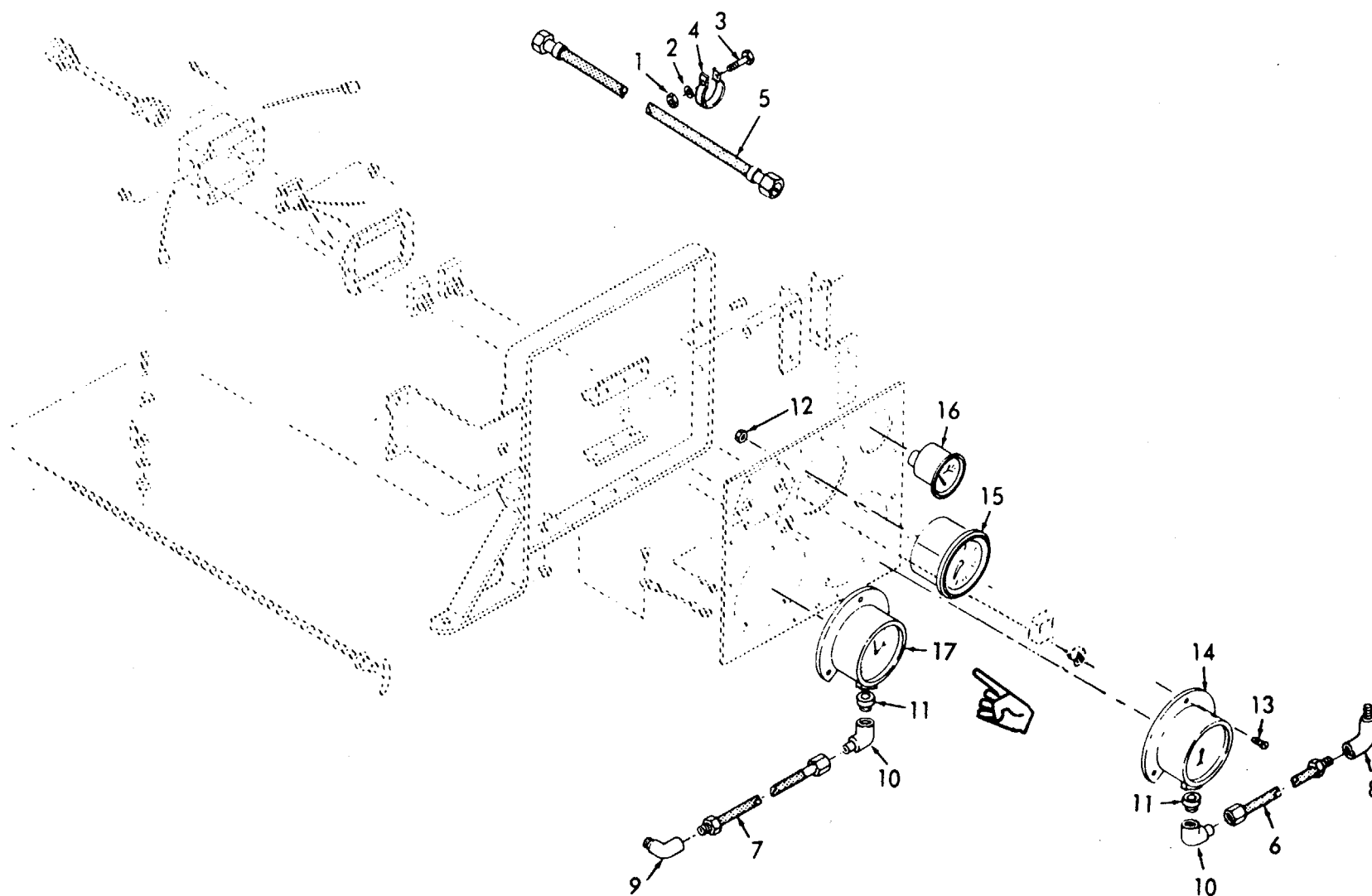
TS 4320-242-24P/5

Figure 5. Plates.

SECTION II

TM 11-4320-242-24P

(1) ILLUSTRATION		(2)	(3)	(4)	(5)	(6)	(7)	(8)
(a) FIG NO.	(b) ITEM NO.	SMR CODE	NATIONAL STOCK NUMBER	FSCM	PART NUMBER	DESCRIPTION USABLE ON CODE	U/M	QTY INC IN UNIT
5	1	XBOZZ		97403	13213E9859	GROUP 04 CONTROL PANEL AND GAGES PLATE.IDENTIFICATION.....	EA	1
5	2	XBFZZ		97403	13213E9861	PLATE,IDENTIFICATION.....	EA	1
17								



TS 4320-242-24P/6

Figure 6. Control Panel and Gages.

Change 1 18

SECTION II

TM 11-4320-242-24P

(1) ILLUSTRATION		(2)	(3)	(4)	(5)	(6)	(7)	(8)
(a) FIG NO.	(b) ITEM NO.	SMR CODE	NATIONAL STOCK NUMBER	FSCM	PART NUMBER	DESCRIPTION USABLE ON CODE	U/M	QTY INC IN UNIT
6	1	PAZZ	5310-00-761-6882	96906	MS91967-2	NUT, PLAIN, HEXAGONTACHOMETER CABLE CLAMP	EA	1
6	2	XDOZZ	5310-00-582-5965	96906	MS35338-44	WASHER,LOCK, TACHOMETER CABLE CLAMP	EA	1
6	3	PAOZZ	5305-00-068-0502	96906	MS90T25-6	SCREW,CAP,HEXAGON, TACHOMETER CABLE CLAMP	EA	1
6	4	PAOZZ		96906	MS9350-10	CLAMP TACHOMETER CABLE MTG.....	EA	1
6	5	X8OZZ		96906	MS51071-9	CABLE, TACHOMETER..... AGY	EA	1
6	6	PAOZZ		91349	MIL-H-13444	HOSE ASSEMBLY,SUCTION GAUGE	EA	1
6	7	PAOZZ	4720-00-570-7788	81349	MIL-H-13444	HOSE ASSEMBLY, PRESSURE GAUGE	EA	1
6	8	XBOZZ	4730-00-639-9730	07334	A0563	ELBOW.PIPE,GAUGE HOSE ASSEMBLY	EA	1
6	9	XBOZZ	4730-00-249-3932	96906	A14278-2	ELBOW.PIPE.GAUGE HOSE ASSEMBLY	EA	1
6	10	PAOZZ	4370-01-049-0746	81343	54-07203 BRASS....	ELBOW GAUGES TO HOSE ASSEMBLIES	EA	2
6	11	PAOZZ	6685-00-130-3947	81349	MIL-D-2940	DAMPENER,GAUGE	EA	2
6	12	PAOZZ	5310-00-877-5797	96906	MS21044N3	NUT,SELF-LOCKING GAUGES AND ELASTOMERIC MTG.....	EA	26
6	13	PAOZZ	5305-00-995-3444	96906	MS35207-266	SCREW.MACHINE, GAUGES AND ELASTOMERIC MTG	EA	25
6	14	PAOZZ	6685-00-566-8856	80204	USAS-804.1	GAUGE PUMP	EA	1
6	15	PAOZZ	6680 00-956-2598	96906	MS35916-1	TACHOMETER, MECHANICAL.....	EA	1
6	16	PAOZZ	6620-00-938-8212	96906	MS24541-2	GAUGE.OIL PRESSURE	EA	1
6	17	PAOZZ	6685-00-934-7953	38508	H1254	GAUGE, PRESSURE.....	EA	1
Change 2 19								

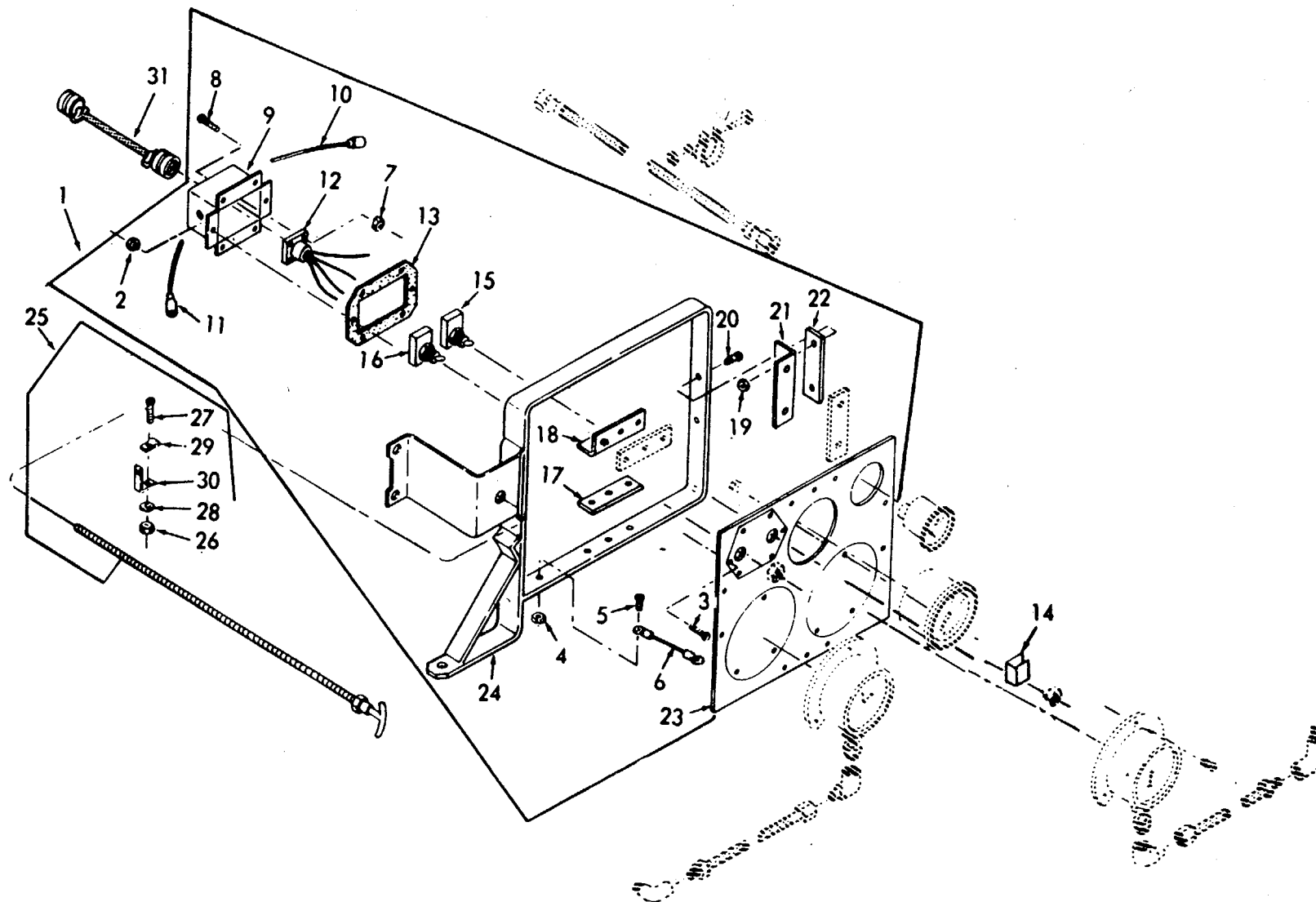


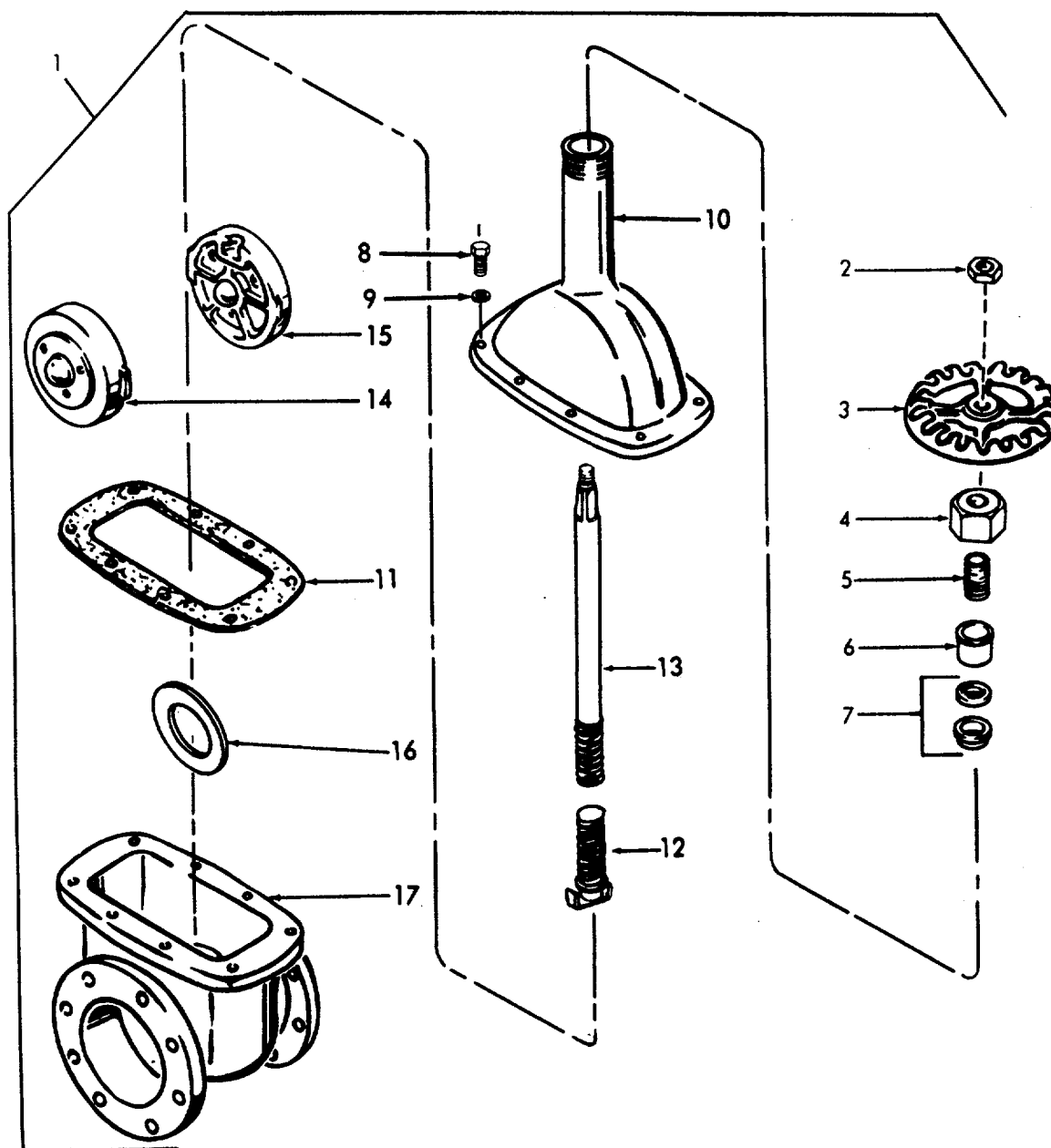
Figure 7. Control Panel.

TS 4320-242-24P/7

SECTION II

TM 11-4320-242-24P

(1) ILLUSTRATION		(2)	(3)	(4)	(5)	(6) DESCRIPTION	(7)	(8)
(a) FIG NO.	(b) ITEM NO.	SMR CODE	NATIONAL STOCK NUMBER	FSCM	PART NUMBER	USABLE ON CODE	U/M	QTY INC IN UNIT
7	1	XDOZZ	4320-00-138-8161	97403	13213E9848	PANEL ASSEMBLY,CONTROL.....	EA	1
7	2	PAOZZ	5310-00-811-3494	96906	MS21044NN08	• NUT,SELF-LOCKINGCONNECTOR BOX MTG	EA	6
7	3	PAOZZ	5305-00-984-6194	96906	MS35206-246	• SCREW,MACHINE CONNECTOR BOX MTG	EA	6
7	4	PAOZZ	5310-00-811-3494	96906	MS21044NO8	• NUT,SELF-LOCKING,GROUNDING JUMPER	EA	2
7	5	PAOZZ	5305-00-984-6194	96906	MS35206-246	• SCREWMACHINE, GROUNDING JUNPER MTG	EA	2
7	6	XBOZZ		96906	MS25083-2B6	JUMPER, GROUND.....	EA	1
7	7	PAOZZ	5310-00-877-5797	96906	MS21044N3	NUT,SELF-LOCKING,CONNECTOR MTG	EA	4
7	8	PAOZZ	5305-00-889-2999	96906	MS35206-217	SCREWMACHINE, CONNECTOR MTG.....	EA	4
7	9	XAOZZ		97403	13213E9850	• BOX, CONNECTOR	EA	1
7	10	XBOZZ	5935-00-184-6707	96906	MS27144-3	• CONNECTOR, PLUG	EA	1
7	11	XBOZZ	5935-00-167-7775	96906	MS27144-1	• CONNECTOR,PLUG	EA	1
7	12	PAOZZ	5935-00-813-4364	96906	MS3102R18-1S	• CONNECTOR.....	EA	1
7	13	PAOZZ	5330-00-161-0758	97403	13213E9863	• GASKET,BOX.....	EA	1
7	14	XBOZZ	5390-00-138-4997	97403	13216E8179	• PROTECTOR SWITCH.....	EA	1
7	15	PAOZZ	5930-00-655-1522	96906	MS35058-30	• SWITCH,TOGGLE.....	EA	1
7	16	PAOZZ	5930-00-615-9376	96906	MS35059-21	• SWITCH,TOGGLE.....	EA	1
7	17	XBOZZ	5340-01-038-3806	97403	13213E9852-1	• PLATE, MENDING,3 HOLE.....	EA	4
7	18	XBOZZ	5330-01-005-4123	05748	37501	• RUBBER STRIP.....	EA	2
7	19	PAOZZ	5310-00-877-5797	96906	MS210S44N3	• NUT,SELF-LOCKING,STRIPS MTG.....	EA	20
7	20	PAOZZ	5305-00-989-7435	96906	MS35207-264	• SCREWMACHINE, STRIPS MTG	EA	20
7	21	XB0ZZ	5340-01-005-4124	05748	37502	• PAD,NOUNTING, ELASTOMERIC MATL,GR. 2BG615B14E34F17 RBR,SYNTH, W/2 PLY 10 02NYLON INSERT X 2.72 L	EA	2
7	22	XBOZZ	5340-01-045-5832	97403	13213E9852-2	• PLATE,MENDING,2 HOLE.....	EA	4
7	23	XBFZZ		97403	13213E9851	• PANEL, CONTROL.....	EA	1
7	24	XBFZZ		97403	13213E9847	• MOUNTING, PANEL	EA	1
7	25	PAOZZ	2990-00-138-8263	97403	13213E9853	• CABLE,TIROTTLT	EA-	1
7	26	PAOZZ	5310-00-934-9758	96906	MS35649-202	•• NUT,PLAIN,HEXAGON CLAMP TO BRACKET	EA	1
7	27	PAOZZ	5305-00-984-6210	96906	MS35206-263	•• SCREWMACHINE, THROTTLE CLIP	EA	1
7	28	PADZZ	5310-00-045-3296	96906	MS35338-43	•• WASHER,LOCK,CLAMP TO BRACKET	EA	1
7	29	XBOZZ		05748	37519	•• CLAMP, THROTTLE CABLE.....	EA	1
7	30	XBOZZ		05748	37518	•• BRACKET,END	EA	1
7	31	XBOZZ		97403	13213E9856	CABLE ASSEMBLY, PANEL TO ENGINE.....	EA	1



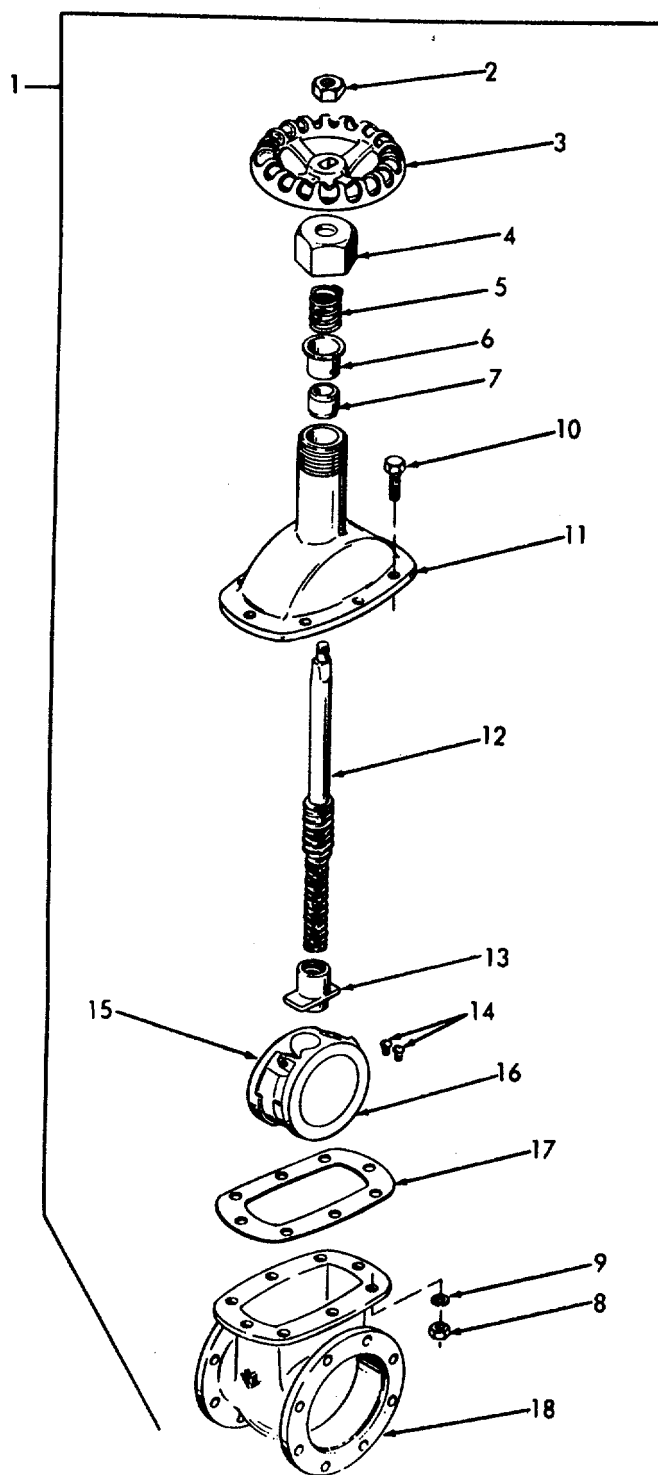
TS 4320-242-24P/8

Figure 8. Gate Valve.

SECTION II

TM 11-4320-242-24P

(1) ILLUSTRATION		(2)	(3)	(4)	(5)	(6)	(7)	(8)
(a) FIG NO.	(b) ITEM NO.	SMR CODE	NATIONAL STOCK NUMBER	FSCM	PART NUMBER	DESCRIPTION USABLE ON CODE	U/M	QTY INC IN UNIT
						GROUP 05 PUMP* STRAINER, GATE VALVE CHECK VALVE ASSY AND MANIFOLD		
8	1	PAFZZ	4820-00-950-7687	81718	676	VALVE ASSEMBLY, GATE	EA	4
8	2	PAFZZ	5310-01-007-6896	81718	H9594	WNUT, HANDHEEL	EA	1
8	3	PAFZZ	4820-00-98S-1981	81718	C74A	HANDHEEL	EA	1
8	4	PAFZZ	4730-00-186-1982	81718	H665	NT PACKING	EA	1
8	5	XBFZ	5360-00-986-1987	81T18	H669t	SPRING, HELICAL	EA	1
8	6	XBFZZ		81718	H666R8	RETAINER, PACKING	EA	1
8	7	PAFZZ	5330-00-779-2357	81718	H667M	PACKING SET	EA	1
8	8	PAFZZ	5305-00-139-0215	81718	H643H	SCREW, CAP, HEXAGON, BONNET TO BODY	EA	8
8	9	XBFZZ		81718	H252S	WASHER, LOCK, BONNET TO BODY	EA	8
8	10	XAFZZ		81718	D1TA	BONNET, VALVE	EA	1
8	11	PAFZZ	5330-00-785-0693	81718	C75N	GASKET	EA	1
8	12	XBFZZ	4930-00-896-7073	81718	C738	STEM, DISK	EA	1
8	13	X8FZZ	4930-00-718-9956	81118	C72RB	•STEM, VALVE	EA	1
8	14	XAFZZ		81718	D18M	•DISK VALVE	EA	1
8	15	XAFZZ		81718	D19t	•DISK, FEHALE	EA	1
8	16	XAFZZ		81718	H66RB	•SEAT	EA	2
8	17	XAFZZ		81718	E2A	•BODY, VALVE	EA	1
					23			



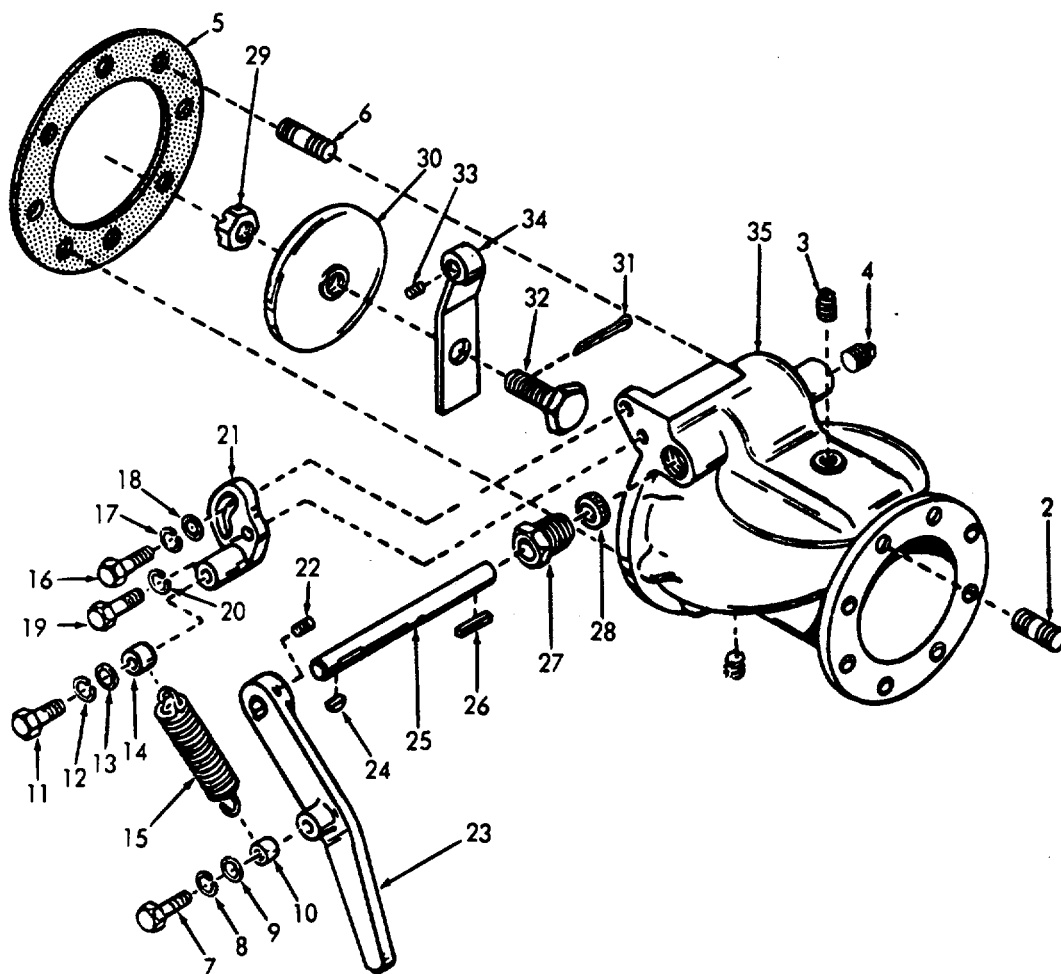
TS 4320-242-24P/9

Figure 9. Gate Valve.

SECTION II

TM 11-4320-242-24P

(1) ILLUSTRATION		(2)	(3)	(4)	(5)	(6)	(7)	(8)
(a) FIG NO.	(b) ITEM NO.	SMR CODE	NATIONAL STOCK NUMBER	FSCM	PART NUMBER	DESCRIPTION USABLE ON CODE	U/M	QTY INC IN UNIT
9	1	XBFZZ	5330-00-400-3569 5310-00-891-1751 5310-00'637-9541 5305-00-29-2805	76364	C35759	GATE VALVE ASSEMBLY SUCTION AND DISCHARGE (USED ON SERIAL RANGE 419501 THRU 4199591 AGY	EA	4
9	2	XBFZZ		16364	31112H	•NUT,PLAIN,HEXAGON, HANDWHEEL..... AGY	EA	1
9	3	XAFZZ		76364	76112	•HANDWHEEL,STEM AGY	EA	1
9	4	XAFZZ		76364	2855N	•NUT,PACKING AGY	EA	4
9	5	XAFZZ		76364	710t2N	•SPRINGP,PACKING AGY	EA	1
9	6	XAFZZ		16364	3673N	•RETAINER,PACKING AGY	EA	1
9	7	PAFZZ		76364	65107U	•PACKING,STEM..... AGY	EA	1
9	8	PAFZZ		96906	MS35691-22	•NUT,PLAIN,HEXAGON BONNET TO BODY ... AGY	EA	8
9	9	PAFZZ		16906	MS535338-46	•WASHER,LOCK,BONNET TO BODY AGY	EA	8
9	10	PAFZZ		96906	MS90726-62	•SCREEN CAP HEXAGON,BONNET TO BODY AGY	EA	8
9	11	XAFZZ		76364	23258N	•BONNET,VALVE..... AGY	EA	1
9	12	XAFZZ		76364	26408	•STEM,VALVE AGY	EA	1
9	13	XAFZZ		16364	3042N	•NUT,PULL, STEM..... AGY	EA	1
9	14	XAFZZ		76364	4253E	•SCREWMACHINE WEDGE AGY	EA	2
9	15	XAFZZ		16364	437N	•WEDGE,VALVE, MALE AGY	EA	1
9	16	XAFZZ		76364	438N	•WEDGE,VALVE, FEMALE AGY	EA	1
9	17	XFZZ		76364	6686N	•GASKET TO BODY AGY	EA	1
9	18	XAFZZ		76364	2093N	•BODY,VALVE AGY	EA	4



TS 4320-242-24P/10

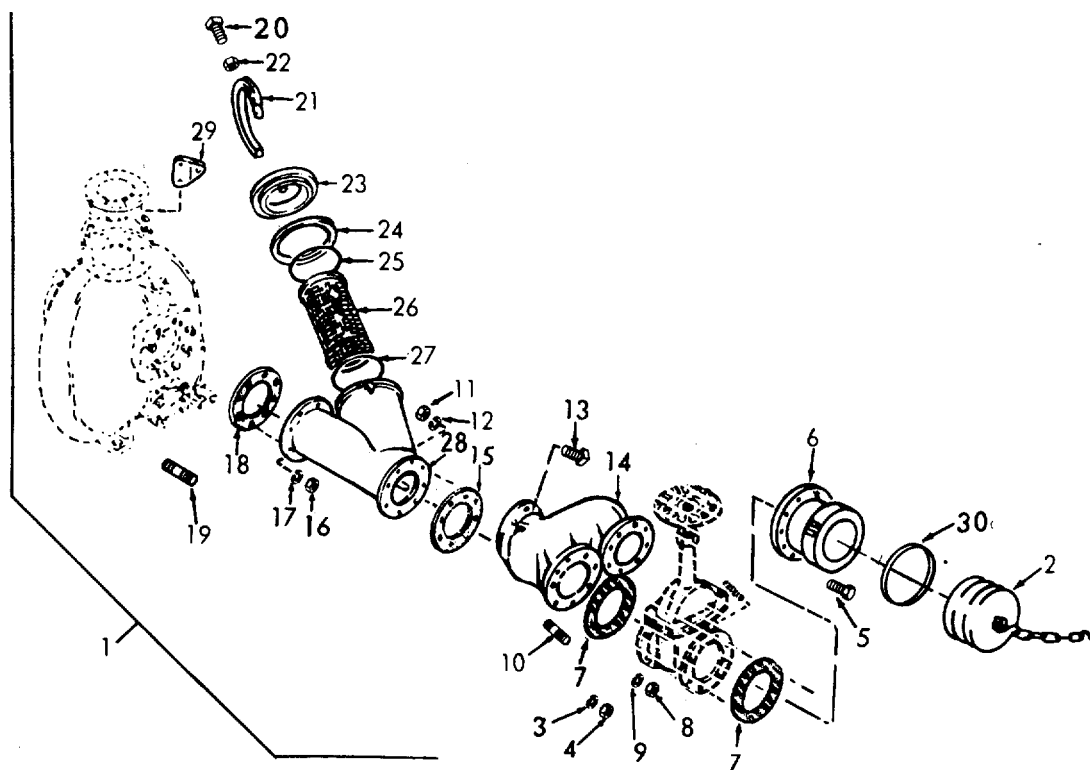
Figure 10. Check Valve.

SECTION II

TM 11-4320-242-24P

(1) ILLUSTRATION		(2)	(3)	(4)	(5)	(6)	(7)	(8)
(a) FIG NO.	(b) ITEM NO.	SMR CODE	NATIONAL STOCK NUMBER	FSCM	PART NUMBER	DESCRIPTION USABLE ON CODE	U/M	QTY INC IN UNIT
10	1	XBOZO	4820-00-563-8018	25567	D5361	CHECK VALVE AGY	EA	1
10	1	PADZZ	4820-01-004-8464	05748	37459SA	CHECK VALVE BYJ	EA	1
10	2	PAOZZ	5307-00-360-0720	25567	C0606	STUD,PLAIN,ELBOW MTG..... AGY	EA	8
10	2	PAOZZ	5307-00-140-8149	05748	02417	•STUD..... BYJ	EA	8
10	3	XDOZZ	4730-00-136-1119	25567	P04	•PLUG,PIPE, VALVE BODY AGY	EA	2
10	3	XBOZZ	4730-01-005-2402	05748	03217	•PLUG,PIPE BYJ	EA	2
10	4	PAOZZ	4730-00-010-3867	25567	P06	•PLUG,PIPE, SHAFT HOLE AGY	EA	1
10	4	PAOZZ	4730-01-004-5105	05748	15000	•PLUG,PIPE, SHAFT HOLE BYJ	EA	1
10	5	PAOZZ	5330-00-690-0672	25567	5371G8	•GASKET, CHECK VALVE EA	EA	1
10	6	XDFZZ	5307-00-725-0296	25567	C0607	•STUD,PLAIN, CHECK VALVE MTG EA	EA	8
10	7	PAOZZ	5305-00-269-3214	96906	MS90725-64	•SCREW,CAP,HEXAGON, SPRING MTG EA	EA	1
10	8	PAOZZ	5310-00-637-9541	96906	MS35338-46	•WASHER,LOCK, TENSION SPRING EA	EA	1
10	9	PAOZZ	5310-00-080-6004	96906	MS27183-14	•WASHER,FLAT, TENSION SPRING EA	EA	1
10	10	XBOZZ		25567	3855	•SPACER,SLEEVE, TENSION SPRING EA	EA	1
10	11	PAOZZ	5305-00-269-3214	16906	MS90725-64	•SCREW,CAP,HEXAGON, SPRING MTG EA	EA	1
10	12	PAOZZ	5310-00-637-9541	96906	MS35338-46	•WASHER,LOCK EA	EA	1
10	13	PAOZZ	5310-00-080-6004	96906	MS27183-14	•WASHER,FLAT, TENSION SPRING EA	EA	1
10	14	XBOZZ		25567	3855	•SPACER,SLEEVE, TENSION SPRING EA	EA	1
10	15	XBOZZ		25567	6270	•SPRING,HELICAL, CHECK VALVE HANDLE.. EA	EA	1
10	16	PAOZZ	5305-00-269-3213	96906	MS90725-62	•SCREW,CAP,HEXAGON, BRACKET MTG EA	EA	1
10	17	PAOZZ	5310-00-837-9541	96906	MS15338-46	•WASHER,LOCK, TENSION SPRING EA	EA	1
10	18	PAOZZ	5310-00-080-6004	96906	M52183-14	•WASHER,FLAT, TENSION SPRING EA	EA	1
10	19	PAOZZ	5305-00-942-2196	96906	MS90725-60	•SCREW,CAP,HEXAGON, BRACKET MTG EA	EA	1
10	20	PAOZZ	5310-00-637-9541	96906	MS35338-46	•WASHER,LOCK, BRACKET MTG EA	EA	1
10	21	XBOZZ		25567	5363	•BRACKET,SPRING..... EA	EA	1
10	22	PAOZZ	5305-00-723-93J5	96906	MS1963-65	•SETSCREW, CHECK VALVE HANDLE..... EA	EA	1
10	23	XBOZZ	4820-00-656-7536	25567	5364	•HANDLE,CHECK VALVE EA	EA	1
10	24	PAFZZ	5315-00-616-5514	96906	MS35756-6	•KEY,WOODRUFF, CHECK VALVE SHAFT EA	EA	1
10	25	XBFZZ	3040-00-800-4621	2556	3848	•SHAFT,STRAIGHT, CHECK VALVE EA	EA	1
10	26	XBOZZ		25567	M0206	•KEY, MACHINE, CHECK VALVE SHAFT EA	EA	1
10	27	PBOZZ	4730-00-656-7488	25567	3847	•NUT,PACKING, CHECK VALVE SHAFT EA	EA	1
10	28	PAOZZ	5330-00-239-8383	13680	162	•RING,PACKING, CHECK VALVE SHAFT..... EA	EA	2
10	29	PAOZZ		05748	38141	•NUT, CASTELLATED, CHECK VALVE WEIGHT MTG EA	EA	1
10	30	XBFZZ		25567	5362	•WEIGHT, CHECK VALVE AGY EA	EA	1
10	30	XBFZZ		35748	38101	•WEIGHT, CHECK VALVE 8YJ EA	EA	1
10	31	PAFZZ	5315-00-298-1481	96906	MS24665-357	•PIN,COTTER, WEIGHT NUT RETAINING EA	EA	1
10	32	XBFZZ		25567	3856	•BOLT, SHOULDER..... EA	EA	1
10	33	PAOZZ	5305-00-723-9387	96906	MS51963-63	SETSCREW, CHECK VALVE ARM EA	EA	1
10	34	XBFZZ		25567	5365	•ARM,CHECK VALVE AGY EA	EA	1
10	34	XBFZZ		35748	38128	•ARM, CHECK VALVE WEIGHT BYJ EA	EA	1

(1) ILLUSTRATION		(2) SMR CODE	(3) NATIONAL STOCK NUMBER	(4) FSCM	(5) PART NUMBER	(6) DESCRIPTION USABLE ON CODE	(7) U/M	(8) QTY INC IN UNIT
(a) FIG NO.	(b) ITEM NO.							
10	35	XAFZZ		25567	5360	• BODY,CHECK VALVE..... AGY	EA	1
10	35	XAFZZ		05748	38159	• BODY,CHECK VALVE..... BYJ	EA	1
28								



TS 4320-242-24P/11

Figure 11. Strainer.

SECTION II

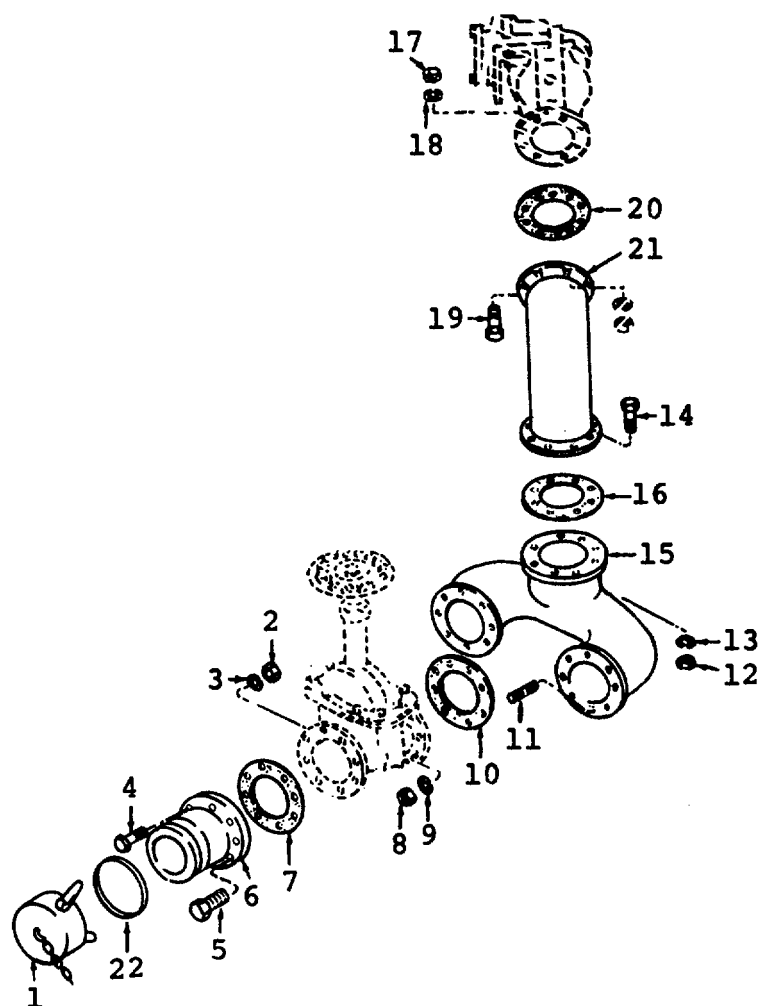
TM 11-4320-242-24P

(1) ILLUSTRATION		(2)	(3)	(4)	(5)	(6)	(7)	(8)
(a) FIG NO.	(b) ITEM NO.	SMR CODE	NATIONAL STOCK NUMBER	FSCM	PART NUMBER	DESCRIPTION USABLE ON CODE	U/M	QTY INC IN UNIT
11	1	XBOZZ		81718	87TF4	STRAINER ASSEMBLY, SUCTION.....	EA	1
11	1	XBOZZ		76364	C35779	STRAINER ASSEMBLY, SUCTION(USED ON SERIAL.....	EA	1
						RANGE 419501 THRU 4199959) AGY		
11	2	PAOZZ	4730-00-60-6188	96906	MS27029-17	•PLUG,DUST, GATE VALVE COUPLER	EA	2
11	3	PAOZZ	5310-0-732-0558	96906	M51967-8	•NUT,PLAIN,HEXAGON, STRAINER MTG.....	EA	16
11	4	PAOZZ	5310-0637-9541	96906	NS35338-46	•WASHER,LOCK, STRAINER 4TG	EA	16
11	5	PAOZZ	5305-00-269-3215	96906	MS90725-65	•SCREW,CAP,HEXAGON, STRAINER MTG....	EA	16
11	6	XBOZZ	4730-00-840-5348	96906	527027-17	•COUPLER, GATE VALVE.....	EA	2
11	7	PADZZ	5330-00-089-3912	25567	5372GC	•GASKET, COUPLER	EA	4
11	8	PAOZZ	5310-00-732-0558	96966	MS51967-8	•NUT,PLAIN,HEXAGON STRAINER MTG	EA	16
11	9	PAOZZ	5310-00-637-9541	96906	MS35338-46	•WASHER,LOCK, STRAINER MTG	EA	16
11	10	PAOZZ	5307-00-30-0720	25567	C0606	•STUD,STRAINER MTG.....	EA	16
11	11	PAOZZ	5310-00-732-0558	96906	MS51967-8	•NUT,PLAIN,HEXAGON, MANIFOLD MTG	EA	8
11	12	PAOZZ	5310-00-637-941	96906	MS35338-46	•WASHER,LOCK, MANIFOLD MTG	EA	8
11	13	PAOZZ	5305-00-269-3215	96906	KS90725-65	•SCREW,CAP,HEXAGON, MANIFOLD MTG	EA	1
11	14	XBOZZ		05748	37437	•MANIFOLD, SUCTION.....	EA	1
11	15	PAOZZ	5330-00-089-3912	25567	5372GC	•GASKET, SUCTION AND DISCHARGE	EA	1
11	16	PAOZZ	5310-00-732-0558	96906	MS5196 -8	•NUT,PLAIN,HEXAGON, BODY MTG	EA	8
11	17	PAOZZ	5310-00-637-9541	96906	MS35338-46	•WASHER,LOCK, BODY MTG	EA	8
11	18	PAOZZ	5330-00-089-3912	25567	5372GC	•GASKET, SUCTION AND DISCHARGE	EA	1
11	19	PAOZZ	5307-00-360-0720	25567	C0606	•STUD, STRAINER MTG,PUMP HOUSING.....	EA	8
11	20	X80ZZ		11718	H4218N	•SETSCREW, COVER MTG	EA	1
11	20	XBOZZ		76364	4227L	•SETSCREW YOKE (USED ON SERIAL RANGE 419501	EA	1
						THRU 419959)..... AGY		
11	21	XBOZZ		81718	H366M	•CLAMP,CAP QUICK DISCONNECT.....	EA	1
11	21	XBOZZ		76364	469N	•YOKE,COVER MTG (USED ON SERIAL RANGE 419501	EA	1
						THRU 419959)..... AGY		
11	22	PAOZZ	5310-00-825-2677	96906	MS35691-49	•NUT,SELF-LOCKING, COVER YOKE SE TSCREW		
EA	1							
11	22	XBDZZ		76364	3158L	•NUT,PLAIN,HEXAGON, YOKE SETSCREW (USED ON SERIAL RANGE 419501 THRU 419959).... AGY		
EA	1							
11	23	XBOZZ		81718	H477A	CAP,BASKET ASSEMBLY	EA	1
11	23	XBOZZ		76364	40192N	COVER,SCREEN USED ON SERIAL RANGE 419501 THRU 419959).....	EA	1
11	24	PAOZZ	5330-00-73-7749	81718	HS08M	GASKET STRAINER CAP	EA	1
11	24	PAOZZ	5330-00-65-1746	76364	6675N	GASKET, COVERIUSED ON SERIAL RANGE 419501.....	EA	1
						THRU 419959)..... AGY		
11	25	PAOZZ	5330-00-732-7750	81718	HT78N	GASKET,BASKET.....	EA	1
11	26	X80ZZ		81718	C987	BASKET ASSEMBLY STRAINER	EA	1
11	27	XBOZZ		76364	7231N4	SCREEN, STRAINER (USED ON SERIAL RANGE 419501 THRU 419959)	EA	1
						AGY		
11	27	PAOZZ	5330-00-732-7750	81718	H778M	GASKET, STRAINER BASKET ASSEMBLY	EA	1
11	28	XDOZZ		81718	C2 52A	BODY STRAINER, SUCTION.....	EA	1

SECTION II

TM 11-4320-242-24P

(1) ILLUSTRATION		(2) SMR CODE	(3) NATIONAL STOCK NUMBER	(4) FSCM	(5) PART NUMBER	(6) DESCRIPTION USABLE ON CODE	(7) U/M	(8)
(a) FIG NO.	(b) ITEM NO.							QTY INC IN UNIT
11	28	XBOZZ	5330-00-899-4509	76364	22106N	• BODY STRAINER SUCTION (USED ON SERIAL RANGE 419501 THRU 419959) AGY	EA	1
11	29	XBOZZ		25567	6031	• BRACKET, THROTTLE..... AGY	EA	1
11	29	XBOZZ		35748	37517	• BRACKET, SUPPORT, THROTTLE CABLE... BYJ	EA	1
11	30	PAOZZ		96906	MS27030-9	GASKET	EA	4
32								



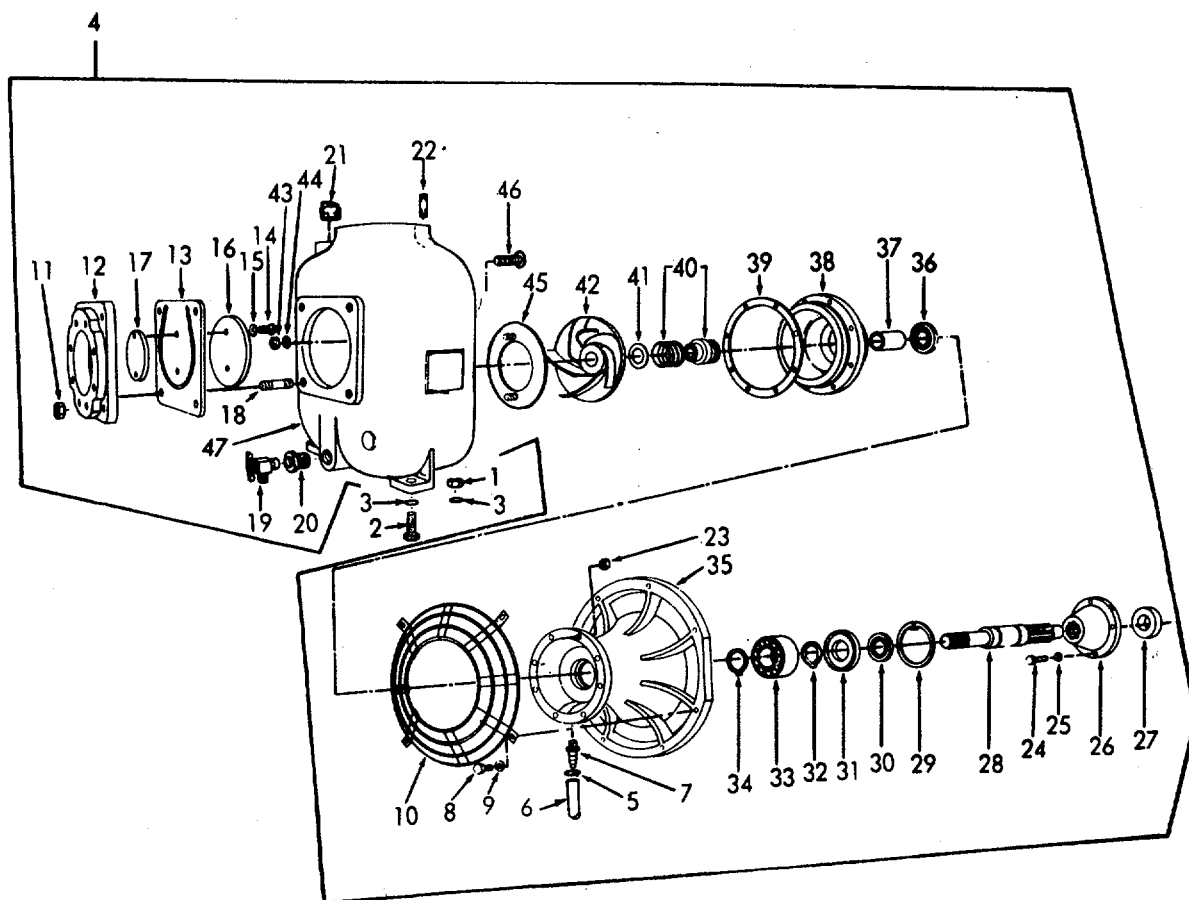
TS 4320-242-24P/12

Figure 12. Manifold.

SECTION II

TM 5-4320-242-24P

(1) ILLUSTRATION		(2)	(3)	(4)	(5)	(6) DESCRIPTION	(7)	(8)
(a) FIG NO.	(b) ITEM NO.	SMR CODE	NATIONAL STOCK NUMBER	FSCM	PART NUMBER	USABLE ON CODE	U/M	QTY INC IN UNIT
12	1	PAOZZ	4730-00-640-6156	16906	MS27028-17	CAPDOUST, GATE VALVE.....	EA	2
12	2	PAOZZ	5301-00-732-0558	96906	MS51967-8	NUT, PLAIN, HEXAGON, MANIFOLD AND GATE VALVE	EA	16
						MOUNTING	EA	16
12	3	PAOZZ	5310-00-637-9541	96906	MS35338-46	NASHER, LOCK	EA-	16
12	4	PAOZZ	5305-00-269-3215	96906	RS90725-65	SCREW, CAP, HEXAGON, ... MANIFOLD AND COUPLING.....	EA	7
12	5	PAOZZ	5305-00-269-3214	96906	MS59025-64	SCREW, CAP, HEXAGON, MANIFOLD NTG ...	EA	2
12	6	XBOZZ	4730-00-840-5347	96906	MS27023-17	COUPLING, HALF,QUICK DISCONNECT, GATE VALVE.....	EA	2
12	7	PAOZZ	5330-00-089-3912	25567	5372GC	GASKET, DISCHARGE.....	EA	2
12	8	PAOZZ	5310-00-732-0558	96906	MS51967-8	MJT, PLAIN, HEXAGON, VALVE TO MANIFOLD	EA	
16								
12	9	PAOZZ	5310-00-637-9541	96906	MS35338-46	WASHER, LOCK, VALVE TO MANIFOLD	EA	16
12	10	PAOZZ	5330-00-089-3912	25567	5372C	GASKRT, DISCHARGE.....	EA	2
12	11	PAOZZ	5307-00-360-0720	25567	C0606	STUD, PLAIN, GATE VALVE NTG	EA	1
12	12	PAOZZ	5310-00-732-0558	96906	MS51967-8	NUT, PLAIN, HEXAGON.....	EA	8
12	13	PAOZZ	5310-00-637-9541	96906	14535338-46	WASHER, LOCK	EA	8
12	14	PAOZZ	5305-00-269-3215	E6906	S590725-65	SCREW, CAP, HEXAGON, ELBOW TO MANIFOLD	EA	8
12	15	XBOZZ		25567	8514	MANIFOLD, DISCHARGE	EA	1
12	16	PAOZZ	5330-00-089-3912	25567	5372GC	GASKET, DISCHARGE.....	EA	1
12	17	PAOZZ	5310-00-732-0558	96906	MS51967-8	NUT, PLAIN, HEXAGON, CHECK VALVE KTG	EA	8
12	11	PAOZZ	5310-00-637-9541	36906	MS35338-46	WASHER, LOCK, CHECK VALVE MTG.....	EA	8
12	19	PAOZZ	5305-00-269-3215	96906	MS90725-65	SCREW, CAP, HEXAGON, ELBOW TO CHECK VALVE	EA	8
12	20	PAOZZ	5330-00-089-3912	25567	5372GC	GASKET, DISCHARGE.....	EA	1
12	21	XBOZZ	4T30-00-586-1982	35748	37461	ELBOW, DISCHARGE	EA	1
12	22	PAOZZ	5330-00-899-4509	96906	MS27030-9	GASKET	EA	4
35								



TS 4320-242-24P/13

Figure 13. Pump.

SECTION II

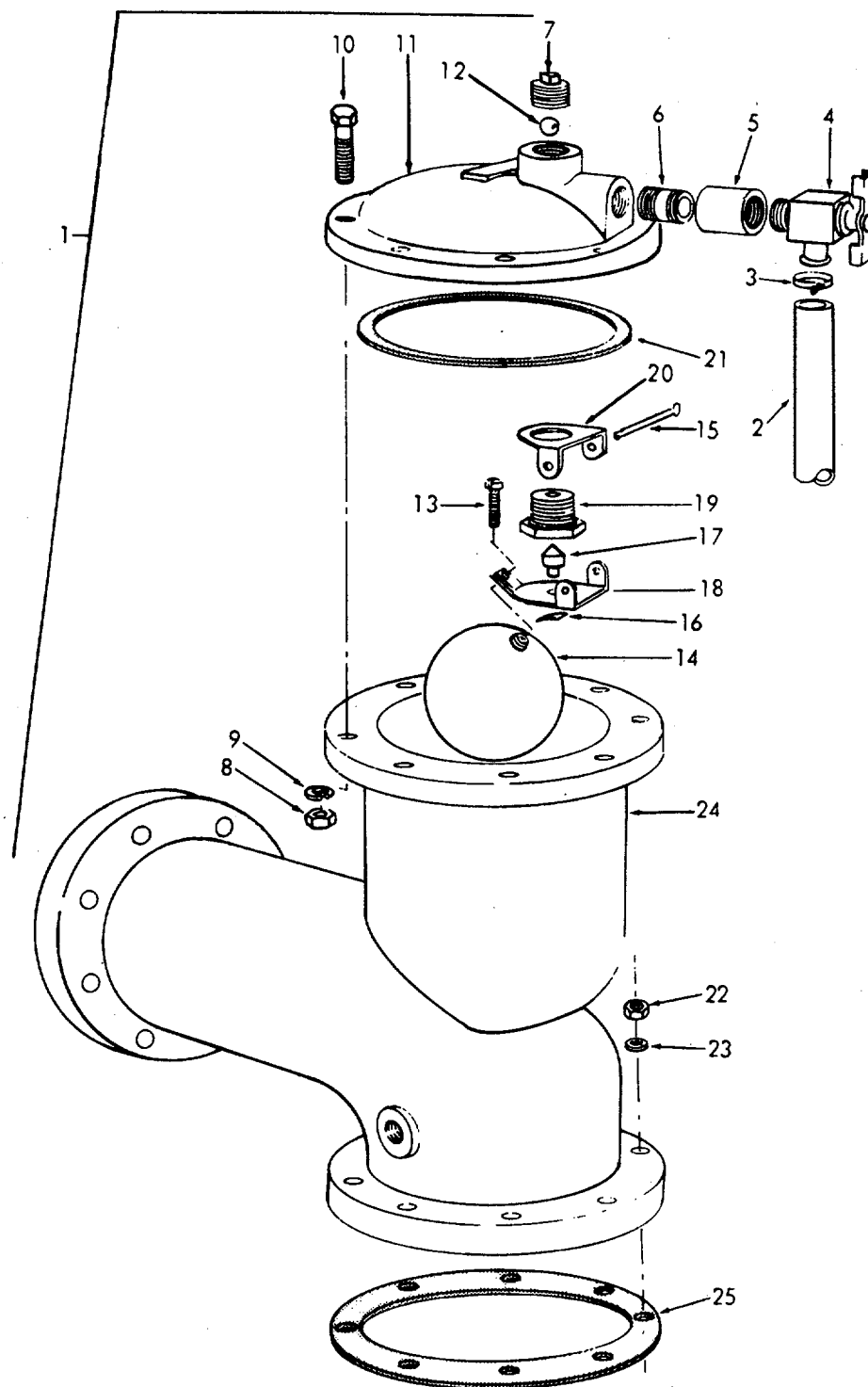
TM 5-4320-242-24P

(1) ILLUSTRATION		(2)	(3)	(4)	(5)	(6)	(7)	(8)
(a) FIG NO.	(b) ITEM NO.	SMR CODE	NATIONAL STOCK NUMBER	FSCM	PART NUMBER	DESCRIPTION USABLE ON CODE	U/M	QTY INC IN UNIT
13	1	PAOZZ	5310-00-768-0318	96906	MS51967-14	NUT, PLAIN, HEXAGDN, PUMP MTG.....	EA	2
13	2	PAOZZ	5305-00-042-6417	96906	MS90725-113	SCREW, CAP, HEXAGON, PUMP MTG	EA	2
13	3	PAOZZ	5310-00-209-5116	96906	MS35335-37	WASHER, LOCK, PUMP MTG	EA	4
13	4	XBFZZ	4320-00-936-3810	25567	11749	PUMP UNIT, CENTRIFUGAL..... AGY	EA	1
13	4	XBFZZ		05748	374265A	PUMP ASSEMBLY..... BYJ	EA	1
13	5	XBOZZ		35748	37528	.CLAMP, HOSE, SEAL.....	EA	1
13	6	XDOZZ	4720-00-138-8190	05748	37529	.HOSE, NONMETALLIC	EA	1
13	7	XBOZZ		J5748	37527	.NIPPLE..... BYJ	EA	1
13	8	PAFZZ	5306-00-225-8503	96906	MS90725-39	.BOLT, MACHINE, HOUSING AND GUARD MTG	EA	8
13	9	PAFZZ	5310-00-407-9566	6906	MS35338-45	.WASHER, LOCK, HOUSING AND GUARD MTG	EA	8
13	10	XBFZZ	4320-00-122-9988	97403	13213E9837	.GUARD, INTERMEDIATE PUMP HOUSING ...	EA	1
13	11	PAOZZ	5310-00-763-8920	96906	MS51967-20	.NUT, PLAIN, HEXAGON, SUCTION ADAPTER MTG	EA	4
13	12	XAFZZ		25567	11189	.ADAPTER, SUCTION	EA	1
13	12	XAFZZ		05748	37711	.ADAPTER, SUCTION	EA	1
13	13	XAFZZ		25567	11745G	.GASKET, CHECK VALVE	EA	1
13	13	XAFZZ		05718	37683	.GASKET	EA	1
13	14	PAFZZ	5305-00-0680501	96906	MS90720-5	.SCREW, CAP, HEXAGON, .. VALVE WEIGHT MTG(USED	EA	2
						ON SERIAL RANGE	EA	2
						311201 THRU 3113461303791 TMRU 383810 AND 400424 THRU 400549)	EA	1
13	14	PAFZZ	5305-00-068-0502	96906	MS90125-6	.SCREW, CAP, HEXAGON, .. VALVE WEIGHT MTG(USED ON.....	EA	2
						SERIAL RANGE.....	EA	2
						405143 THRU 405365, 415480 THRU 415493 AND 419501 THRU 4199591..... AGY	EA	2
13	14	PAFZZ	5305-00-207-8253	96906	MS35307-308	.SCREW, CAP, HEXAGON, VALVE WEIGHT MTG	EA	1
13	15	PAFZZ	5310-00-582-5965	96906	NS35338-44	.WASHER, LOCK, VALVE WEIGHT MTG	EA	2
13	16	XAFZZ		25967	11751	.WEIGHT, VALVE	EA	1
13	16	XAFZZ		05718	01488	.WEIGHT, LARGE	EA	1
13	11	XAFZZ		25567	11746	.WEIGHT, VALVE	EA	1
13	17	XAFZZ		05748	01487	.WEIGHT, SMALL.....	EA	1
13	18	XBFZZ		35784	38294	.STUD, SUCTION, ADAPTER MTG.....	EA	4
13	19	PADZZ	4820-00-845-1096	19470	6660	.COCK, DRAIN	EA	1'
13	20	XBFZZ		25567	AP12-04	.BUSHING, REDUCER, HOUSING TO DRAIN COCK	EA	1
13	20	XBFZZ		05148	38063	.BUSHING, PIPE.....	EA	1
13	21	XBOZZ		25567	P24	.PLUG, PIPE, CASING TOP.....	EA	1
13	21	PAOZZ	4730-00-145-6231	051748	03207	.PLUG, PIPE, CASING TOP.....	EA	1
13	22	PAOZZ	5307-00-140-8149	15748	02417	.STUD, DISCHARGE, ELIMINATOR MTG	EA	8
13	23	PAFZZ	5310-00-732-0558	96906	MS51961-8	.NUT, PLAIN, HEXAGON, HOUSING TO PUMP	EA	8
13	24	PAOZZ	5306-00-078-0164	96906	MS35763-819	.SCREW, CAP, HEXAGON, SPLINE MTG	EA	4
13	25	PAFZZ	5310-00-407-9566	96906	NS35336-45	.WASHER, LOCK	EA	8
13	26	XBFZZ	4320-00-122-9990	97403	13213E9834	.COUPLING	EA	1
13	27	XBFZZ	312000-146-2533	97403	13213E9840	.BUSHING, PILOT, IMPELLER SHAFT	EA	1
13	28	XAFZZ		97403	13213E9831	.SHAFT, IMPELLER.....	EA	1
13	29	PAFZZ	5365-00-081-1376	96906	MS16631-315	.RING, RETAINING.....	EA	1

SECTION II

TM 5-4320-242-24P

(1) ILLUSTRATION		(2)	(3)	(4)	(5)	(6)	(7)	(8)
(a) FIG NO.	(b) ITEM NO.	SMR CODE	NATIONAL STOCK NUMBER	FSCM	PART NUMBER	DESCRIPTION USABLE ON CODE	U/M	QTY INC IN UNIT
13	30	XBFZZ		96906	MS51001-19	.SEAL, OIL, IMPELLER SHAFT.....	EA	1
13	31	PAFZZ	3110-00-934-7945	97403	13213E9838	.RETAINER.....	EA	1
13	32	PAFZZ	5365-00-803-9978	96906	MS16624-137	.RING, RETAINING, IMPELLER BEARING	EA	1
13	33	PAFZZ	3110-00-156-4856	97403	13213E9836	.BEARING, ALL	EA	1
13	34	PAFZZ	5363-00-003-9978	96906	MS16624-137	.RING, RETAINING	EA	2
13	35	XBFZZ		97403	13213E9835	.HOUSING.....	EA	1
13	36	XBFZZ		96906	MS51001-19B	.SEAL, OIL, IMPELLER SHAFT.....	EA	1
13	37	PAFZZ	3120-00-077-0596	23567	11847	.SLEEVE, IMPELLER SHAFT.....	EA	1
13	38	PAFZZ	4320-00-629-4388	25567	11741	.RETAINER, OIL SEAL, IMPELLER	EA	1
13	39	PAFZZ	5330-00-089-3911	25567	11742GA	.GASKET, SEAL PLATE TO PUMP	EA	1
13	40	PAFZZ	4320-00-918-4185	97403	13213E9844	.SEAL ASSEMBLY SHAFT	EA	1
13	41	PAFZZ	9365-00-377-6983	25567	2X	.SHIM SET, IMPELLER	EA	1
13	42	PAFZZ	4320-00-071-2521	25567	11747	.IMPELLER, PUMP	AGY EA	1
13	42	PBFZZ	4320-00-131-8147	05174	38390	.IMPELLER	BYJ EA	1
13	43	PAFZZ		5310-00-732-0558		96906 MS51967-8.... .NUT, PLAIN, HEXAGON, WEAR PLATE MTG	EA	2
13	44	PAFZZ	5310-00-637-9541	96906	MS35338-46	.WASHER, LOCK, WEAR PLATE MTG.....	EA	2
13	45	PBFZZ	4320-00-010-4105	25567	11744	.PLATE, WEAR, IMPELLER.....	AGY EA	1
13	45	XDFZZ	5365-00-138-8146	05714	38419	.SPACER, PLATE, IMPELLER.	BYJ EA	1
13	46	PAOZZ	5306-00-225-8503	96906	MS90725-39	.SCREW, ENGINE To PUMP-5/-18 X 1.750 L ..	EA	8
13	41	XBFZZ		25567	11742	.CASING, VOLUTE	AGY EA	1
13	47	XBFZZ		05748	37716	.CASING, VOLUTE	BYJ EA	1



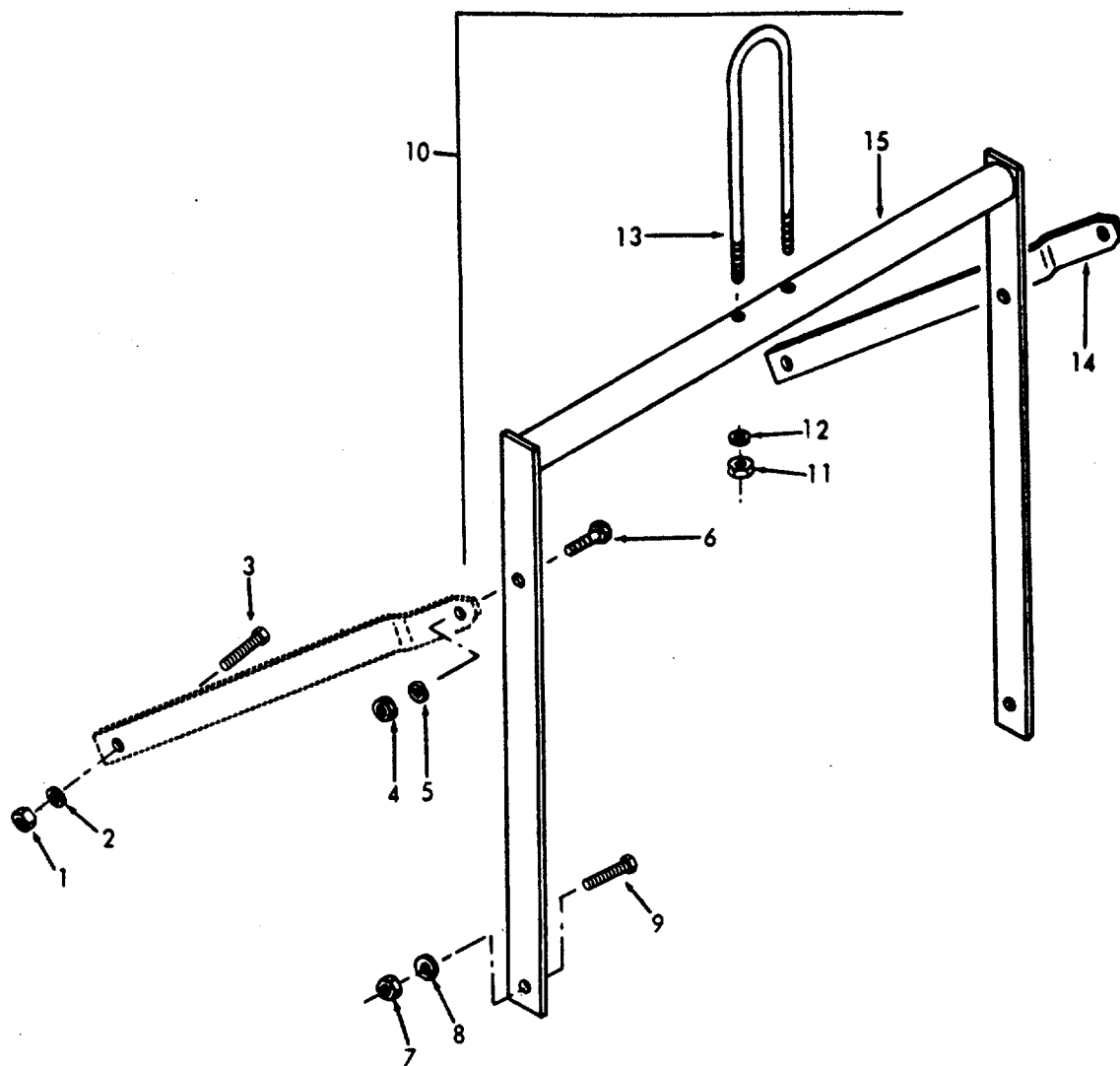
TS 4320-242-24P/14

Figure 14. Air Eliminator.

SECTION II

TM 5-4320-242-24P

(1) ILLUSTRATION		(2)	(3)	(4)	(5)	(6)	(7)	(8)
(a) FIG NO.	(b) ITEM NO.	SMR CODE	NATIONAL STOCK NUMBER	FSCM	PART NUMBER	DESCRIPTION USABLE ON CODE	U/M	QTY INC IN UNIT
						GROUP 06 AIR ELIMINATOR		
14	1	PBOZZ	4320-00-138-8149	35748	37458SA	ELIMINATOR ASSEMBLY	EA	1
14	2	XB0ZZ		61463	P282	HOSE, ELIMINATOR VALVE	EA	1
14	3	PAOZZ	4730-00-138-8164	05748	37531	.CLAMP, HOSE.....	EA	1
14	4	PAOZZ	4820100-845-1096	19470	6660	.COCK DRAIN	EA	1
14	5	PAOZZ	4730-00-138-8165	05748	03226	.COUPLING, PIPE, ELIMINATOR DRAIN COCK	EA	1
14	6	PAOZZ	4730-00-188-1855	05748	03262	.NIPPLE PIPE	EA	1
14	7	PAOZZ	4730-01-005-2402	05744	03217	.PLUG, PIPE.....	EA	1
14	8	XBOZZ		99110	MS35690-502	.NUT, PLAIN, HEXAGON, CAP MTG	EA	8
14	9	PAOZZ	5310-00-407-9566	96906	MS35338-45	.WASHER, LOCK, CAP MTG.....	EA	8
14	10	PAOZZ	5305-00-225-9081	96906	MS90725-36	.SCREW, CAP, HEXAGON, CAP MTG	EA	8
14	11	XADZZ		03933	8563	.CAP AIR ELIMINATOR	EA	1
14	12	XBOZZ	3110-00-100-6155	96906	MS150461	.BALL, BEARING AIR ELIMINATOR	EA	1
14	13	XDOZZ		03993	A39318-8	.SCREW, VALVE CLIP	EA	1
14	14	XBOZZ		03933	A4646	.FLOAT	EA	1
14	15	XDOZZ	5315-00-772-9446	03933	A3232	.PINSTRAIGHT, CLIP TO LEVER	EA	1
14	16	XBOZZ		05784	38212	.RETAINER.....	EA	1
14	17	XOOZZ	3655-00-307-7479	03933	A2628	.DISK, NEEDLE VALVE	EA	1
14	18	XBOZZ		03933	A3467	.LEVER, AIR VALVE	EA	1
14	19	XBOZZ		03933	3636	.SEAT VALVE	EA	1
14	20	XBOZZ	4730-00-098-5160	03933	A1917	.CLIP, VALVE LEVER	EA	1
14	21	PAOZZ	5330-00-542-1090	25567	5190G	.GASKET, AIR ELIMINATOR, CAP	EA	1
14	22	PAOZZ	5310-00-732-0558	96906	MS51967-8	.NUT, PLAIN, HEXAGON, ELIMINATOR MTG .	EA	8
14	23	PAOZZ	5310-00-637-9541	96906	MS35338-46	.WASHER, LOCK, ELIMINATOR MTG.....	EA	8
14	24	XBOZZ		25567	5453A	.ELBOW, DISCHARGE	EA	1
14	25	PAOZZ	5330-00-089-3912	25567	5372GC	.GASKET, PUMP TO AIR ELIMINATOR.....	EA	13



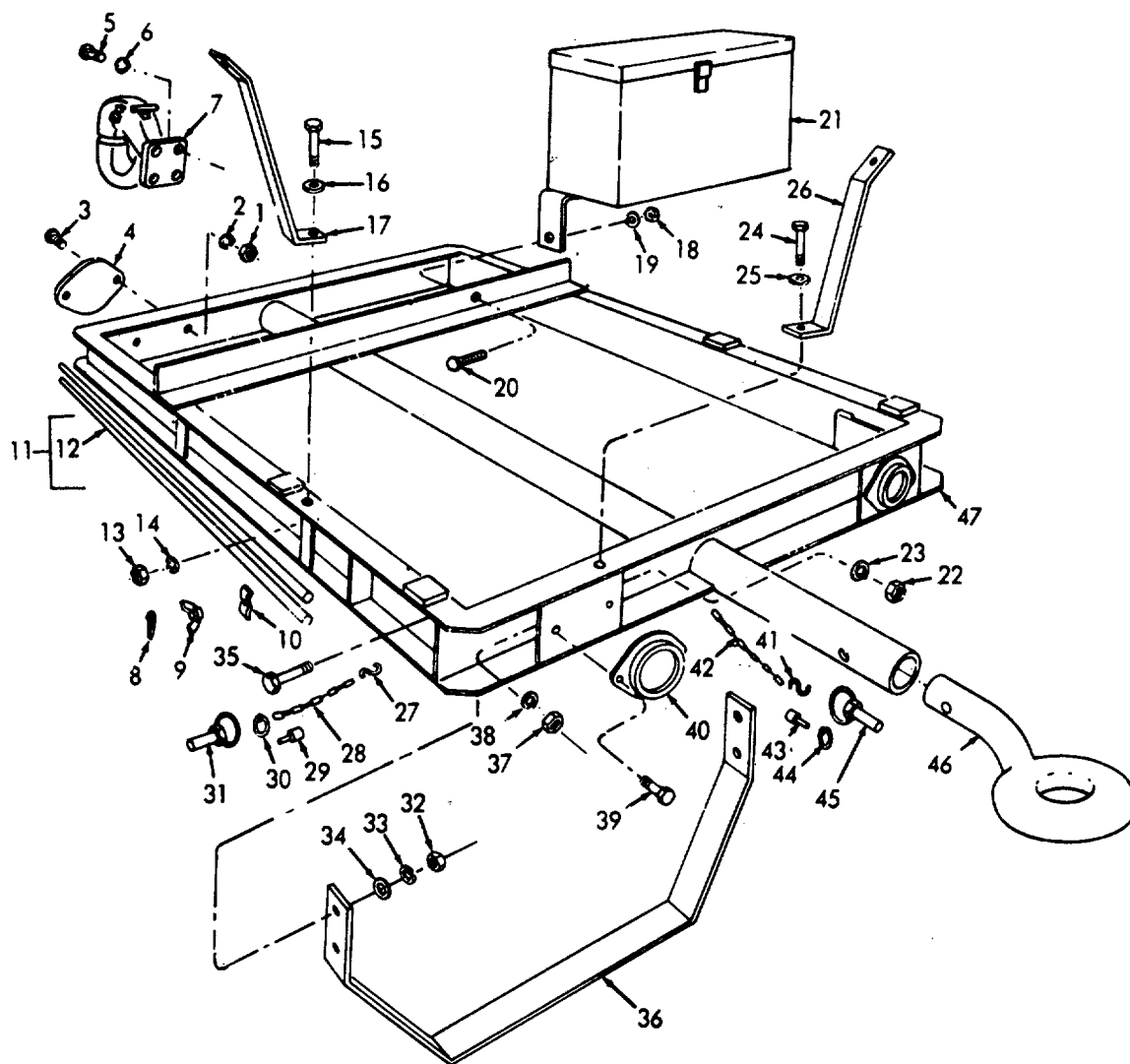
TS 4320-242-24P/15

Figure 15. Lifting Components.

SECTION II

TM 5-4320-242-24P

(1) ILLUSTRATION		(2)	(3)	(4)	(5)	(6)	(7)	(8)
(a) FIG NO.	(b) ITEM NO.	SMR CODE	NATIONAL STOCK NUMBER	FSCM	PART NUMBER	DESCRIPTION USABLE ON CODE	U/M	QTY INC IN UNIT
						GROUP 07 WHEELS. AXLE, FRAME AND LIFTING COPONENTS		
15	1	PAOZZ	5310-00-763-8920	96906	MS51967-20	NUT, PLAIN, HEXAGON, LIFTING FRAME.....	EA	2
15	2	PAOZZ	5310-00-820-6653	96906	MS3533-50	WASHER, LOCK, LIFTING FRAME BRACE MTG	EA	2
15	3	PAOZZ	5308-00-051-0827	96906	MS90725-164	SCREW, CAP, HEXAGON, .. TRAILER FRAME TO LIFTING FRAME	EA	2
15	4	PAOZZ	5310-00-763-8920	6906	MS51967-20	NUT, PLAIN, HEXAGON, LIFTING FRAME.....	EA	2
15	5	PADZZ	5310-00-820-6533	91906	MS35338-50	WASHER, LOCKLIFTING FRAME	EA	2
15	6	PAOZZ	5305-00-724-5910	96906	MS90725-162	SCREW, CAP, HEXAGON, LIFTING FRAME...	EA	2
15	7	PAOZZ	5310-00-763-8920	96906	MS51967-20	NUT, PLAIN, HEXAGON, LIFTING FRAME.....	EA	2
15	8	PAOZZ	5310-00-820-6653	96906	MS35338-50	WASHER LOCK, LIFTING FRAME	EA	2
15	9	PAOZZ	5305-00-051-0827	96906	MS90125-164	SCREW, CAP, HEXAGON LIFTING FRAME TO TRAILER FRAME.....	EA	4
15	10	XBFZZ		25567	13056	FRAME ASSEMBLY.....	EA	1
15	11	PAOZZ	5310-00-834-8732	96906	MS35691-33	.NUT, PLAIN, HEXAGON, RING MTG.....	EA	2
15	12	PAOZZ	5310-00-768-0318	96906	MS51967-14	.NUT, PLAIN, HEXAGON, RING MTG.....	EA	2
15	13	PB0ZZ	5306-00-139-7307	97403	13213E9849-1	.U-BOLT, LIFT	EA	1
15	14	XBOZZ		19403	13213E9845	.BRACE, LIFT, FRAME	EA	2
15	15	XBOZZ		97403	13213E9846	.FRAME, LIFTING.....	EA	1



TS 4320-242-24P/16

Figure 16. Frame and Components.

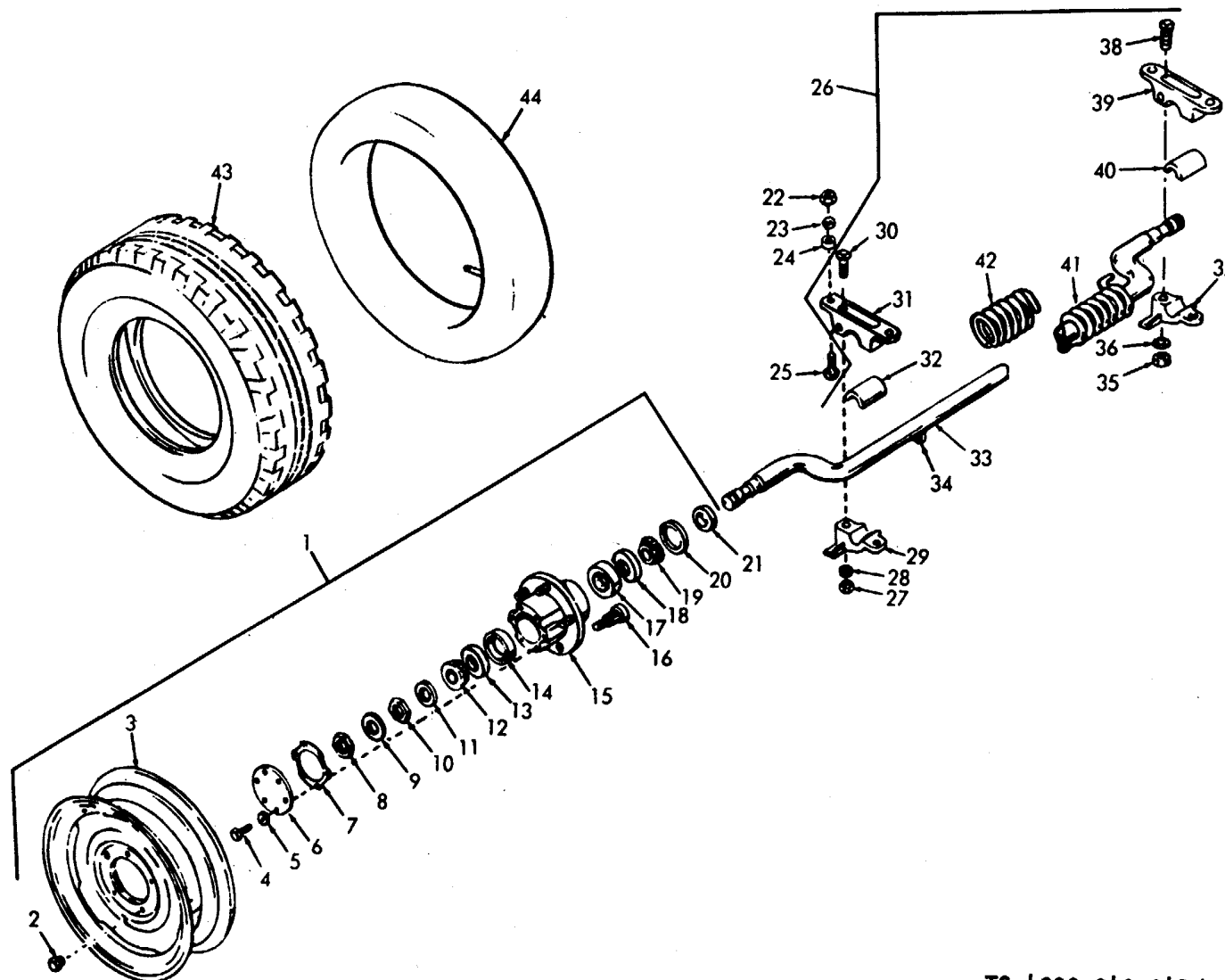
TM 5-4320-242-24P

(1) ILLUSTRATION		(2)	(3)	(4)	(5)	(6) DESCRIPTION	(7)	(8)
(a) FIG NO.	(b) ITEM NO.	SMR CODE	NATIONAL STOCK NUMBER	FSCM	PART NUMBER	USABLE ON CODE	U/M	QTY INC IN UNIT
16	1	XDOZZ	5310-00-761-6882	96906	MS51967-2	NUT, PLAIN.HEXAGCN, REFLFCTOR MTG, REAR	EA	4
16	2	PAOZZ	5310-00-582-5965	96906	MS35338-44	WASHER, LOCK, REFLECTOR MTG.REAR....	EA	4
16	3	PAOZZ	5305-00-068-0502	96906	MS90725-6	SCREW, CAP, HEXAGON, REFLECTOR MTG	EA	4
16	4	PAOZZ	9905-00-205-2795	96906	MS353587-1	REFLECTOR, INDICATING, TRAILER, REAR .	EA	2
16	5	PAOZZ	5305-00-044-4153	96906	MS90725-109	SCREW, CAP, HEXAGON, PINTLE MTG	EA	4
16	6	PAOZZ		96906	MS35338-48	WASHER, LOCK, PINTLE MTG	EA	4
16	7	XBOZZ	2540-00-835-9039	96906	MS51335-2	PINTLE ASSEMBLY.TOW	EA	1
16	8	PAOZZ	S315-00-642-3044	96906	MS24665-283	PIN, COTTER	EA	1
16	9	PAOZZ	5310-00-689-2606	96906	MS35425-42	NUT, WING	EA	1
16	10	PAOZZ	5340-00-420-9693	25567	13085	CLAMP, ROD, GROUNDING ROD MTG	EA	1
16	1	PADZZ	5995-01-032-5572	35748	28006SA	CABLE ASSEMBLY, GROUND ROD	EA	2
16	12	PAOZZ	5975-00-577-8825	05748	15675	ROD, GROUND	EA	2
16	13	PAOZZ	5310-00-732-0558	36906	MS51967-8	NUT, PLAIN.HEXAGON,SUCTION AND DISCHARGE BRACKET MTG	EA	2
16	14	PAOZZ	5310-00-637-9541	96906	MS35338-46	WASHER, LOCK, SUCTION AND DISCHARGE BRACKET MTG	EA	2
16	15	PAOZZ	5305-00-225-3838	96906	MS90725-4	SCREW, CAP, HEXAGON SUCTION AND DISCHARGE BRACKET MTG	EA	4
16	16	PAOZZ	5310-00-080-6004	96906	MS27183-14	WASHER, FLAT, BRACKET TO FRAME	EA	2
16	17	XBOZZ		25567	11890	BRACKET, SUPPORT	AGY	2
16	17	XBOZZ		35748	37466	BRACKET, DISCHARGE	BYJ	2
16	18	PAOZZ		36906	MS35690-602	NUT, PLAIN, HEXAGON, TOOL BOX MTG	EA	2
16	19	PAOZZ	5310-00-637-9541	96906	MS35338-46	WASHER, LOCK, TOOL BOX MTG	EA	2
16	20	PAOZZ	5305-00-942-2196	96906	MS90725-0	SCREW, CAP, HEXAGON, TOOL BOX MTG...	EA	2
16	21	XBOZZ		25561	22768	TOOL BOX ASSEMBLY	AGY	1
16	21	XBOZZ		05748	38316	TOOL BOX	BYJ	1
16	2	PAOZZ	5310-00-732-0558	36906	MS51967-8	NUT, PLAIN, HEXAGON, SUCTION AND DISCHARGE	MTG	2
16	23	PAOZZ	5310-00-637-9541	96906	MS35338-46	WASHER, LOCK, SUCTION AND DISCHARGE	MTG	2
16	24	PAOZZ	5305-00-225-3838	96906	NS90725-4	SCREW, CAP, HEXAGON, SUCTION AND DISCHARGE BRACKET	MTG	2
16	25	PAOZZ	5310-00-080-6004	96906	MS27183-14	WASHER, FLAT, BRACKET TO FRAME	EA	4
16	26	XBOZZ		25567	11891	BRACKET, SUPPORT	EA	2
16	27	XB0ZZ		25567	S884	PIN, SPRING, ANCHOR, SAFETY CHAIN	EA	2
16	28	MOOZZ			81348	RR-C-271, TYPECHAIN, SAFETY, REAR STAND	EA	4
					II, CLASS 2, TRADE NUMBER 5			
16	29	PAOZZ	5315-00-139-7249	97403	13213E98343-1	PIN ASSEMBLY, STAND	EA	2
16	30	X8DZZ		25567	5228	RING, RETAINING, HAND STAND SAFETY CHAIN	EA	2
16	31	PAOZZ	5315-00-456-7464	97403	13213E9843-1	RING, SAFETY CHAIN	EA	6
16	32	XB0ZZ		96906	MS35690-1002	NUT, PLAIN, HEXAGON SUPPORT LEG MTG	EA	1
16	33	PAOZZ	5310-00-820-6653	96906	MS35338-50	WASHER, LOCK, SUPPORT LEG MTG	EA	2
16	34	PAOZZ	5310-00-820-8803	96906	MS27183-21	WASHER.FLAT, SUPPORT LEG MTG	EA	2
16	35	PAOZZ	5305-00-727-3804	96906	MS90725-165	SCREW, CAP, HEXAGON, SUPPORT LEG	MTG	2
16	36	XBOZZ		97403	13213E9819	STAND	EA	1
16	37	XOOZZ	5310-00-161-6882	96906	MS51967-2	NUT, PLAIN, HEXAGON, REFLECTOR MTG, FRONT	EA	4
16	38	PAOZZ	5310-00-582-5965	96906	MS35338-44	WASHER, LOCK REFLECTOR MTG, FRONT .	EA	4
Change 1 45								

SECTION II

TM 5-4320-242-24P

(1) ILLUSTRATION		(2)	(3)	(4)	(5)	(6)	(7)	(8)
(a) FIG NO.	(b) ITEM NO.	SMR CODE	NATIONAL STOCK NUMBER	FSCM	PART NUMBER	DESCRIPTION USABLE ON CODE	U/M	QTY INC IN UNIT
16	39	PAOZZ	5305-00-06S-0502	46906	MS90725-6	SCREW, CAP, HEXAGON, REFLECTOR MTG	EA	4
16	40	PAOZZ	9905-00-202-3639	96906	MS35387-2	REFLECTOR, YELLOW, TRAILER, FRONT	EA	2
16	41	XBOZZ		25567	S884	PIN, SPRING, ANCHOR, SAFETY CHAIN	EA	1
16	42	XBOZZ		25567	S2041	CHAIN, SAFETY, DRAWBAR	EA	2
16	43	XBOZZ		25567	6010	PIN, SAFETY CHAIN	EA	1
16	44	X8OZZ		25567	5228	RING, RETAINING, HAND STAND SAFETY CHAIN	EA	1
16	45	PAOZZ	5315-00-656-7464	97403	13213E9843-2	RING, SAFETY CHAIN	EA	3
16	46	XBOZ	2540-01-021-0782	97403	13213E9821-1	TOWBAR, MOTOR VEHICLE	EA	1
16	47	XBFZZ		97403	13213E9818	FRAME, BASE	EA	1
Change 1 46								



TS 4320-242-24P/17

SECTION II

TM 5-4320-242-24P

(1) ILLUSTRATION		(2)	(3)	(4)	(5)	(6)	(7)	(8)
(a) FIG NO.	(b) ITEM NO.	SMR CODE	NATIONAL STOCK NUMBER	FSCM	PART NUMBER	DESCRIPTION USABLE ON CODE	U/M	QTY INC IN UNIT
17	1	XBOZZ		25567	5708	.WHEEL ASSEMBLY	EA	2
17	2	XBOZZ		19207	5232404	.NUT, WHEEL LH	EA	5
17	2	XBOZZ		19207	5232405	.NUT WHEEL RH.....	EA	5
17	3	XBOZZ		00000	7387807	.WHEEL.PNEUMATIC.....	EA	1
17	4	PAOZZ	5305-00-717-5460	96906	MS35307-359	.SCREW,CAP, HEXAGON CAP MTG	EA	6
17	5	PAOZZ	5310-00-637-9541	96906	MS35338-46	.WASHER, LOCK, CAP	EA	6
17	6	XAOZZ		00000	7735821	.CAP	EA	1
17	7	PADZZ	5330-00-737-1109	19201	737109	.GASKET, CAP TO HUB	EA	1
17	8	PBOZZ	5310-00-737-1106	19201	737110	.NUT HUB.....	EA	1
17	9	PBOZZ	5310-00-769-6520	19207	7696520	.WASHER, ADJUSTMENT NUT	EA	1
17	10	XBOZZ		00000	7371106	.NUT, BEARING ADJUSTMENT.....	EA	1
17	11	PBOZZ	5310-00-769-6521	19207	7696521	.WASHER KEY, NUT LOCKING	EA	1
17	12	XAOZZ		60038	18590	.CONE AND ROLLERS.....	EA	1
17	13	PAOZZ	3110-00-183-9946	96906	MS19081-58	.BEARING, ROLLER.....	EA	1
L7	14	XAOZZ		60038	18520	.CUP.TAPERED, ROLLER BEARING.....	EA	1
17	15	XAOZZ		05748	37375SA	.HUB ASSEMBLY, LH.....	EA	1
17	15	XAOZZ		05748	31379SA	.HUB ASSEMBLY, RH.....	EA	1
17	16	PAOZZ	5306-00-732-8294	05748	37377	.BOLT LH WHEEL	EA	5
17	16	XBOZZ		05748	37380	.BOLT, RH WHEEL.....	EA	5
17	17	PAOZZ	3110-00-100-0532	60038	18520	.CUP, TAPERED, ROLLER BEARING.....	EA	1
17	18	PAOZZ	3110-00-183-9946	96906	MS19015-8	.BEARING, ROLLER, HUB.....	EA	1
17	19	XBOZZ	3110-00-100-3526	40038	18590	.CONE AND ROLLERS.....	EA	1
17	20	XB0ZZ		96906	MS51001-30	.SEAL, PLAIN ENCASED, GREASE.....	EA	1
17	21	XADZZ		99024	71-100	.COLLAR	EA	2
17	22	PAOZZ	5310-00-768-0318	96906	MS151967-14	.NUT, PLAIN, HEXAGON, BRACKET TO FRAME	EA	4
17	23	PADZZ		96906	MS35338-48	.WASHER, LOCK, BRACKET TO FRAME.....	EA	4
17	24	XBOZZ		97403	13206E8842-2	.WASHER, BEVEL, TOP TO FRAME	EA	4
17	25	PAOZZ	5305-00-042-6417	96906	MS90725-113	.SCREW, CAP, HEXAGON BRACKET TO FRAME	EA	4
17	26	PBFZU	2530-00-119-9874	99024	L2-36-10-1	.AXLE ASSEMBLY	EA	1
17	27	PAOZZ	5310-00-655-9544	96906	MS35690-604	.NUT	EA	2
17	28	XBOZZ	5310-00-261-7340	16906	MS35338-8	.WASHERLOCK, TOP AND BOTTOM BRACKET	EA	2
17	29	XAOZZ		99024	72-823	.TOP, LH.....	EA	1
17	30	XBOZZ		05748	37575	.SCREW, CAP, HEXAGON, TOP AND BOTTON BRACKET.....	EA	2
17	31	XAOZZ		99024	72-801	.BRACKET, AXLE LH.....	EA	1
17	32	XAOZZ		99024	69-030	.BLOCK, SPACER INSERT AXLE BRACKET...	EA	1
17	33	XAOZZ		05748	37361	.AXLE, SPINDLE.....	EA	1
17	34	XAOZZ		99024	68-643	.CLIP, SPRING	EA	2
17	35	PAOZZ	5310-00-655-9544	96906	MS35690-604	.NUT/PLAIN, HEXAGON, BRACKET TO BLOCK	EA	2
17	36	XBOZZ	5310-00-261-7340	96906	MS35338-8	.WASHER, LOCK TOP AND BOTTOM BRACKET	EA	2
17	38	XB0ZZ		05748	35757	.SCREW, CAP.HEXAGON, BRACKET TO BLOCK	EA	2

SECTION II

TM 5-4320-242-24P

(1) ILLUSTRATION		(2)	(3)	(4)	(5)	(6)	(7)	(8)
(a) FIG NO.	(b) ITEM NO.	SMR CODE	NATIONAL STOCK NUMBER	FSCM	PART NUMBER	DESCRIPTION USABLE ON CODE	U/M	QTY INC IN UNIT
17	39	XAOZZ		99024	72-802	RACKET, AXLE, RH.....	EA	1
17	40	XAOZZ		99024	69-030	BLOCK, SPACER INSERT, AXLE BRACKET...	EA	1
17	41	XAOLZ		99024	69-500	SPRING, RH.....	EA	1
17	42	XAFZZ		99024	69-499	SPRING, LH	EA	1
17	43	XBOZZ	2610-00-269-9586	96906	MS35388-9	TIRE	EA	2
17	44	PAOZZ	2610-00-269-7332	96906	MS35392-1	INNER TUBE PNEUMATIC	EA	2
50								

PMN
1OF X42CEN4164R
NATIONAL STOCK NUMBER AND PART NUMBER INDEX

STOCK NUMBER	FIG.	ITEM	STOCK NUMBER	FIG.	ITEM
4730-00-010-3867	10	4	5306-00-225-8503	13	46
5205-00-042-6417	2	13	5305-00-225-9081	14	10
5335-00-042-6417	13	2	5330-00-239-8383	10	28
5300-00-042-6417	17	25	5310-00-261-7340	17	28
5105-00-044-4153	16	5	5310-00-261-7340	17	36
5310-00-045-3294	7	28	5305-00-269-2805	9	10
5305-00-051-0857	15	3	5305-00-269-3213	1	3
5305-00-051-0827	15	9	5305-00-269-3213	2	5
6140-00-059-3528	4	9	5305-00-269-3213	2	10
5330-00-066-2494	1	4	5305-00-269-3213	3	3
5350-00-068-0501	13	14	5305-00-269-3213	10	16
5305-00-068-0502	4	5	5305-00-269-3214	10	7
5305-00-068-0502	6	3	5305-00-269-3214	10	11
5305-00-068-0502	13	14	5305-00-269-3214	12	5
5305-00-068-0502	16	3	5305-00-269-3215	11	5
5305-00-068-0502	16	39	5305-00-269-3215	11	13
4720-00-071-7967	3	8	5305-00-269-3215	12	4
3120-00-077-0596	13	37	5305-30-269-3215	12	14
5306-00-078-0164	13	24	5305-00-269-3215	12	19
4320-00-078-2521	13	42	2610-00-269-7332	17	44
4320-00-080-4105	13	45	2610-00-269-9586	17	43
5310-00-080-6004	10	9	5315-00-298-1481	10	31
5310-00-080-6004	10	13	3655-00-304-7479	14	17
5310-00-080-6004	10	18	5307-00-363-0720	10	2
5310-00-080-6004	16	16	5307-00-360-0720	11	10
5310-00-080-6004	16	25	5307-00-360-0720	11	19
5365-00-081-1376	13	29	5307-00-363-0720	12	11
5330-00-089-3911	13	39	5365-00-377-6983	13	41
5330-00-089-3912	11	15	5330-00-400-3569	9	7
5330-03-089-3912	11	18	2990-00-407-6393	1	6
5330-00-089-3912	12	7	5310-00-407-9566	13	9
5330-00-089-3912	12	10	5310-00-407-9566	13	25
5330-00-089-3912	12	16	5310-00-407-9566	14	9
5330-00-089-3912	12	20	5340-00-420-9693	16	10
5330-00-089-3912	14	25	5330-00-542-1090	14	21
4730-00-098-5160	14	20	4820-00-563-8018	10	1
3110-00-100-0532	17	17	6685-00-566-8856	6	14
3110-00-100-3526	17	19	4720-00-570-7788	6	7
3110-00-100-6155	14	12	5975-00-577-8825	16	12
2530-00-119-9874	17	26	5310-00-582-5965	4	6
4320-00-122-9988	13	10	5310-00-582-5965	6	2
4320-00-122-9990	13	26	5310-00-582-5965	13	15
6685-00-130-3947	6	11	5310-00-582-5965	16	2
4730-00-132-4625	3	20	5310-00-582-5965	16	30
6140-00-134-0828	4	2	5930-00-615-9376	7	16
4730-00-136-1119	3	12	5315-00-616-5514	10	24
4730-00-136-1119	10	3	5310-00-627-6128	2	3
5930-00-138-4997	7	14	5310-00-627-6128	2	4
5365-00-138-8146	13	45	5310-00-627-6128	2	8
4320-00-138-8147	13	42	5310-00-627-6128	2	9
4320-00-138-8149	14	1	4320-00-629-4388	13	38
4320-00-138-8161	7	1	5310-00-637-9541	1	2
4730-00-138-8164	14	3	5310-00-637-9541	2	2
4730-00-138-8169	14	5	5310-20-637-9541	2	7
4720-00-138-8190	13	6	5310-00-637-9541	3	2
2990-00-138-8263	7	25	5310-00-637-9541	9	9
2910-00-138-8274	3	15	5310-00-637-9541	10	8
5305-00-139-0215	8	8	5310-00-637-9541	10	12
5315-00-139-7249	16	29	5310-00-637-9541	10	17
5306-00-139-7307	15	13	5310-00-637-9541	10	20
5307-00-140-8149	10	2	5310-00-637-9541	11	4
5307-00-140-8149	13	22	5310-00-637-9541	11	9
2910-00-141-9758	3	16	5310-00-637-9541	11	12
4730-00-145-6231	3	21	5310-00-637-9541	11	17
3120-00-146-2533	13	27	5310-00-637-9541	12	3
3110-00-156-4856	13	33	5310-00-637-9541	12	9
5330-00-161-0758	7	13	5310-00-637-9541	12	13
5935-00-167-7775	7	11	5310-00-637-9541	12	18
3110-00-183-9946	17	13	5310-00-637-9541	13	44
3110-00-183-9946	17	18	5310-00-637-9541	14	23
5935-00-184-6707	7	10	5310-00-637-9541	16	19
4730-00-188-1855	14	6	5310-00-637-9541	16	1
9905-00-202-3639	16	40	5310-00-637-9541	16	23
9905-00-205-2795	16	4	5310-00-637-9541	17	9
5305-00-207-8253	16	14	4820-00-639-9224	3	13
5310-03-209-5116	2	14	4730-00-640-6156	12	1
5310-00-209-5116	13	3	4730-00-640-6188	11	2
5305-00-225-3838	16	15	5930-00-455-1522	7	15
5305-00-225-3838	16	24	5310-00-655-9544	17	27
5306-00-225-8503	13	8	5310-00-655-9544	17	35

PMN 1OF X42CEN4164R
NATIONAL STOCK NUMBER AND PART NUMBER INDEX

STOCK NUMBER	FIG.	ITEM	STOCK NUMBER	FIG.	ITEM
5330-00-656-7460	11	24	5310-00-811-3494	7	4
5315-00-456-7464	16	31	5935-00-813-4364	7	12
5315-00-656-7464	16	45	5310-00-820-6653	15	2
4730-00-656-7488	10	27	5310-00-820-6653	15	5
4820-00-656-7536	10	23	5310-00-820-6653	15	8
5330-00-684-7851	3	17	5310-00-820-6653	16	33
5330-00-690-8672	10	5	5310-00-823-8803	16	34
5305-00-717-5460	17	4	5310-00-834-0732	15	11
4930-00-718-9956	8	13	2540-00-835-9039	16	7
5305-00-723-9385	10	22	4730-00-840-5347	12	6
5305-00-723-9387	10	33	4730-00-840-5348	11	6
5305-00-724-5910	15	6	5315-00-842-3044	16	8
5307-00-725-0296	10	6	4820-00-845-1096	13	19
5305-00-727-3804	16	35	4820-00-845-1096	14	4
5310-00-732-0558	1	1	5310-00-851-2677	11	22
5310-00-732-0558	2	1	5310-00-877-5797	6	12
5310-00-732-0558	2	6	5310-00-877-5797	7	7
5310-00-732-0558	3	1	5310-00-877-5797	7	19
5310-00-732-0558	11	3	5310-00-889-2606	4	1
5310-00-732-0558	11	8	5310-00-889-2606	16	9
5310-00-732-0558	11	11	5305-00-889-2999	7	8
5310-00-732-0558	11	16	5310-00-891-1751	9	8
5310-00-732-0558	11	16	5310-00-891-1751	9	8
5310-00-732-0558	12	2	2910-00-893-2592	3	18
5310-00-732-0558	12	8	4930-00-896-7073	8	12
5310-00-732-0558	12	12	5330-00-899-4509	11	7
5310-00-732-0558	12	17	2910-00-905-9792	3	22
5310-00-732-0558	13	23	4320-00-918-4185	13	40
5310-00-732-0558	13	43	3110-00-934-7945	13	31
5310-00-732-0558	14	22	6685-00-934-7953	6	17
5310-00-732-0558	16	22	5310-00-934-9758	7	26
5330-00-732-7749	11	24	6140-00-935-2585	4	4
5330-00-732-7750	11	25	6140-00-935-2586	4	3
5330-00-732-7750	11	27	4320-00-936-3810	13	4
5306-00-732-8294	17	16	6620-00-938-8212	6	16
5310-00-737-1106	17	8	5305-00-942-2196	10	19
5330-00-737-1109	17	7	5305-00-942-2196	16	20
5310-00-761-6882	6	1	4820-00-950-7687	8	1
5310-00-761-6882	16	1	6680-00-956-2598	6	15
5310-00-761-6882	16	37	5305-00-984-6194	7	3
5310-00-763-8920	13	11	5305-00-984-6194	7	5
5310-00-763-8920	15	1	5305-00-984-6210	7	27
5310-00-763-8920	15	4	4820-00-986-1981	8	3
5310-00-763-8920	15	7	4730-00-986-1982	8	4
5310-00-768-0318	2	11	4730-00-986-1982	12	21
5310-00-768-0318	13	1	5340-00-986-1987	8	5
5310-00-768-0318	15	12	5305-00-989-7435	7	20
5310-00-768-0318	17	22	5305-00-995-3444	6	13
5310-00-769-6520	17	9	4730-00-004-5105	10	4
5310-00-769-6521	17	11	4820-01-004-8464	10	1
5315-00-772-9446	14	15	4730-01-005-2402	10	3
6680-00-775-5779	3	19	4730-01-005-2402	14	7
5330-00-779-2357	8	7	5330-01-005-4123	7	18
5330-00-785-0693	8	11	5340-01-005-4124	7	21
3040-00-800-4621	10	25	5310-01-007-6896	8	2
3040-00-800-4621	10	25	2540-01-021-0782	16	46
5365-00-803-9978	13	32	5995-01-032-5572	16	11
5365-00-803-9978	13	34	5340-01-038-3806	7	17
5310-00-811-3494	7	2	5340-01-045-5832	7	22

FSCM	PART NUMBER	FIGURE NO.	ITEM NO.	FSCM	PART NUMBER	FIGURE NO.	ITEM NO.
25567	AP12-04	13	20	81718	C72R8	8	13
03933	A1917	14	20	81718	C738	8	12
03933	A2628	14	17	81718	C74A	8	3
03933	A3232	14	15	81718	C75A	8	11
03933	A3467	14	18	81718	C987	11	26
03933	A3636	14	19	81718	D17A	8	10
03993	A39318-8	14	13	81718	D18M	8	14
03933	A4646	14	14	81718	D19M	8	15
03933	R563	14	11	25567	O15361	10	1
025567	C0606	10	2	81718	E2A	8	17
25567	C0606	11	10	38508	H1254	6	17
25567	C0606	11	19	81718	H252S	8	9
25567	C0606	12	11	81718	H366M	11	21
25567	C0606	10	6	81718	H4218M	11	20
81718	C252A	11	28	81718	H477A	11	23
76364	C35759	9	1	81718	H508H	11	24
76364	C35779	11	1	81718	H643M	8	8
				81718	H664R3	8	16

NATIONAL STOCK NUMBER AND PART NUMBER INDEX

FSCM	PART NUMBER	FIGURE NO.	ITEM NO.	FSCM	PART NUMBER	FIGURE NO.	ITEM NO.
81718	H665B	B	4	96906	MS35338-46	12	3
81718	H666RB	B	6	96906	MS35338-46	12	9
81718	H667M	8	7	96906	MS35338-46	12	13
81718	H669M	8	5	96906	MS3533, -46	12	18
81718	H778M	11	25	96906	MS35338-46	13	44
81718	H778M	11	27	96906	MS35338-46	14	23
81718B	H959M	8	2	96906	MS35338-46	16	14
80343	J5146C	6	10	96906	M535338-46	16	19
99024	L2-36-10-1	17	26	96906	MS35338-46	16	23
81349	MIL-D-2940	6	11	96906	M535338-46	17	8
81349	MIL-H-13444	3	8	96906	MS35338-48	2	12
81349	MIL-H-13444	6	6	96906	MS35338-48	16	6
81349	MIL-H-13444	6	7	96906	MS35338-48	17	23
96906	MS150461	14	12	96906	MS35338-50	15	2
96906	MS16624-137	13	32	96906	MS35338-50	15	5
96906	MS16624-137	13	34	96906	MS35338-50	15	8
96906	MS16631-315	13	29	96906	MS3533'50	16	33
96906	MS519081-58	17	13	96906	MS535338-8	17	28
96906	MS19081-58	17	18	96906	MS35338-8	17	36
96906	MS21044N08	7	2	96906	MS35387-1	16	4
96906	MS21044N08	7	4	96906	M535387-2	16	40
96906	MS21044N3	6	12	96906	MS35388-9	17	43
96906	MS210443	7	1	96906	MS35392-8	17	44
96906	MS21044N3	7	19	96906	M535425-42	4	1
96906	MS24541-2	6	16	96906	MS35425-42	16	9
96906	MS24665-283	16	8	96906	MS35643-1	3	17
96906	MS24665357	10	31	96906	M535644-1	3	18
96906	NS.25083-286	7	6	96906	NS35645-1	3	16
96906	MS27023-17	12	6	96906	MS35649-202	1	26
96906	MS27027-17	11	6	96906	NS356901002	16	32
96906	MS27028-17	12	1	96906	M535690-502	14	8
96906	MS27029-17	11	2	96906	MS35690-602	16	18
96906	KS27030-9	11	7	96906	NS35690-604	17	27
96906	MS27144#1	7	11	96906	MS35690-604	17	35
96906	MS271443	7	13	96906	MS35691-22	9	8
96906	NS27183'14	10	9	96906	M535691-33	15	11
96906	MS27183-14	10	13	96906	MS35691-49	11	22
96906	MS27183-14	10	18	96906	MS35756-6	10	24
96906	MS27183-14	16	16	96906	MS35763-819	13	24
96906	MS27183-14	16	25	96906	MS35916-1	6	11
96906	MS27183-21	16	34	96906	MS35932-2	3	13
96906	MS3102R18-IS	7	12	96906	M551001-19	13	30
96906	M535058-30	7	15	96906	M551001-198	13	36
96906	MS35059-21	7	16	96906	M551001-30	17	20
96906	M535206-217	7	8	96906	MS51071-9	6	5
96906	MS35206-246	7	3	96906	M55108B6-1	3	22
96906	MS35206-246	7	5	96906	MS51335-2	16	7
96906	NS35206-263	7	27	96906	MS51963-63	10	33
96906	M535207-264	7	20	96906	MS51963-65	10	22
96906	M535207-266	6	13	96906	MS51967-14	2	11
96906	MS35307-308	13	14	96906	M551967-14	13	1
96906	NS35307-359	17	4	96906	M551967-14	15	12
96906	MS3533-35	2	3	96906	MS51967-14	17	22
96906	MS35335-35	2	4	96906	MS51967-2	6	1
96906	MS35335-35	2	8	96906	M551967-2	16	1
96906	MS35335-35	2	9	96906	M551961-2	16	37
96906	MS35335-37	2	14	96906	M551967-20	13	11
96906	MS35335-37	13	3	96906	MS51967-20	11	1
96906	MS35338-43	7	28	96906	MS51967-20	15	4
96906	MS35338-44	4	6	96906	MS51967-20	15	7
96906	HS35338-44	6	2	96906	M51967-8	1	1
96906	MS35338-44	13	15	96906	M551967-8	2	1
96906	MS35338-44	16	2	96906	MS51967-8	2	6
96906	MS35338-44	16	38	96906	MS51967-8	3	1
96906	NS35338-45	13	9	96906	MS51967-8	11	3
96906	MS35338-45	13	25	96906	MS51967-8	11	8
96906	MS35338-45	14	9	96906	MS51967-8	11	11
96906	M535338-46	1	2	96906	MS51967-8	11	16
96906	M53533846	2	2	96906	MS51967-8	12	2
96906	M535338-46	2	7	96906	M551967-8	12	8
96906	MS35338-46	3	2	96906	MS51967-8	12	12
96906	MS35338-46	9	9	96906	MSS196-8	12	17
96906	MS35338-46	10	8	96906	MS551967-8	13	23
96906	MS35338-46	10	12	96906	MS51967-8	13	43
96906	MS35338-46	10	17	96906	M551967-8	14	22
96906	MS35338-46	10	20	96906	NS51967-8	16	13
96906	MS35338-46	11	4	96906	MS51967-8	16	22
96906	MS35338-46	11	9	96906	MS75047-I	4	9
96906	MS35338-46	11	12	96906	MS90725-109	16	5
96906	MS3533846	11	17	96906	MS90725-113	2	13

NATIONAL STOCK NUMBER AND PART NUMBER INDEX

FSCM	PART NUMBER	FIGURE NO.	ITEM NO.	FSCM	PART NUMBER	FIGURE NO.	ITEM NO.
96906	MS90725-113	13	2	97403	13213E9819	16	36
96906	HS90725-113	17	25	97403	13213E9821-1	16	46
96906	NS90725-162	15	6	97403	13213E9822	3	4
96906	NS90725-16	15	3	97403	13213E9822-2	3	5
96906	MS90725-164	15	9	97403	13213E9823	3	6
96906	HS90725-165	16	35	97403	13213E9823-2	3	7
96906	HS90725-36	14	10	97403	13213E9825	3	21
96906	NS90725-39	13	B	97403	13213E9826	3	19
96906	MS90725-39	13	46	97403	13213E9827	2	15
96906	HS90725-4	16	15	97403	13213E9829	4	7
96906	NS90725-4	16	24	97403	13213E9831	13	28
96906	MS90725-5	13	14	97403	13213E9832	4	2
96906	MS90725-6	4	5	97403	13213E9834	13	26
96906	HS90725-6	6	3	97403	13213E9835	13	35
96906	NS90725-6	13	14	97403	13213E9836	13	33
96906	5S90725-6	16	3	97403	13213E9837	13	10
96906	NS90725-6	16	39	97403	13213E9838	13	31
96906	HS90725-60	10	19	97403	13213E9840	13	27
96906	NS9072560	16	20	97403	13213E9843-1	16	29
96906	HS90725-62	1	3	97403	13213E9844	13	40
96906	HS9072562	2	5	97403	13213E9845	15	14
96906	YS90725-62	2	10	97403	13213E9846	15	15
96906	NS90725-62	3	3	97403	13213E9847	7	24
96906	HS90725-62	10	16	97403	13213E9848	7	1
96906	NS90725-64	10	7	97403	13213E9849-1	15	13
96906	NS90725-64	10	11	97403	13213E9850	7	9
96906	HS907264	12	5	97403	13213E9851	7	23
96906	NS90725-65	11	5	97403	13213E9852-1	7	17
96906	MS9072565	11	13	97403	13213E9852-2	7	22
96906	MS90725-65	12	4	97403	13213E9853	7	25
96906	NS90725-65	12	14	97403	13213E9854-1	4	4
96906	MS90725-65	12	19	97403	13213E9854-2	4	3
96906	NS90726-62	9	10	97403	13213E9856	7	31
96906	HS9350-10	6	4	97403	13213E9859	5	1
25567	N0206	10	26	97403	13213E9861	5	2
25567	P04	3	12	97403	13213E9863	7	13
25567	P04	10	3	97403	13213E9864	4	8
25567	P06	10	4	97403	13214E6103	1	6
25567	P24	13	21	97403	13216E8178	2	16
.61463	P282	14	2	97403	13216E8179	7	14
25567	1537	16	31	05748	15000	10	4
25567	S1537	16	45	05748	15675	16	12
25567	52041	16	28	73680	162	10	28
25567	52041	16	42	60038	18520	17	14
25567	S2046	3	20	60038	18520	17	17
25567	S2047	3	11	60038	18590	17	12
25567	S2048	3	9	60038	18590	17	19
25567	S2049	3	10	25567	2X	13	41
25567	5708	17	1	76364	2093N	9	18
25567	S884	16	27	76364	22106N	11	28
25567	S884	16	41	25567	22768	16	21
80204	USAS-804.1	6	14-	76364	23258N	9	11
05748	01487	13	17	76364	26408	9	12
05748	01488	13	16	05748	280065A	16	11
05748	02417	10	2	76364	2855N	9	4
05748	02417	13	22	76364	3042N	9	13
05748	03207	13	21	76364	31112H	9	2
05748	03217	10	3	76364	3158L	11	22
.05748	03217	14	7	76364	3673N	9	6
05748	03226	14	5	05748	37361	17	33
05748	03262	14	6	05748	373755A	17	15
25567	11741	13	38	05748	37377	17	16
25567	11742	13	47	05748	373795A	17	15
25567	11742GA	13	39	05748	37380	17	16
25567	11744	13	45	05748	37396SA	3	15
25567	11745G	13	13	05748	374265A	13	4
25567	11746	13	17	05748	37437	11	14
25567	11747	13	42	05748	374585A	14	1
25567	11749	13	4	05748	374595A	10	1
25567	11751	13	16	05748	37461	12	21
25567	11847	13	37	05748	37466	16	17
25567	11889	13	12	05748	37501	7	18
25567	11890	16	17	05748	37502	7	21
25567	11891	16	26	05748	37517	11	29
25567	13053	3	14	05748	37518	7	30
25567	13056	15	10	05748	37519	7	29
25567	13)85	16	10	05748	37527	13	7
97403	13206E0642	1	4	05748	37528	13	5
97403	13206E8842-2	17	24	05748	37529	13	6
97403	13213E9818	16	47	05748	37531	14	3

NATIONAL STOCK NUMBER AND PART NUMBER INDEX

FSCM	PART NUMBER	FIGURE NO.	ITEM NO.	FSCM	PART NUMBER	FIGURE NO.	ITEM NO.
05748	37575	17	30	25567	5372GC	11	15
05748	37575	17	38	25567	5372GC	11	18
05748	37578	1	5	25567	5372GC	12	7
05748	37683	13	13	25567	5372GC	12	10
05748	37716	13	47	25567	5372GC	12	16
05748	37717	13	12	25567	5372GC	12	20
05748	38063	13	20	25567	5372GC	14	25
05748	38101	10	3D	25567	5453A	14	24
05748	38128	10	34	25567	6010	16	43
05748	38141	10	29	25567	6031	11	29
05748	38159	10	35	25567	6270	10	15
05748	38212	14	16	76364	65107U	9	7
05784	38294	13	18	79470	6660	13	19
05748	38316	16	21	79470	6660	14	4
05748	38390	13	42	76364	6675N	11	24
05748	38419	13	45	76364	6686N	9	17
25567	3847	10	27	81718	676	8	1
25567	3848	10	25	99024	68-643	17	34
25567	3855	10	10	99024	69-030	17	32
25567	3855	10	14	99024	69-030	17	40
25567	3856	10	32	99024	69-499	17	42
81349	4A084-3	2	17	99024	69-500	17	41
76364	40192N	11	23	99024	71-100	17	21
76364	4227L	11	20	76364	71072N	9	5
76364	4253E	9	14	99024	72-801	17	31
76364	437N	9	15	99024	72-802	17	39
76364	438N	9	16	99024	72-823	17	29
76364	469N	11	21	76364	7231N4	11	27
25567	5190G	14	21	00000	7371106	17	10
25567	5228	16	30	19207	7371106	17	8
25567	5228	16	44	19207	7371109	17	7
19207	5232404	17	2	00000	7387807	17	3
19207	5232405	17	2	76364	76112	9	3
25567	5360	10	35	19207	7696520	17	9
25567	5362	10	30	19207	7696521	17	11
25567	5363	10	21	00000	7735821	17	6
25567	5364	10	23	25567	8514	12	15
25567	5365	10	34	81718	87TF4	11	1
25567	5371GB	10	5				

By Order of the Secretary of the Army:

Official:

ROBERT M JOYCE

Brigadier General, United States. Army
The Adjutant General

E C MEYER

General, United States Army
Chief of Staff

DISTRIBUTION:

To be distributed in accordance with DA Form 12-25A, Organizational Maintenance requirements for Equipment, Miscellaneous: Petroleum Distribution.

★ U S GOVERNMENT PRINTING OFFICE : 1990 0 - 262-912 (30552)

The Metric System and Equivalents

Linear Measure

1 centimeter = 10 millimeters = .39 inch
 1 decimeter = 10 centimeters = 3.94 inches
 1 meter = 10 decimeters = 39.37 inches
 1 dekameter = 10 meters = 32.8 feet
 1 hectometer = 10 dekameters = 328.08 feet
 1 kilometer = 10 hectometers = 3,280.8 feet

Weights

1 centigram = 10 milligrams = .15 grain
 1 decigram = 10 centigrams = 1.54 grains
 1 gram = 10 decigrams = .035 ounce
 1 dekagram = 10 grams = .35 ounce
 1 hectogram = 10 dekagrams = 3.52 ounces
 1 kilogram = 10 hectograms = 2.2 pounds
 1 quintal = 100 kilograms = 220.46 pounds
 1 metric ton = 10 quintals = 1.1 short tons

Liquid Measure

1 centiliter = 10 milliliters = .34 fl. ounce
 1 deciliter = 10 centiliters = 3.38 fl. ounces
 1 liter = 10 deciliters = 33.81 fl. ounces
 1 dekaliter = 10 liters = 2.64 gallons
 1 hectoliter = 10 dekaliters = 26.42 gallons
 1 kiloliter = 10 hectoliters = 264.18 gallons

Square Measure

1 sq. centimeter = 100 sq. millimeters = .155 sq. inch
 1 sq. decimeter = 100 sq. centimeters = 15.5 sq. inches
 1 sq. meter (centare) = 100 sq. decimeters = 10.76 sq. feet
 1 sq. dekameter (are) = 100 sq. meters = 1,076.4 sq. feet
 1 sq. hectometer (hectare) = 100 sq. dekameters = 2.47 acres
 1 sq. kilometer = 100 sq. hectometers = .386 sq. mile

Cubic Measure

1 cu. centimeter = 1000 cu. millimeters = .06 cu. inch
 1 cu. decimeter = 1000 cu. centimeters = 61.02 cu. inches
 1 cu. meter = 1000 cu. decimeters = 35.31 cu. feet

Approximate Conversion Factors

To change	To	Multiply by	To change	To	Multiply by
inches	centimeters	2.540	ounce-inches	newton-meters	.007062
feet	meters	.305	centimeters	inches	.394
yards	meters	.914	meters	feet	3.280
miles	kilometers	1.609	meters	yards	1.094
square inches	square centimeters	6.451	kilometers	miles	.621
square feet	square meters	.093	square centimeters	square inches	.155
square yards	square meters	.836	square meters	square feet	10.764
square miles	square kilometers	2.590	square meters	square yards	1.196
acres	square hectometers	.405	square kilometers	square miles	.386
cubic feet	cubic meters	.028	square hectometers	acres	2.471
cubic yards	cubic meters	.765	cubic meters	cubic feet	35.315
fluid ounces	milliliters	29.573	cubic meters	cubic yards	1.308
pints	liters	.473	milliliters	fluid ounces	.034
quarts	liters	.946	liters	pints	2.113
gallons	liters	3.785	liters	quarts	1.057
ounces	grams	28.349	liters	gallons	.264
pounds	kilograms	.454	grams	ounces	.035
short tons	metric tons	.907	kilograms	pounds	2.205
pound-feet	newton-meters	1.356	metric tons	short tons	1.102
pound-inches	newton-meters	.11296			

Temperature (Exact)

°F	Fahrenheit temperature	5/9 (after subtracting 32)	Celsius temperature	°C
----	------------------------	----------------------------	---------------------	----

RECOMMENDED CHANGES TO EQUIPMENT TECHNICAL PUBLICATIONS



THEN... JOT DOWN THE
DOPE ABOUT IT ON THIS
FORM, CAREFULLY TEAR IT
OUT, FOLD IT AND DROP IT
IN THE MAIL!

SOMETHING WRONG WITH THIS PUBLICATION?

FROM: (PRINT YOUR UNIT'S COMPLETE ADDRESS)

DATE SENT

PUBLICATION NUMBER

PUBLICATION DATE

PUBLICATION TITLE

BE EXACT... PIN-POINT WHERE IT IS

PAGE
NO.

PARA-
GRAPH

FIGURE
NO.

TABLE
NO.

IN THIS SPACE TELL WHAT IS WRONG
AND WHAT SHOULD BE DONE ABOUT IT:

TEAR ALONG PERFORATED LINE

PRINTED NAME, GRADE OR TITLE, AND TELEPHONE NUMBER

SIGN HERE:

DA FORM 2028-2
1 JUL 79

PREVIOUS EDITIONS
• ARE OBSOLETE.

P.S.—IF YOUR OUTFIT WANTS TO KNOW ABOUT YOUR
RECOMMENDATION MAKE A CARBON COPY OF THIS
AND GIVE IT TO YOUR HEADQUARTERS.

This fine document...

Was brought to you by me:



[Liberated Manuals -- free army and government manuals](#)

Why do I do it? I am tired of sleazy CD-ROM sellers, who take publicly available information, slap “watermarks” and other junk on it, and sell it. Those masters of search engine manipulation make sure that their sites that sell free information, come up first in search engines. They did not create it... They did not even scan it... Why should they get your money? Why are not letting you give those free manuals to your friends?

I am setting this document FREE. This document was made by the US Government and is NOT protected by Copyright. Feel free to share, republish, sell and so on.

I am not asking you for donations, fees or handouts. If you can, please provide a link to liberatedmanuals.com, so that free manuals come up first in search engines:

<A HREF=<http://www.liberatedmanuals.com/>>Free Military and Government Manuals

- Sincerely
Igor Chudov
<http://igor.chudov.com/>
- [Chicago Machinery Movers](#)