

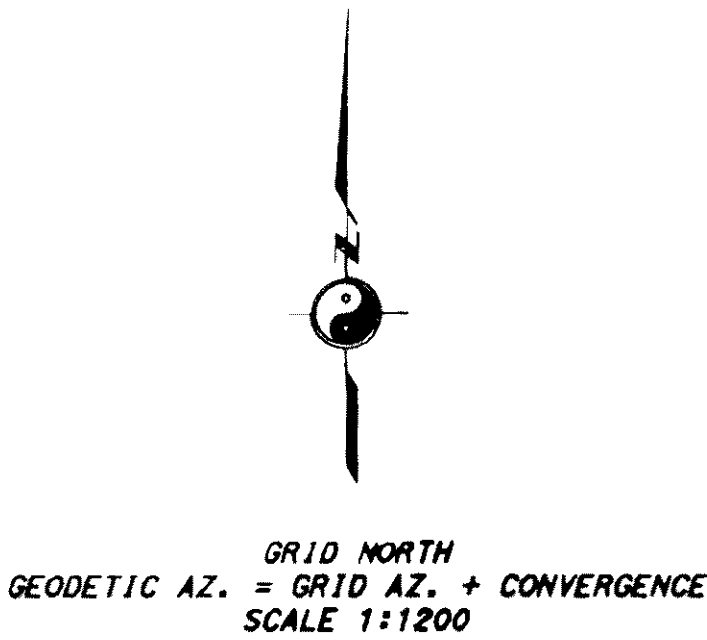
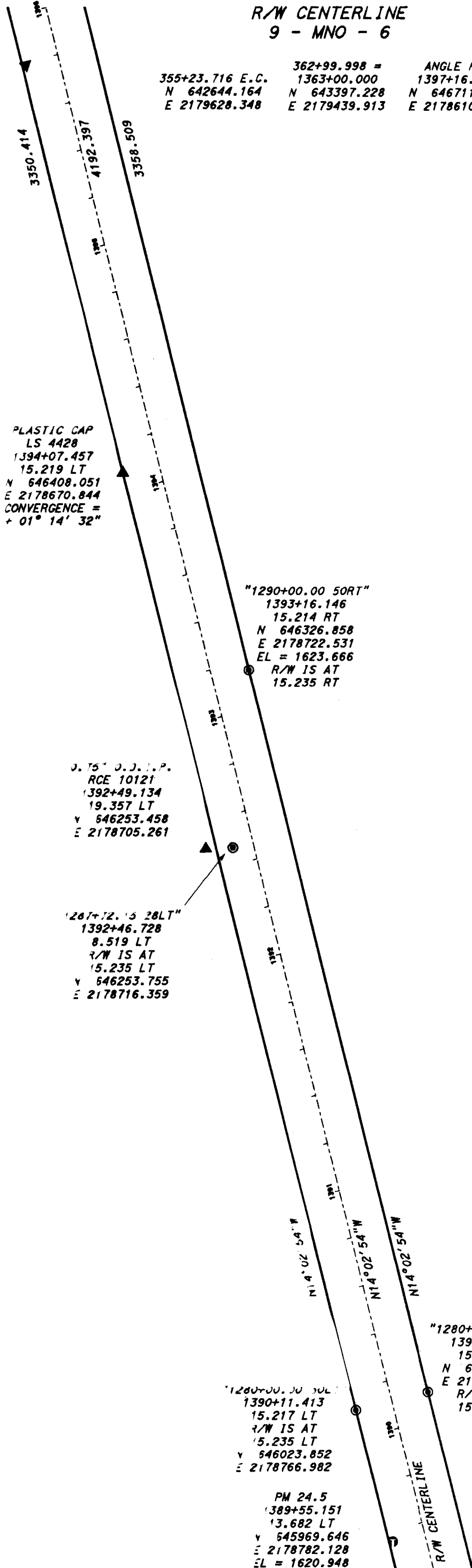
RECORD OF SURVEY No. 35 - 17

T. 2 S., R. 32 E.,
M.D.M.
SECTION
5

R/W CENTERLINE
9 - MNO - 6

1395+78.925
13.733 LT
N 646574.751
E 2178630.663

355+23.716 E.C.	362+99.998 =	ANGLE PT.
N 642644.164	1363+00.000	1397+16.116
E 2179628.348	N 643397.228	N 646711.172
	E 2179439.913	E 2178610.684



LEGEND

- SET 0.75" x 30" REBAR WITH AN 1.5" DIA. ALUMINUM CAP, MARKED "CALTRANS" AND AS NOTED.
- ▲ PROJECT CONTROL MONUMENT, "CALTRANS" ALUMINUM CAP ON 0.75" x 30" REBAR, MARKED AS SHOWN.
- ⊙ FOUND HORIZONTAL OR VERTICAL CONTROL MONUMENT WITH PUBLISHED VALUES.
- FOUND 6" x 6" SO. TYPE "C" CONCRETE HWY. RIGHT-OF WAY MONUMENT.
- ◆ FOUND PUBLIC LAND NET CORNER, AS NOTED.
- ① FOUND, CALIFORNIA DIVISION OF HIGHWAYS BATHEY CAP AND T-BAR, MARKED AS SHOWN.
- FOUND, CALIFORNIA DIVISION OF HIGHWAYS BRASS CAP IN CONCRETE, MARKED AS SHOWN.
- ⊙ FOUND, CALIFORNIA DEPT. OF TRANSPORTATION BRASS CAP IN CONCRETE, MARKED AS SHOWN.
- ▲ FOUND MONUMENT, MARKED AS SHOWN.
- ⊙ CALCULATED POINT, NOTHING FOUND OR SET.