

# PARCEL MAP 1433

A RESUBDIVISION OF A PORTION OF  
FRED G. BRUNS PROPERTY AS SHOWN  
ON BLOCK "B", MONTCLAIR ACRES

SCALE: 1"=20' APRIL 1974

JAMES T. HILL  
LICENCED LAND SURVEYOR  
OAKLAND, CALIFORNIA

## OWNER:

J.W. SILVEIRA  
499 EMBARCADERO  
OAKLAND, CALIFORNIA

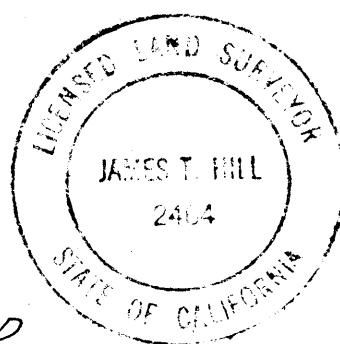
72-44445

BASIS OF BEARINGS  
MONUMENTS ON BULLARD DRIVE

## SURVEYOR'S CERTIFICATE

THIS MAP WAS PREPARED BY ME OR UNDER MY  
DIRECTION AND IS BASED UPON A FIELD SURVEY IN  
CONFORMANCE WITH THE REQUIREMENTS OF THE  
SUBDIVISION MAP ACT AT THE REQUEST OF  
J.W. SILVEIRA. I HEREBY CERTIFY THAT IT  
CONFORMS TO THE APPROVED TENTATIVE MAP AND  
THE CONDITIONS OF APPROVAL THEREOF; THAT  
ALL APPLICABLE STATE LAWS AND LOCAL  
ORDINANCES HAVE BEEN COMPLIED WITH.

James T. Hill  
JAMES T. HILL L.L.S. 2464

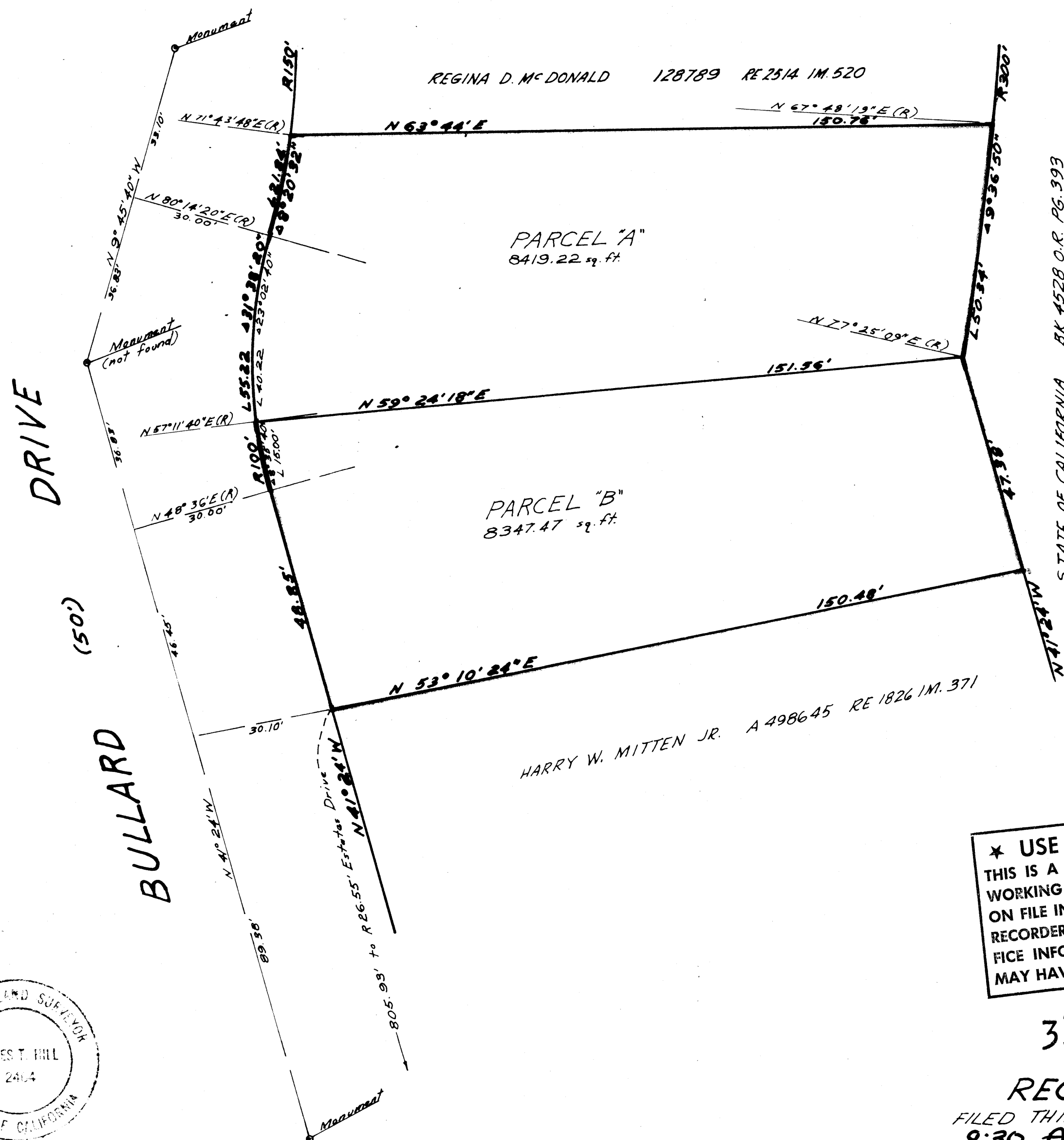


## CITY ENGINEER'S CERTIFICATE

THIS MAP HAS BEEN EXAMINED THIS 1 DAY OF MAY 1974 FOR  
CONFORMANCE WITH THE REQUIREMENTS OF SECTION 11575  
OF THE SUBDIVISION MAP ACT.

John E. Votaw  
CITY ENGINEER RE. 7609  
CITY OF OAKLAND

ASSESSOR'S BOOK 4-P-15 PAGE 15



★ USE WITH CAUTION ★  
THIS IS A PUBLIC WORKS DEPARTMENT  
WORKING COPY OF AN OFFICIAL MAP  
ON FILE IN THE OFFICE OF THE COUNTY  
RECORDER, COUNTY OF ALAMEDA. OF-  
FICE INFORMATION OR CALCULATIONS  
MAY HAVE BEEN ADDED HEREON.

33D 40D

## RECORDER'S CERTIFICATE

FILED THIS 2<sup>ND</sup> DAY OF MAY, 1974, AT  
9:30 A. M. IN BOOK 83 OF PARCEL MAPS  
AT PAGE 65 AT THE REQUEST OF  
JAMES T. HILL. JACK G. BLUE

74-54803  
\$5.00

COUNTY RECORDER  
BY Donna J. Belardi  
DEPUTY COUNTY RECORDER

SHEET 1 OF 1 SHEET

Map Bk 83 Pg 65 FILED 5-2-74 83/65